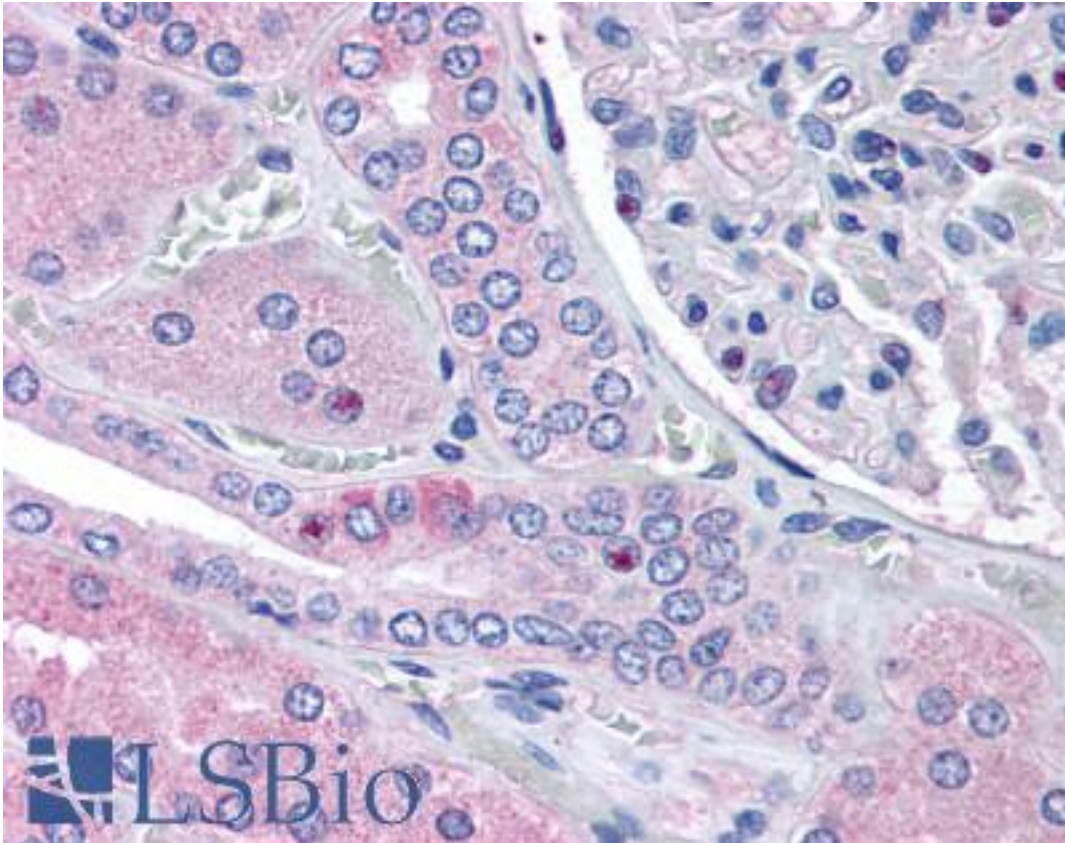


RNF213 Goat anti-Human Polyclonal (C-Terminus) Antibody - LS-B1755 - LSBio	
<b>CatalogID:</b>	LS-B1755
<b>Validation:</b>	This antibody replaces catalog number LS-C47584. It has been validated for use in the following assays: IHC.
<b>Target:</b>	ring finger protein 213 (RNF213)
<b>Synonyms:</b>	RNF213 Antibody, C17orf27 Antibody, KIAA1618 Antibody, KIAA1554 Antibody, Mysterin Antibody, MYSTR Antibody, ALO17 Antibody, Moyamoya disease 2 Antibody, MYMY2 Antibody, NET57 Antibody, Ring finger protein 213 Antibody
<b>Host</b>	RNF213 antibody was produced in Goat
<b>Clonality:</b>	Polyclonal
<b>Immunogen Species:</b>	RNF213 antibody was raised against Human
<b>Antigen Type:</b>	Synthetic peptide
<b>Immunogen:</b>	RNF213 antibody was raised against synthetic peptide C-KTAAVLKWNRE from the C-terminus of human RNF213 (NP_065965.4). Percent identity by BLAST analysis: Human, Gorilla (100%); Gibbon (82%).
<b>Specificity:</b>	Human RNF213.
<b>Epitope:</b>	C-Terminus
<b>Reactivity:</b>	Human, Gorilla
<b>Purification:</b>	Immunoaffinity purified
<b>Presentation:</b>	Tris-buffered saline, pH 7.3, 0.5% BSA, 0.02% sodium azide
<b>Recommended Storage:</b>	Store at -20°C. Minimize freezing and thawing.
<b>Usage Summary:</b>	Immunohistochemistry: LS-B1755 was validated for use in immunohistochemistry on a panel of 21 formalin-fixed, paraffin-embedded (FFPE) human tissues after heat induced antigen retrieval in pH 6.0 citrate buffer. After incubation with the primary antibody, slides were incubated with biotinylated secondary antibody, followed by alkaline phosphatase-streptavidin and chromogen. The stained slides were evaluated by a pathologist to confirm staining specificity. The optimal working concentration for LS-B1755 was determined to be 2.5 ug/ml.
<b>Uses:</b>	IHC - Paraffin (2.5 µg/ml), ELISA (1:4000) (Optimal dilution to be determined by the researcher)
<b>Size:</b>	50 µg
<b>Concentration:</b>	0.5 mg/ml

**Immunohistochemistry Image:**



Anti-RNF213 antibody IHC of human kidney. Immunohistochemistry of formalin-fixed, paraffin-embedded tissue after heat-induced antigen retrieval. Antibody LS-B1755 concentration 5 ug/ml.

**Requested From:**

Japan

Laboratory Reagent For In Vitro Research Use Only

Not for resale without prior written consent from LifeSpan BioSciences, Inc.

Created on 9/23/2014

© 2014 LifeSpan BioSciences