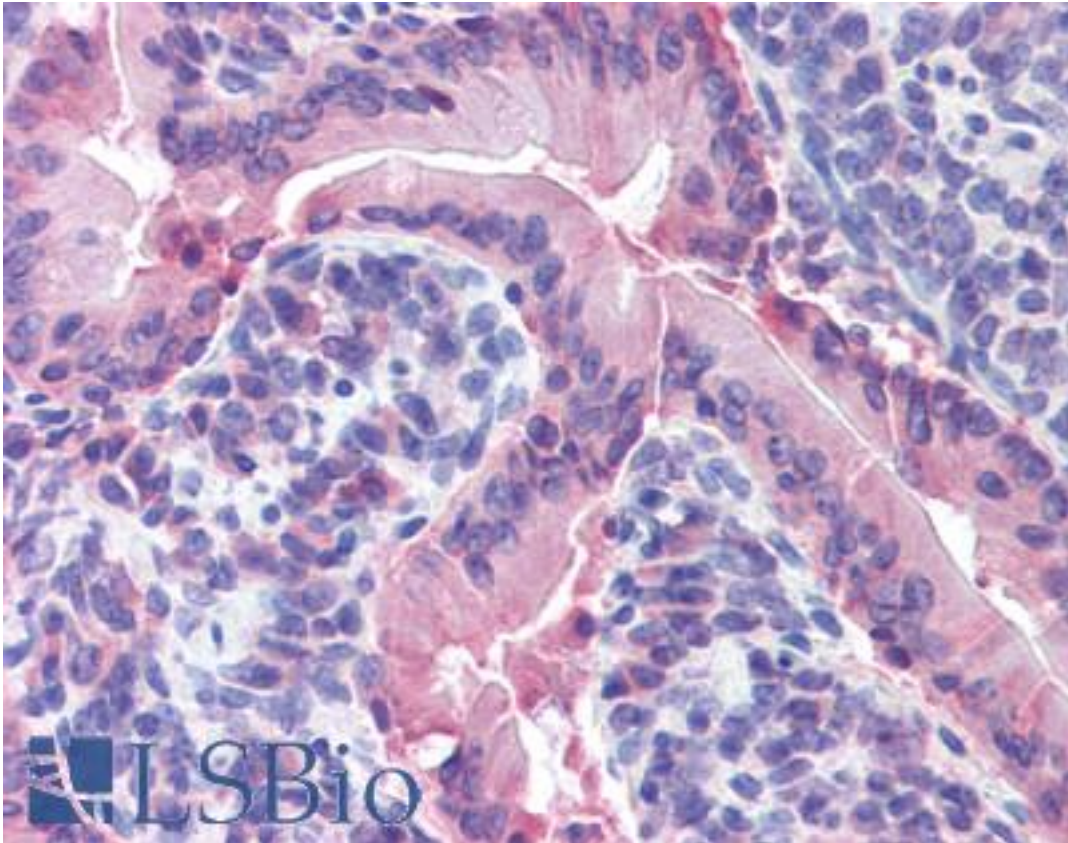


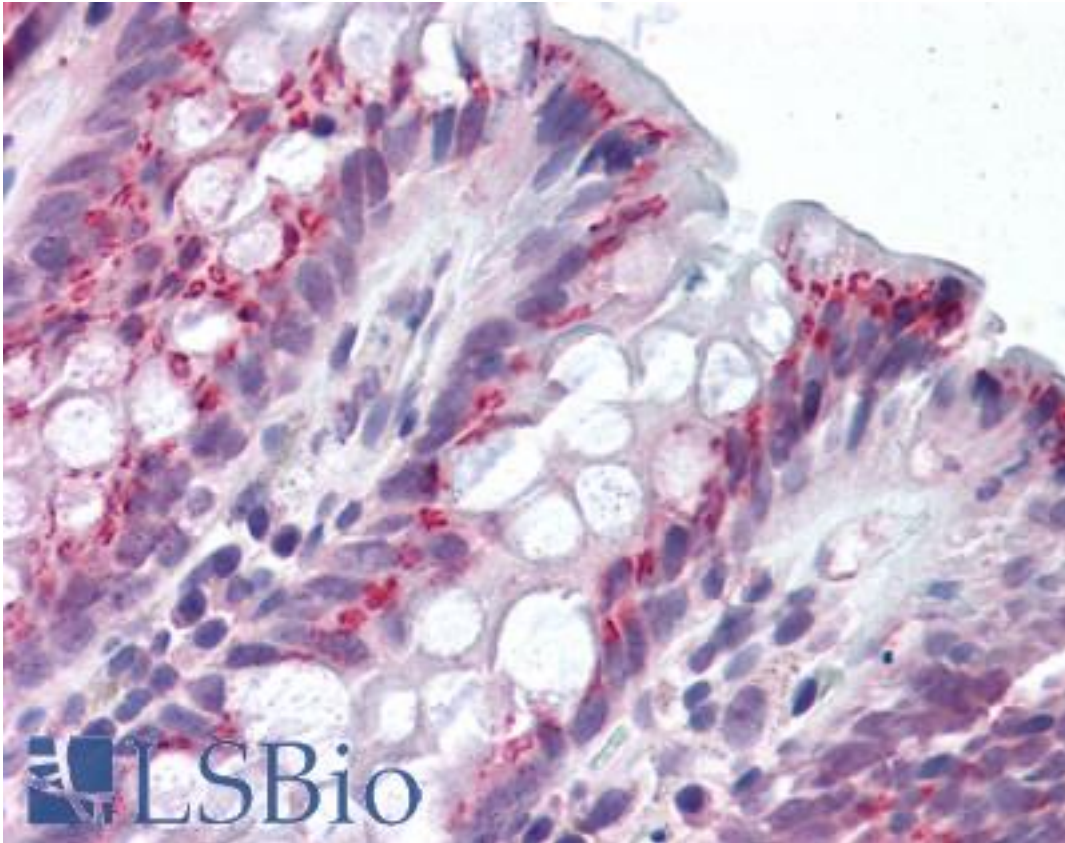
IDO1 / IDO Goat anti-Human Polyclonal (Internal) Antibody - LS-B1746 - LSBio	
CatalogID:	LS-B1746
Validation:	This antibody replaces catalog number LS-C47565. It has been validated for use in the following assays: IHC.
Target:	indoleamine 2,3-dioxygenase 1 (IDO1)
Synonyms:	IDO1 Antibody, IDO Antibody, Indole 2,3-dioxygenase Antibody, Indolamine 2,3-dioxygenase Antibody, IDO-1 Antibody, INDO Antibody, Indoleamine 2,3-dioxygenase Antibody, Indoleamine 2,3-dioxygenase 1 Antibody
Host	IDO1 antibody was produced in Goat
Clonality:	Polyclonal
Immunogen Species:	IDO1 / IDO antibody was raised against Human
Antigen Type:	Synthetic peptide
Immunogen:	IDO1 / IDO antibody was raised against synthetic peptide CVLANWKKKDPNK from an internal region of human IDO1 / IDO (NP_002155.1). Percent identity by BLAST analysis: Human, Gorilla, Monkey, Marmoset (100%); Gibbon, Mouse, Rat, Sheep, Dog, Bovine, Panda (92%); Bat, Elephant, Horse, Rabbit, Pig, Opossum, Platypus (85%).
Specificity:	Human IDO1 / IDO.
Epitope:	Internal
Reactivity:	Human, Gorilla, Monkey, Mouse
Predicted Reactivity:	Gibbon, Rat, Bovine, Dog, Sheep
Purification:	Immunoaffinity purified
Presentation:	Tris-buffered saline, pH 7.3, 0.5% BSA, 0.02% sodium azide
Recommended Storage:	Store at -20°C. Minimize freezing and thawing.
Usage Summary:	Immunohistochemistry: LS-B1746 was validated for use in immunohistochemistry on a panel of 21 formalin-fixed, paraffin-embedded (FFPE) human tissues and a panel of mouse tissues after heat induced antigen retrieval in pH 6.0 citrate buffer. After incubation with the primary antibody, slides were incubated with biotinylated secondary antibody, followed by alkaline phosphatase-streptavidin and chromogen. The stained slides were evaluated by a pathologist to confirm staining specificity. The optimal working concentration for LS-B1746 was determined to be 2.5 ug/ml.
Uses:	IHC - Paraffin (2.5 µg/ml), ELISA (1:8000) (Optimal dilution to be determined by the researcher)
Size:	50 µg
Concentration:	0.5 mg/ml

Immunohistochemistry Image:



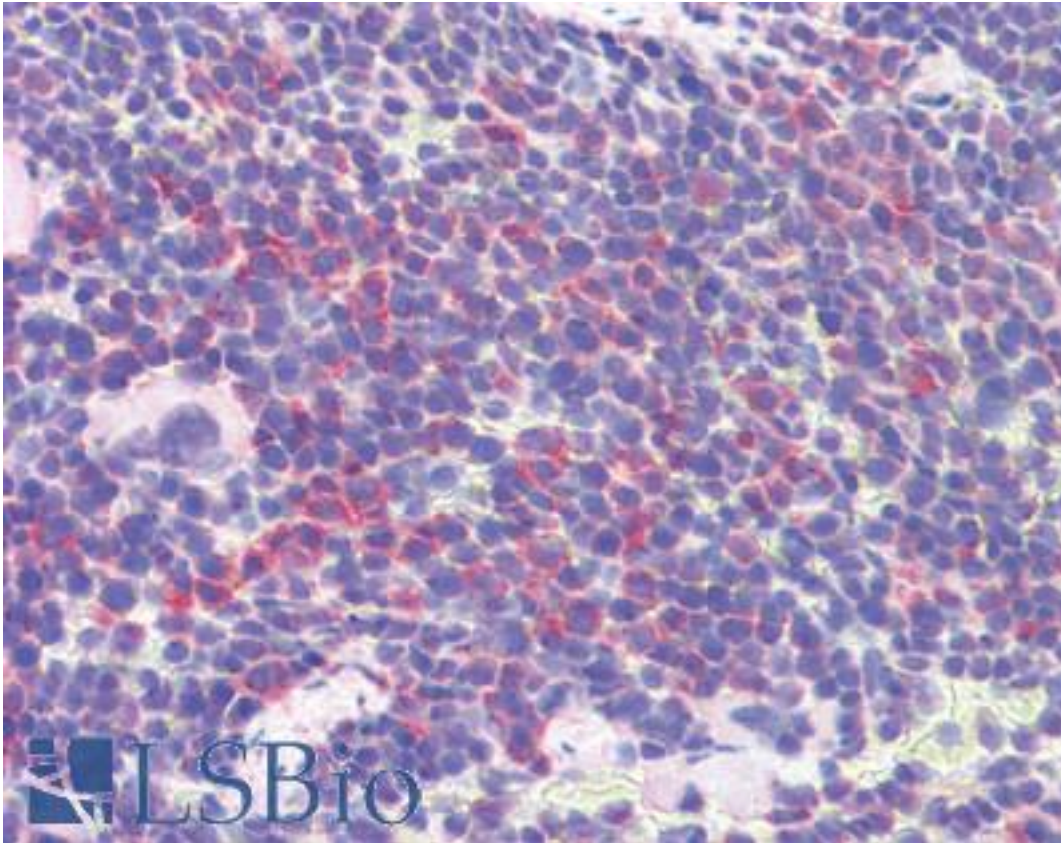
Anti-IDO1 / IDO antibody IHC of mouse small intestine. Immunohistochemistry of formalin-fixed, paraffin-embedded tissue after heat-induced antigen retrieval. Antibody LS-B1746 concentration 2.5 ug/ml.

Immunohistochemistry Image:



Anti-IDO1 / IDO antibody IHC of human colon. Immunohistochemistry of formalin-fixed, paraffin-embedded tissue after heat-induced antigen retrieval. Antibody LS-B1746 concentration 5 ug/ml.

Immunohistochemistry Image:



Anti-IDO1 / IDO antibody IHC of mouse spleen. Immunohistochemistry of formalin-fixed, paraffin-embedded tissue after heat-induced antigen retrieval. Antibody LS-B1746 concentration 2.5 ug/ml.

Requested From:

Japan

Laboratory Reagent For In Vitro Research Use Only

Not for resale without prior written consent from LifeSpan BioSciences, Inc.

Created on 9/23/2014

© 2014 LifeSpan BioSciences