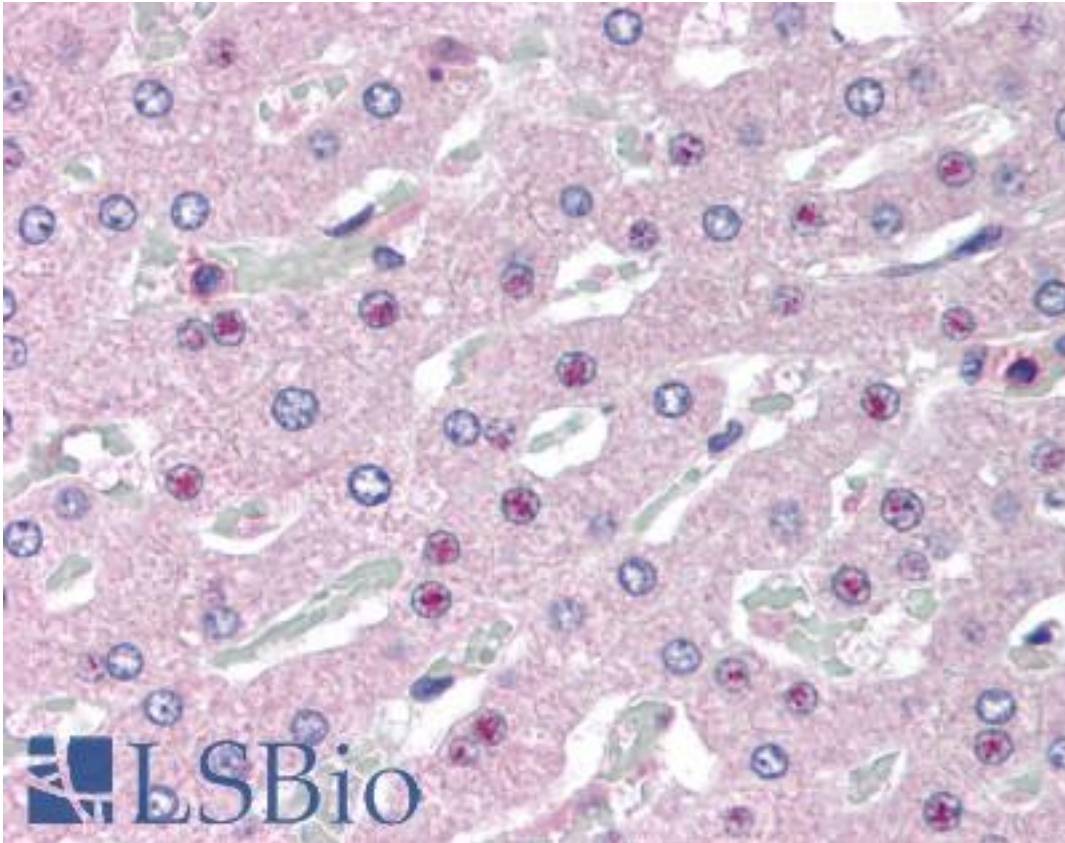


SLC25A47 / C14orf68 Goat anti-Human Polyclonal (Internal) Antibody - LS-B1743 - LSBio	
CatalogID:	LS-B1743
Validation:	This antibody replaces catalog number LS-C47582. It has been validated for use in the following assays: IHC.
Target:	solute carrier family 25, member 47 (SLC25A47)
Synonyms:	SLC25A47 Antibody, HDMCP Antibody, HMFN1655 Antibody, C14orf68 Antibody
Host	SLC25A47 antibody was produced in Goat
Clonality:	Polyclonal
Immunogen Species:	SLC25A47 / C14orf68 antibody was raised against Human
Antigen Type:	Synthetic peptide
Immunogen:	SLC25A47 / C14orf68 antibody was raised against synthetic peptide C-KSRLQADGQGQRR from an internal region of human SLC25A47 / C14orf68 (NP_997000.2). Percent identity by BLAST analysis: Human, Gorilla, Monkey, Panda, Rabbit, Pig, Dog (100%); Gibbon, Marmoset, Mouse, Rat, Horse, Hamster, Elephant (92%).
Specificity:	Human SLC25A47 / C14orf68.
Epitope:	Internal
Reactivity:	Human, Gorilla, Dog, Pig, Rabbit
Predicted Reactivity:	Gibbon, Monkey, Mouse, Rat, Hamster, Horse
Purification:	Immunoaffinity purified
Presentation:	Tris-buffered saline, pH 7.3, 0.5% BSA, 0.02% sodium azide
Recommended Storage:	Store at -20°C. Minimize freezing and thawing.
Usage Summary:	Immunohistochemistry: LS-B1743 was validated for use in immunohistochemistry on a panel of 21 formalin-fixed, paraffin-embedded (FFPE) human tissues after heat induced antigen retrieval in pH 6.0 citrate buffer. After incubation with the primary antibody, slides were incubated with biotinylated secondary antibody, followed by alkaline phosphatase-streptavidin and chromogen. The stained slides were evaluated by a pathologist to confirm staining specificity. The optimal working concentration for LS-B1743 was determined to be 2.5 ug/ml.
Uses:	IHC - Paraffin (2.5 µg/ml), ELISA (1:32000) (Optimal dilution to be determined by the researcher)
Size:	50 µg
Concentration:	0.5 mg/ml

Immunohistochemistry Image:



Anti-SLC25A47 / C14orf68 antibody IHC of human liver. Immunohistochemistry of formalin-fixed, paraffin-embedded tissue after heat-induced antigen retrieval. Antibody LS-B1743 concentration 5 ug/ml.

Requested From:

Japan

Laboratory Reagent For In Vitro Research Use Only

Not for resale without prior written consent from LifeSpan BioSciences, Inc.

Created on 9/23/2014

© 2014 LifeSpan BioSciences