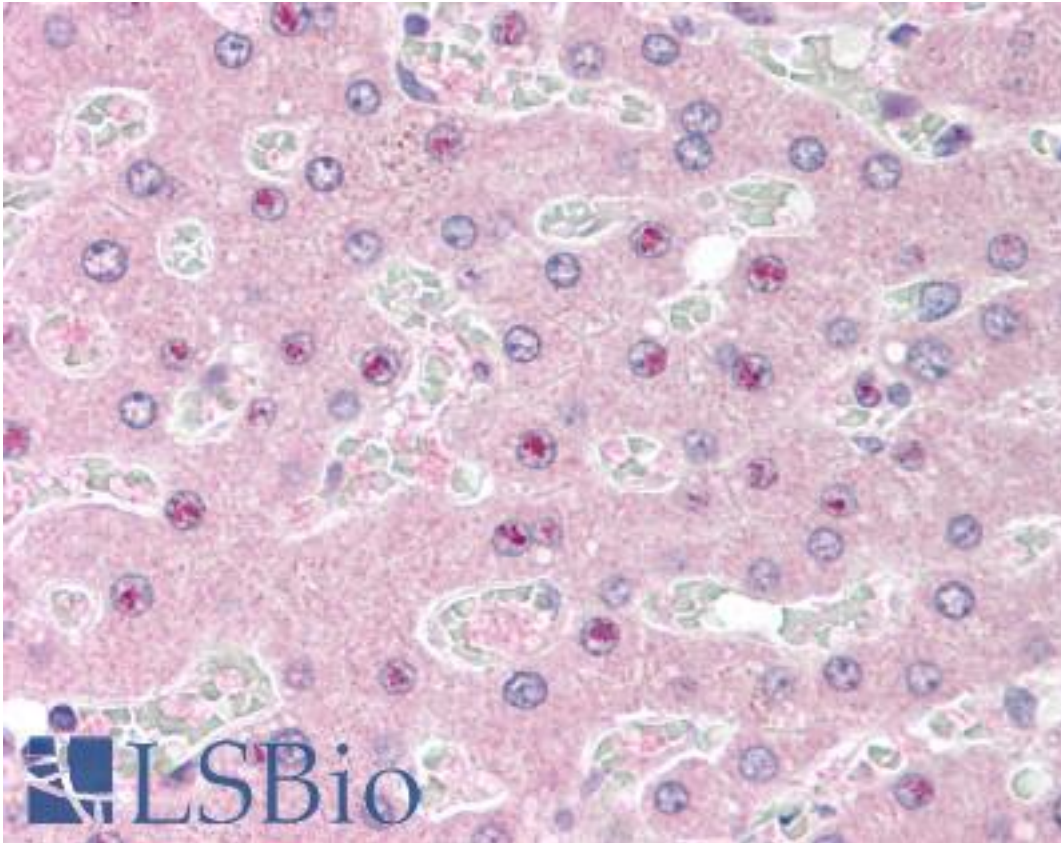


SLC25A47 / C14orf68 Goat anti-Human Polyclonal (Internal) Antibody - LS-B1742 - LSBio	
<b>CatalogID:</b>	LS-B1742
<b>Validation:</b>	This antibody replaces catalog number LS-C47581. It has been validated for use in the following assays: IHC.
<b>Target:</b>	solute carrier family 25, member 47 (SLC25A47)
<b>Synonyms:</b>	SLC25A47 Antibody, HDMCP Antibody, HMFN1655 Antibody, C14orf68 Antibody
<b>Host</b>	SLC25A47 antibody was produced in Goat
<b>Clonality:</b>	Polyclonal
<b>Immunogen Species:</b>	SLC25A47 / C14orf68 antibody was raised against Human
<b>Antigen Type:</b>	Synthetic peptide
<b>Immunogen:</b>	SLC25A47 / C14orf68 antibody was raised against synthetic peptide C-RYGNPDAKPTKAD from an internal region of human SLC25A47 / C14orf68 (NP_997000.2). Percent identity with other species by BLAST analysis: Human (100%), Gorilla (85%), Gibbon (85%), Marmoset (85%), Mouse (85%).
<b>Specificity:</b>	Human SLC25A47 / C14orf68.
<b>Epitope:</b>	Internal
<b>Reactivity:</b>	Human
<b>Purification:</b>	Immunoaffinity purified
<b>Presentation:</b>	Tris-buffered saline, pH 7.3, 0.5% BSA, 0.02% sodium azide
<b>Recommended Storage:</b>	Store at -20°C. Minimize freezing and thawing.
<b>Usage Summary:</b>	Immunohistochemistry: LS-B1742 was validated for use in immunohistochemistry on a panel of 21 formalin-fixed, paraffin-embedded (FFPE) human tissues after heat induced antigen retrieval in pH 6.0 citrate buffer. After incubation with the primary antibody, slides were incubated with biotinylated secondary antibody, followed by alkaline phosphatase-streptavidin and chromogen. The stained slides were evaluated by a pathologist to confirm staining specificity. The optimal working concentration for LS-B1742 was determined to be 2.5 ug/ml.
<b>Uses:</b>	IHC - Paraffin (2.5 µg/ml), ELISA (1:16000) (Optimal dilution to be determined by the researcher)
<b>Size:</b>	50 µg
<b>Concentration:</b>	0.5 mg/ml

**Immunohistochemistry Image:**



Anti-SLC25A47 / C14orf68 antibody IHC of human liver. Immunohistochemistry of formalin-fixed, paraffin-embedded tissue after heat-induced antigen retrieval. Antibody LS-B1742 concentration 5 ug/ml.

**Requested From:**

Japan

Laboratory Reagent For In Vitro Research Use Only

Not for resale without prior written consent from LifeSpan BioSciences, Inc.

Created on 9/23/2014

© 2014 LifeSpan BioSciences