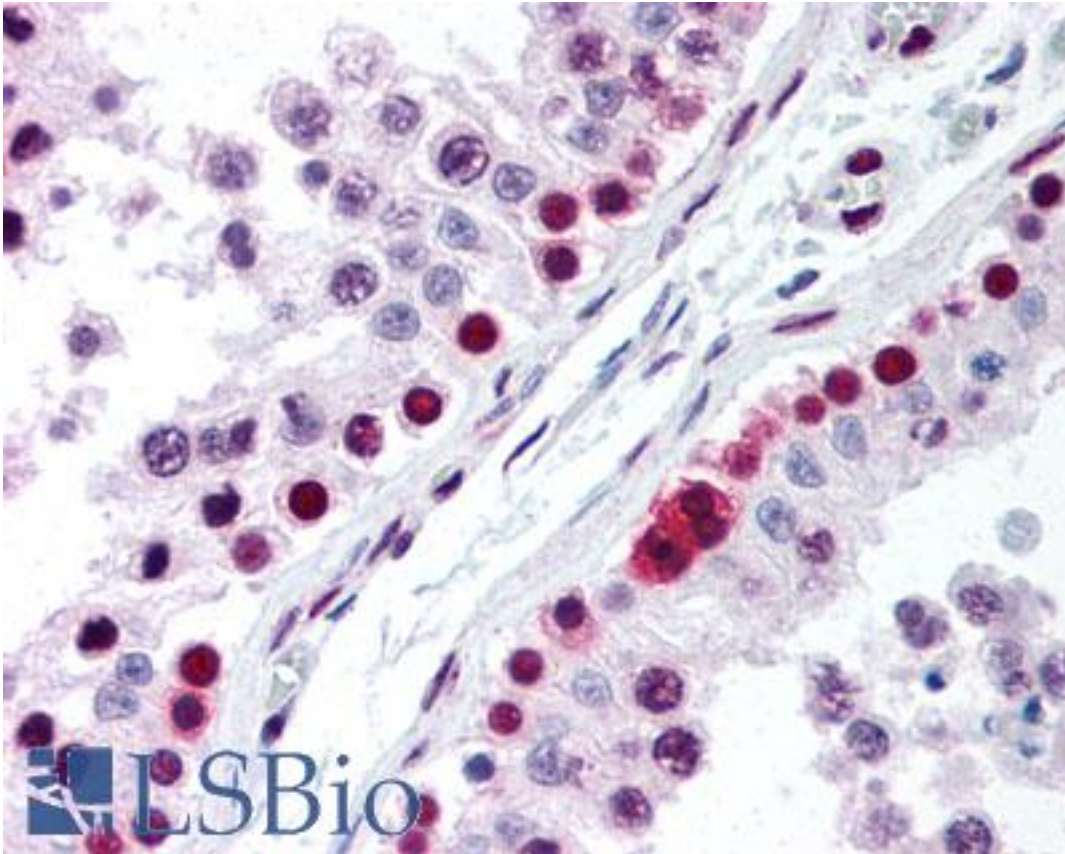


XRCC6 / Ku70 Mouse anti-Human Monoclonal (N-Terminus) (529) Antibody - LS-B1720 - LSBio	
CatalogID:	LS-B1720
Validation:	This antibody replaces catalog number LS-C20114. It has been validated for use in the following assays: IHC.
Target:	X-ray repair complementing defective repair in Chinese hamster cells 6 (XRCC6)
Synonyms:	XRCC6 Antibody, 5-dRP lyase Ku70 Antibody, 70 kDa subunit of Ku antigen Antibody, CTCBF Antibody, DNA repair protein XRCC6 Antibody, D22S671 Antibody, D22S731 Antibody, G22P1 Antibody, Ku autoantigen, 70kDa Antibody, Ku autoantigen p70 subunit Antibody, Thyroid-lupus autoantigen p70 Antibody, TLA A Antibody, CTC75 Antibody, KU70 Antibody, ML8 Antibody, Thyroid-lupus autoantigen Antibody
Host	XRCC6 antibody was produced in Mouse
Clonality:	Monoclonal
Isotype:	IgG
Clone Name:	529
Immunogen Species:	XRCC6 / Ku70 antibody was raised against Human
Immunogen:	XRCC6 / Ku70 antibody was raised against recombinant human XRCC6 / Ku70.
Specificity:	Recombinant antigen containing the amino terminal portion of human Ku70 protein
Epitope:	N-Terminus
Reactivity:	Human
Purification:	Protein G purified
Presentation:	PBS, pH 7.2. No preservatives added.
Recommended Storage:	+4°C or -20°C, Avoid repeated freezing and thawing.
Usage Summary:	Immunohistochemistry: LS-B1720 was validated for use in immunohistochemistry on a panel of 21 formalin-fixed, paraffin-embedded (FFPE) human tissues after heat induced antigen retrieval in pH 6.0 citrate buffer. After incubation with the primary antibody, slides were incubated with biotinylated secondary antibody, followed by alkaline phosphatase-streptavidin and chromogen. The stained slides were evaluated by a pathologist to confirm staining specificity. The optimal working concentration for LS-B1720 was determined to be 5 ug/ml.
Uses:	IHC - Paraffin (5 µg/ml), Western blot (Optimal dilution to be determined by the researcher)
Size:	50 µg
Concentration:	1 mg/ml

Immunohistochemistry Image:



Anti-XRCC6 / Ku70 antibody IHC of human testis. Immunohistochemistry of formalin-fixed, paraffin-embedded tissue after heat-induced antigen retrieval. Antibody LS-B1720 concentration 5 ug/ml.

Requested From:

Japan

Laboratory Reagent For In Vitro Research Use Only

Not for resale without prior written consent from LifeSpan BioSciences, Inc.

Created on 9/23/2014

© 2014 LifeSpan BioSciences