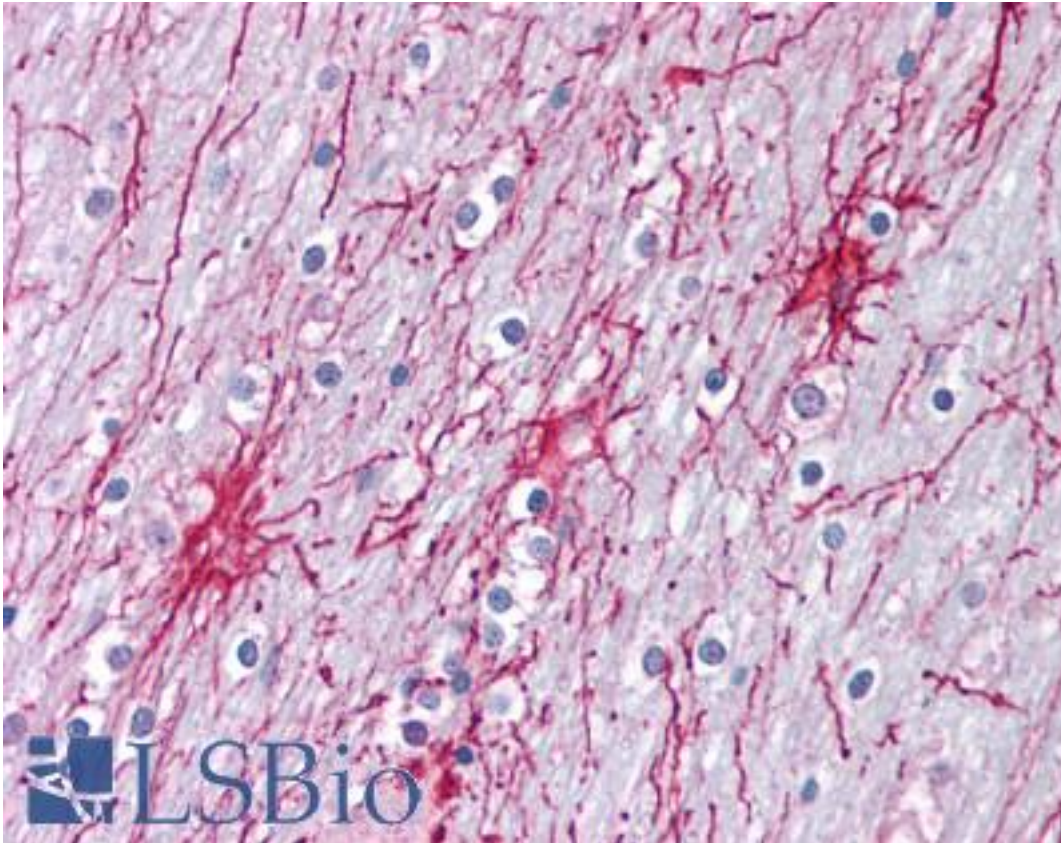


XPC Rabbit anti-Human Polyclonal Antibody - LS-B1717 - LSBio

|                             |   |
|-----------------------------|---|
| <b>CatalogID:</b>           | LS-B1717  |
| <b>Validation:</b>          | This antibody replaces catalog number LS-C20103. It has been validated for use in the following assays: IHC.  |
| <b>Target:</b>              | xeroderma pigmentosum, complementation group C (XPC)  |
| <b>Synonyms:</b>            | XPC Antibody, RAD4 Antibody, XPCC Antibody, p125 Antibody, XP3 Antibody   |
| <b>Host</b>                 | XPC antibody was produced in Rabbit   |
| <b>Clonality:</b>           | Polyclonal  |
| <b>Isotype:</b>             | IgG   |
| <b>Immunogen Species:</b>   | XPC antibody was raised against Human   |
| <b>Antigen Type:</b>        | Synthetic peptide   |
| <b>Immunogen:</b>           | XPC antibody was raised against synthetic peptide from human XPC.   |
| <b>Specificity:</b>         | Peptide conjugated to a carrier protein   |
| <b>Reactivity:</b>          | Human   |
| <b>Purification:</b>        | Affinity purified   |
| <b>Presentation:</b>        | PBS, pH 7.2. No preservative added.   |
| <b>Recommended Storage:</b> | Long term: -20°C; Short term: +4°C. Avoid repeat freeze-thaw cycles.  |
| <b>Usage Summary:</b>       | Immunohistochemistry: LS-B1717 was validated for use in immunohistochemistry on a panel of 21 formalin-fixed, paraffin-embedded (FFPE) human tissues after heat induced antigen retrieval in pH 6.0 citrate buffer. After incubation with the primary antibody, slides were incubated with biotinylated secondary antibody, followed by alkaline phosphatase-streptavidin and chromogen. The stained slides were evaluated by a pathologist to confirm staining specificity. The optimal working concentration for LS-B1717 was determined to be 5 ug/ml. |
| <b>Uses:</b>                | IHC - Paraffin (5 µg/ml), Western blot (Optimal dilution to be determined by the researcher)  |
| <b>Size:</b>                | 100 µl  |
| <b>Concentration:</b>       | 0.5 mg/ml   |

**Immunohistochemistry Image:**



Anti-XPC antibody IHC of human brain, cortex. Immunohistochemistry of formalin-fixed, paraffin-embedded tissue after heat-induced antigen retrieval. Antibody LS-B1717 concentration 5 ug/ml.

**Requested From:**

Japan

Laboratory Reagent For In Vitro Research Use Only

Not for resale without prior written consent from LifeSpan BioSciences, Inc.

Created on 9/23/2014

© 2014 LifeSpan BioSciences