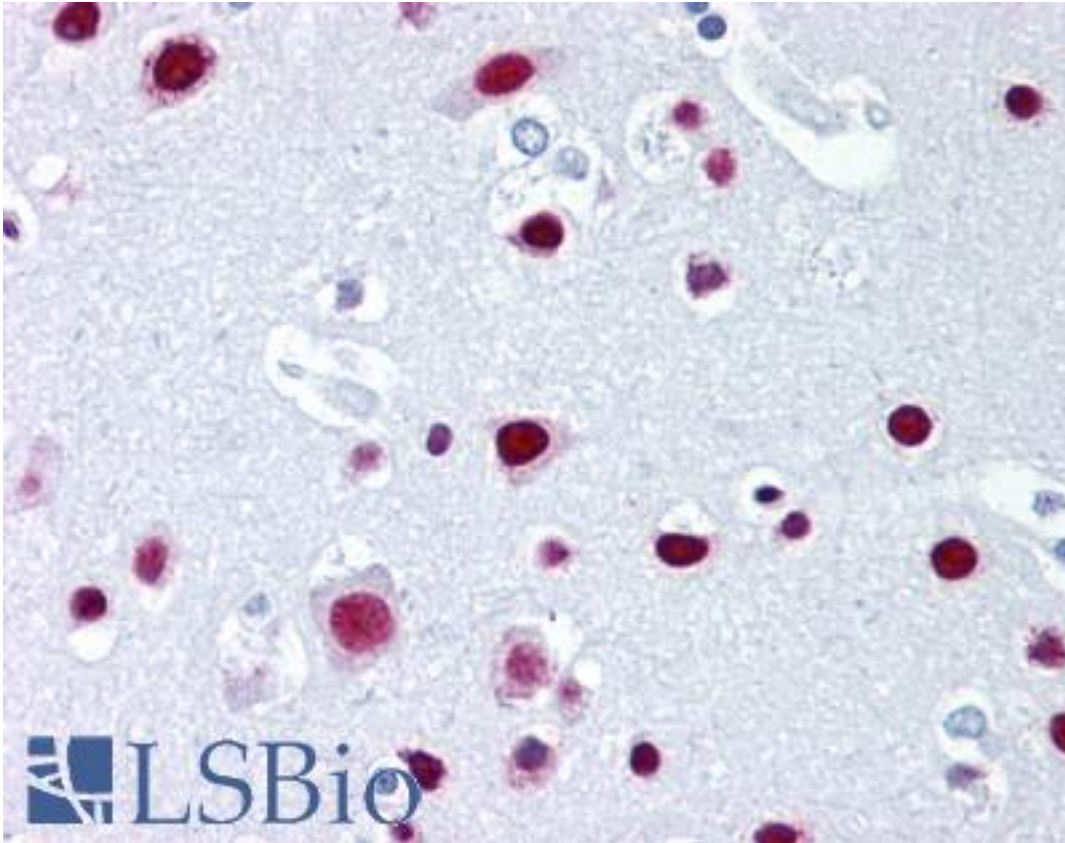


SAFB1 / SAFB Mouse anti-Human Monoclonal (aa345-357) (6F7) Antibody - LS-B1712 - LSBio	
<b>CatalogID:</b>	LS-B1712
<b>Validation:</b>	This antibody replaces catalog number LS-C20007. It has been validated for use in the following assays: IHC.
<b>Target:</b>	scaffold attachment factor B (SAFB)
<b>Synonyms:</b>	SAFB Antibody, HAP Antibody, HET Antibody, Scaffold attachment factor B Antibody, SAB-B1 Antibody, SAFB1 Antibody, SAF-B Antibody, SAF-B1 Antibody, Scaffold attachment factor B1 Antibody, Hsp27 ERE-TATA binding protein Antibody, HSP27 ERE-TATA-binding protein Antibody
<b>Host</b>	SAFB antibody was produced in Mouse
<b>Clonality:</b>	Monoclonal
<b>Isotype:</b>	IgG1
<b>Clone Name:</b>	6F7
<b>Immunogen Species:</b>	SAFB1 / SAFB antibody was raised against Human
<b>Antigen Type:</b>	Synthetic peptide
<b>Immunogen:</b>	SAFB1 / SAFB antibody was raised against synthetic peptide from human SAFB. Percent identity by BLAST analysis: Human, Gorilla, Orangutan, Gibbon, Monkey, Marmoset (100%).
<b>Specificity:</b>	A synthetic peptide corresponding to amino acids 345-357 (PEARDSKEDGRKF) of the human HET protein.
<b>Epitope:</b>	aa345-357
<b>Reactivity:</b>	Human, Gorilla, Orangutan, Gibbon, Monkey
<b>Purification:</b>	Protein G purified
<b>Presentation:</b>	PBS. Sourced in TCS.
<b>Recommended Storage:</b>	Short term 4°C, long term aliquot and store at -20°C, avoid freeze thaw cycles.
<b>Usage Summary:</b>	Immunohistochemistry: LS-B1712 was validated for use in immunohistochemistry on a panel of 21 formalin-fixed, paraffin-embedded (FFPE) human tissues after heat induced antigen retrieval in pH 6.0 citrate buffer. After incubation with the primary antibody, slides were incubated with biotinylated secondary antibody, followed by alkaline phosphatase-streptavidin and chromogen. The stained slides were evaluated by a pathologist to confirm staining specificity. The optimal working concentration for LS-B1712 was determined to be 5 ug/ml.
<b>Uses:</b>	IHC - Paraffin (5 µg/ml), Immunofluorescence, Western blot, Immunoprecipitation (Optimal dilution to be determined by the researcher)
<b>Size:</b>	50 µg
<b>Concentration:</b>	1 mg/ml

**Immunohistochemistry Image:**



Anti-SAFB antibody IHC of human brain, cortex. Immunohistochemistry of formalin-fixed, paraffin-embedded tissue after heat-induced antigen retrieval. Antibody LS-B1712 concentration 5 ug/ml.

**Requested From:**

Japan

Laboratory Reagent For In Vitro Research Use Only

Not for resale without prior written consent from LifeSpan BioSciences, Inc.

Created on 9/23/2014

© 2014 LifeSpan BioSciences