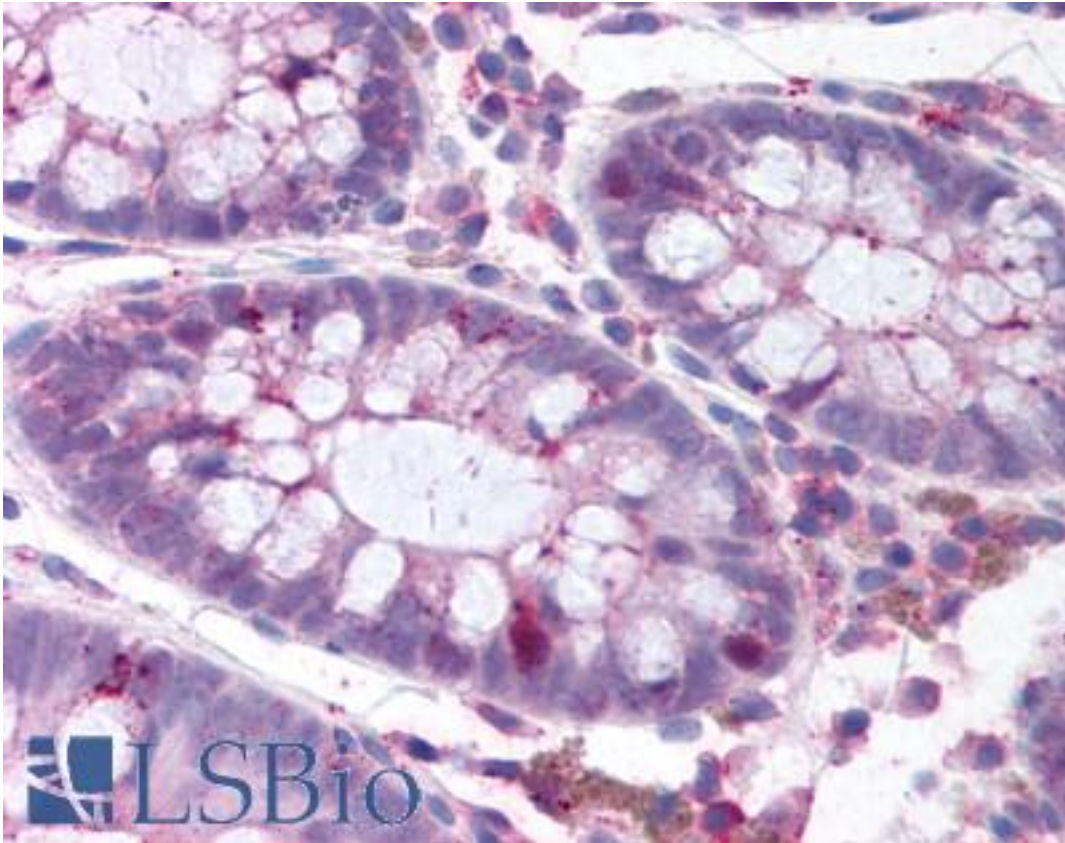


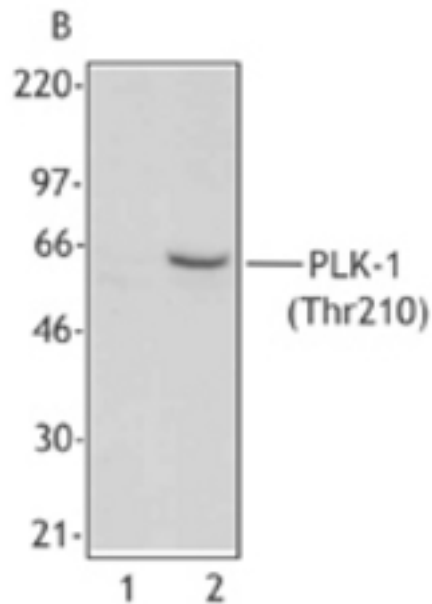
PLK1 / PLK-1 Mouse anti-Human Monoclonal (pThr210) (2A3) Antibody - LS-B1675 - LSBio	
CatalogID:	LS-B1675
Validation:	This antibody replaces catalog number LS-C41059. It has been validated for use in the following assays: IHC.
Target:	polo-like kinase 1 (PLK1)
Synonyms:	PLK1 Antibody, Polo like kinase Antibody, Polo-like kinase (Drosophila) Antibody, Polo-like kinase 1 Antibody, STPK13 Antibody, Polo (Drosophia)-like kinase Antibody, PLK Antibody, PLK-1 Antibody
Family / Subfamily:	Protein Kinase / Polo
Host	PLK1 antibody was produced in Mouse
Clonality:	Monoclonal
Isotype:	IgG1
Clone Name:	2A3
Immunogen Species:	PLK1 / PLK-1 antibody was raised against Human
Antigen Type:	Synthetic peptide
Immunogen:	PLK1 / PLK-1 antibody was raised against synthetic peptide from human PLK1.
Specificity:	Modified peptide
Epitope:	pThr210
Reactivity:	Human
Purification:	Affinity purified
Presentation:	Phosphate-buffered solution, pH 7.2, 0.09% sodium azide at 0.5 mg/ml. Sourced in TCS.
Recommended Storage:	+4°C, avoid freezing
Usage Summary:	Immunohistochemistry: LS-B1675 was validated for use in immunohistochemistry on a panel of 21 formalin-fixed, paraffin-embedded (FFPE) human tissues after heat induced antigen retrieval in pH 6.0 citrate buffer. After incubation with the primary antibody, slides were incubated with biotinylated secondary antibody, followed by alkaline phosphatase-streptavidin and chromogen. The stained slides were evaluated by a pathologist to confirm staining specificity. The optimal working concentration for LS-B1675 was determined to be 15 ug/ml.
Uses:	IHC - Paraffin (15 µg/ml), Western blot (Optimal dilution to be determined by the researcher)
Size:	50 µg
Concentration:	0.5 mg/ml

Immunohistochemistry Image:



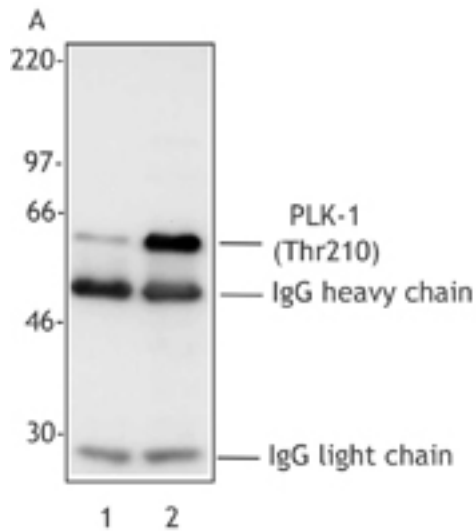
Anti-PLK1 antibody IHC of human colon. Immunohistochemistry of formalin-fixed, paraffin-embedded tissue after heat-induced antigen retrieval. Antibody LS-B1675 concentration 15 ug/ml.

Western Blot Image:



Panel A. Extracts from untreated HeLa cells (Lane 1) or overnight nocodazole-treated HeLa cells (Lane 2) were immunoprecipitated with the pan-PLK mAb (clone 3F8), resolved by electrophoresis, transferred to nitrocellulose and probed with mAb 2A3 reactive against Thr210-phosphorylated PLK-1. Proteins were visualized using an HRP goat anti-mouse secondary Ab and a chemiluminescence detection system. Panel B. Extracts from untreated HeLa cells (Lane 1) or overnight nocodazole-treated HeLa cells (Lane 2) were resolved by electrophoresis, transferred to nitrocellulose and probed with mAb 2A3 reactive against Thr210-phosphorylated PLK-1. Proteins were visualized using an HRP goat anti-mouse secondary and a chemiluminescence detection system.

Western Blot Image:



Requested From:

Japan

Laboratory Reagent For In Vitro Research Use Only

Not for resale without prior written consent from LifeSpan BioSciences, Inc.

Created on 9/23/2014

© 2014 LifeSpan BioSciences