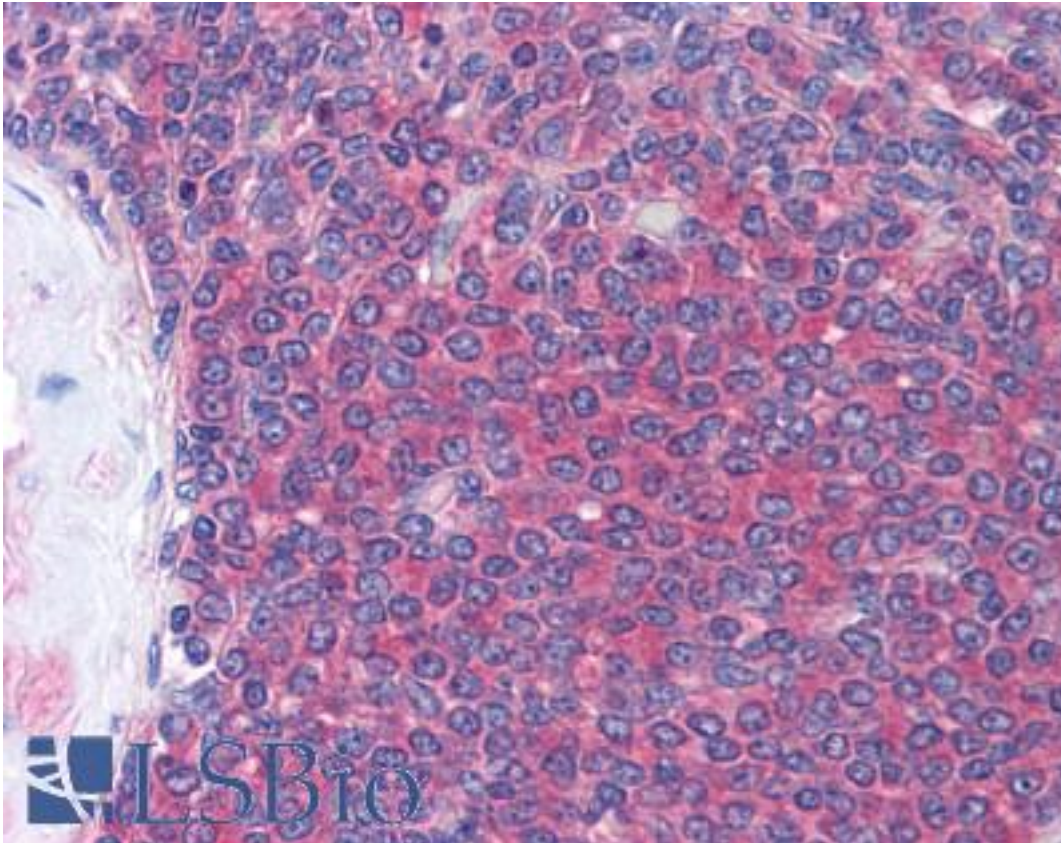


p56lck / LCK Mouse anti-Human Monoclonal (Lck-01) Antibody - LS-B1670 - LSBio

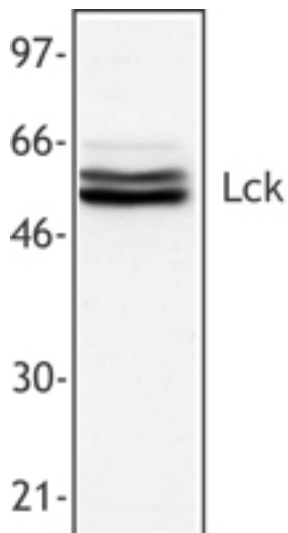
<b>CatalogID:</b>	LS-B1670
<b>Validation:</b>	This antibody replaces catalog number LS-C40942. It has been validated for use in the following assays: IHC.
<b>Target:</b>	lymphocyte-specific protein tyrosine kinase (LCK)
<b>Synonyms:</b>	LCK Antibody, Lck kinase Antibody, LSK Antibody, p56-LCK Antibody, Pp58lck Antibody, Tyrosine-protein kinase Lck Antibody, p56lck Antibody, Protein YT16 Antibody, Proto-oncogene Lck Antibody, YT16 Antibody
<b>Family / Subfamily:</b>	Protein Kinase / Src
<b>Host</b>	LCK antibody was produced in Mouse
<b>Clonality:</b>	Monoclonal
<b>Isotype:</b>	IgG1
<b>Clone Name:</b>	Lck-01
<b>Immunogen Species:</b>	p56lck / LCK antibody was raised against Human
<b>Antigen Type:</b>	Synthetic peptide
<b>Immunogen:</b>	p56lck / LCK antibody was raised against synthetic peptide from human LCK.
<b>Specificity:</b>	Peptide corresponding to a. a. 22-36 in human Lck.
<b>Reactivity:</b>	Human
<b>Purification:</b>	Affinity purified
<b>Presentation:</b>	PBS, pH 7.2, 0.09% sodium azide.
<b>Recommended Storage:</b>	+4°C, avoid freezing
<b>Usage Summary:</b>	Immunohistochemistry: LS-B1670 was validated for use in immunohistochemistry on a panel of 21 formalin-fixed, paraffin-embedded (FFPE) human tissues after heat induced antigen retrieval in pH 6.0 citrate buffer. After incubation with the primary antibody, slides were incubated with biotinylated secondary antibody, followed by alkaline phosphatase-streptavidin and chromogen. The stained slides were evaluated by a pathologist to confirm staining specificity. The optimal working concentration for LS-B1670 was determined to be 15 ug/ml.
<b>Uses:</b>	IHC - Paraffin (15 µg/ml), ICC, Western blot, Immunoprecipitation, Flow Cytometry (Optimal dilution to be determined by the researcher)
<b>Size:</b>	50 µg
<b>Concentration:</b>	0.5 mg/ml

**Immunohistochemistry Image:**



Anti-LCK antibody IHC of human spleen. Immunohistochemistry of formalin-fixed, paraffin-embedded tissue after heat-induced antigen retrieval. Antibody LS-B1670 concentration 15 ug/ml.

**Western Blot Image:**



Jurkat cell extract was resolved by electrophoresis, transferred to nitrocellulose and probed with monoclonal anti-Lck (clone LCK-01) antibody. Proteins were visualized using a goat anti-mouse secondary conjugated to HRP and a chemiluminescence detection system.

Requested From:

Japan

Laboratory Reagent For In Vitro Research Use Only

Not for resale without prior written consent from LifeSpan BioSciences, Inc.

Created on 9/23/2014

© 2014 LifeSpan BioSciences