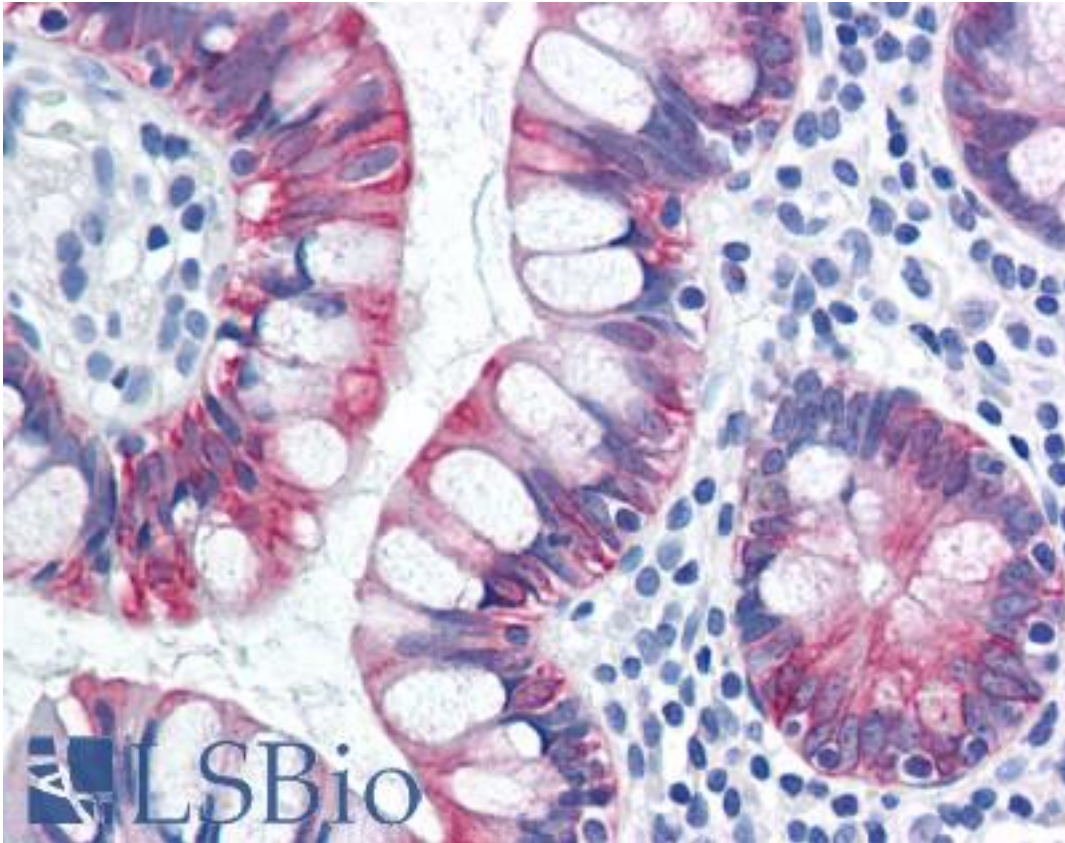


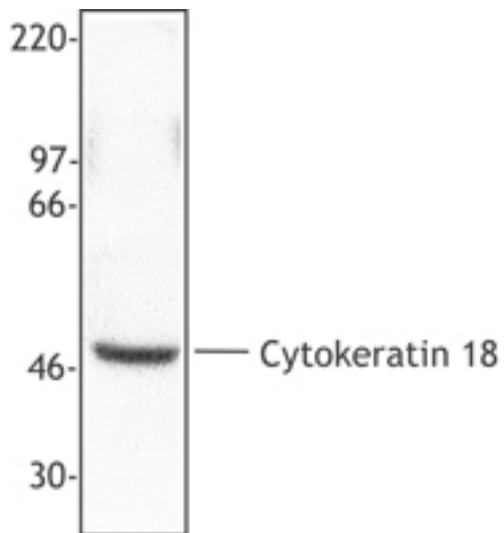
KRT18 / CK18 / Cytokeratin 18 Rabbit anti-Mouse Polyclonal (C-Terminus) Antibody - LS-B1669 - LSBio	
CatalogID:	LS-B1669
Validation:	This antibody replaces catalog number LS-C41279. It has been validated for use in the following assays: IHC.
Target:	keratin 18 (KRT18)
Synonyms:	KRT18 Antibody, CK-18 Antibody, Cytokeratin 18 Antibody, Cytokeratin-18 Antibody, K18 Antibody, Keratin 18 Antibody, CYK18 Antibody, Keratin-18 Antibody
Family / Subfamily:	Keratin / not assigned-Keratin
Host	KRT18 antibody was produced in Rabbit
Clonality:	Polyclonal
Isotype:	IgG
Immunogen Species:	KRT18 / CK18 / Cytokeratin 18 antibody was raised against Mouse
Immunogen:	KRT18 / CK18 / Cytokeratin 18 antibody was raised against recombinant mouse KRT18 / Cytokeratin 18.
Specificity:	Recombinant (partial), C-terminal
Epitope:	C-Terminus
Reactivity:	Mouse, Human
Purification:	Immunoaffinity purified
Presentation:	Phosphate-buffered solution, pH 7.2, 0.09% sodium azide, 50% glycerol.
Recommended Storage:	+4°C or -20°C, Avoid repeated freezing and thawing.
Usage Summary:	Immunohistochemistry: LS-B1669 was validated for use in immunohistochemistry on a panel of 21 formalin-fixed, paraffin-embedded (FFPE) human tissues after heat induced antigen retrieval in pH 6.0 citrate buffer. After incubation with the primary antibody, slides were incubated with biotinylated secondary antibody, followed by alkaline phosphatase-streptavidin and chromogen. The stained slides were evaluated by a pathologist to confirm staining specificity. The optimal working concentration for LS-B1669 was determined to be 1:50.
Uses:	IHC - Paraffin (1:50), Western blot (Optimal dilution to be determined by the researcher)
Size:	50 µl

Immunohistochemistry Image:



Anti-KRT18 / Cytokeratin 18 antibody IHC of human small intestine. Immunohistochemistry of formalin-fixed, paraffin-embedded tissue after heat-induced antigen retrieval. Antibody LS-B1669 dilution 1:50.

Western Blot Image:



Hela cell extract was resolved by electrophoresis, transferred to nitrocellulose and probed with anti-cytokeratin 18 antibody. Proteins were visualized using a donkey anti-rabbit secondary conjugated to HRP and a chemiluminescence detection system.

Requested From:

Japan

Laboratory Reagent For In Vitro Research Use Only

Not for resale without prior written consent from LifeSpan BioSciences, Inc.

Created on 9/23/2014

© 2014 LifeSpan BioSciences