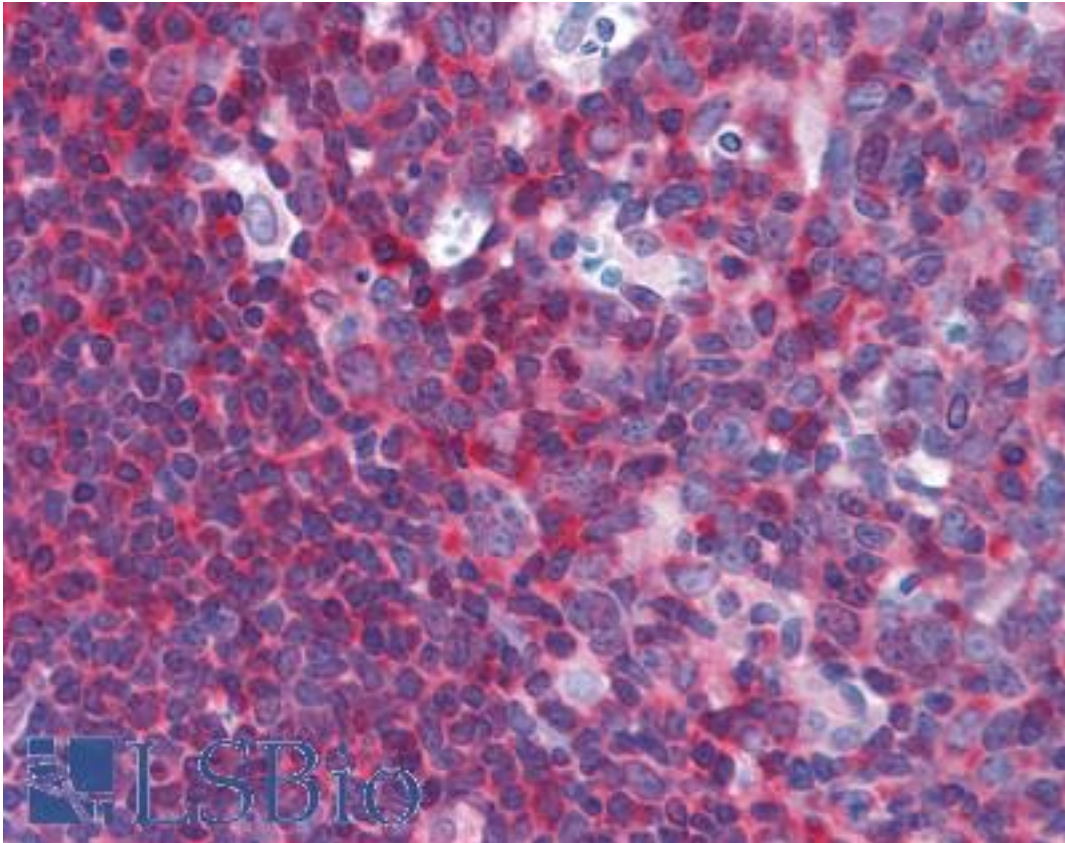


### NFKB1 Mouse anti-Human Monoclonal (4D1) Antibody - LS-B1668 - LSBio

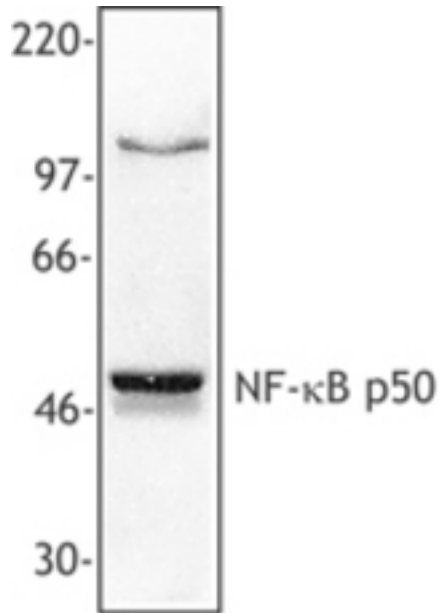
<b>CatalogID:</b>	LS-B1668
<b>Validation:</b>	This antibody replaces catalog number LS-C40935. It has been validated for use in the following assays: IHC.
<b>Target:</b>	nuclear factor of kappa light polypeptide gene enhancer in B-cells 1 (NFKB1)
<b>Synonyms:</b>	NFKB1 Antibody, Ebp- 1 Antibody, EBP-1 Antibody, NF-KappaB p50 Antibody, NFkappaB Antibody, NFKB-p50 Antibody, KBF1 Antibody, NF-kappa-B Antibody, NF-kappaB Antibody, NF-kB1 Antibody, NFKB-p105 Antibody, p105 Antibody, p50 Antibody, DNA binding factor KBF1 Antibody, DNA-binding factor KBF1 Antibody, NF-kappabeta Antibody
<b>Family / Subfamily:</b>	Apoptosis / not assigned-Other
<b>Host</b>	NFKB1 antibody was produced in Mouse
<b>Clonality:</b>	Monoclonal
<b>Isotype:</b>	IgG1
<b>Clone Name:</b>	4D1
<b>Immunogen Species:</b>	NFKB1 antibody was raised against Human
<b>Immunogen:</b>	NFKB1 antibody was raised against recombinant human NFKB1.
<b>Specificity:</b>	Recombinant full-length human NF-kB p50
<b>Reactivity:</b>	Human
<b>Purification:</b>	Affinity purified
<b>Presentation:</b>	Phosphate-buffered solution, pH 7.2, 0.09% sodium azide.
<b>Recommended Storage:</b>	+4°C, avoid freezing
<b>Usage Summary:</b>	Immunohistochemistry: LS-B1668 was validated for use in immunohistochemistry on a panel of 21 formalin-fixed, paraffin-embedded (FFPE) human tissues after heat induced antigen retrieval in pH 6.0 citrate buffer. After incubation with the primary antibody, slides were incubated with biotinylated secondary antibody, followed by alkaline phosphatase-streptavidin and chromogen. The stained slides were evaluated by a pathologist to confirm staining specificity. The optimal working concentration for LS-B1668 was determined to be 15 ug/ml.
<b>Uses:</b>	IHC - Paraffin (15 µg/ml), Immunofluorescence, Western blot (Optimal dilution to be determined by the researcher)
<b>Size:</b>	50 µg
<b>Concentration:</b>	0.5 mg/ml

**Immunohistochemistry Image:**



Anti-NFKB1 antibody IHC of human tonsil. Immunohistochemistry of formalin-fixed, paraffin-embedded tissue after heat-induced antigen retrieval. Antibody LS-B1668 concentration 15 ug/ml.

**Western Blot Image:**



MOLT4 cell extract was resolved by electrophoresis, transferred to nitrocellulose, and probed with mouse anti-NF-kappaB p50 antibody (clone 4D1). Proteins were visualized using a goat anti-mouse secondary conjugated to HRP and a chemiluminescence detection system.

**Requested From:**

Japan

Laboratory Reagent For In Vitro Research Use Only

Not for resale without prior written consent from LifeSpan BioSciences, Inc.

Created on 9/23/2014

© 2014 LifeSpan BioSciences