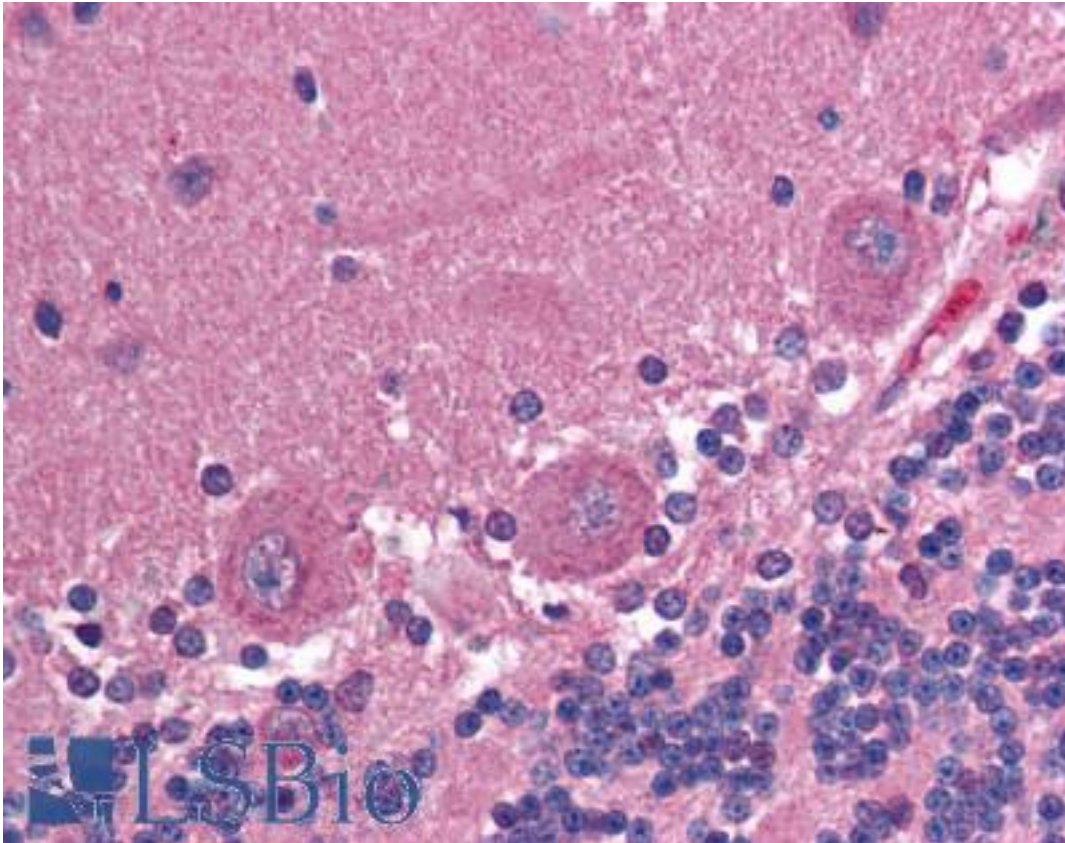


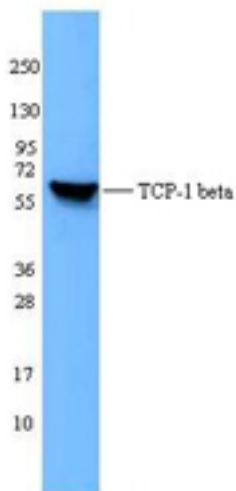
CCT2 / CCT Beta Mouse anti-Human Monoclonal (F39 P7 F11) Antibody - LS-B1661 - LSBio	
<b>CatalogID:</b>	LS-B1661
<b>Validation:</b>	This antibody replaces catalog number LS-C41109. It has been validated for use in the following assays: IHC.
<b>Target:</b>	chaperonin containing TCP1, subunit 2 (beta) (CCT2)
<b>Synonyms:</b>	CCT2 Antibody, 99D8.1 Antibody, CCT-beta Antibody, CCTB Antibody, PRO1633 Antibody, TCP-1-beta Antibody, TCP1 Beta Antibody
<b>Host</b>	CCT2 antibody was produced in Mouse
<b>Clonality:</b>	Monoclonal
<b>Isotype:</b>	IgG2a
<b>Clone Name:</b>	F39 P7 F11
<b>Immunogen Species:</b>	CCT2 / CCT Beta antibody was raised against Human
<b>Antigen Type:</b>	Synthetic peptide
<b>Immunogen:</b>	CCT2 / CCT Beta antibody was raised against synthetic peptide from human CCT2. Percent identity by BLAST analysis: Human, Gorilla, Gibbon, Monkey, Marmoset, Mouse, Rat, Dog, Bat, Bovine, Hamster, Horse, Pig, Opossum, Platypus, Xenopus, Salmon, Pufferfish, Zebrafish, Stickleback (100%); Chicken (90%).
<b>Specificity:</b>	TCP-1 $\beta$ (Chaperonin containing T complex polypeptide 1, subunit 2)
<b>Reactivity:</b>	Human, Gorilla, Gibbon, Monkey, Mouse, Rat, Bat, Bovine, Dog, Hamster, Horse, Pig, Xenopus, Zebrafish
<b>Predicted Reactivity:</b>	Chicken
<b>Purification:</b>	Affinity purified
<b>Presentation:</b>	Phosphate-buffered solution, pH 7.2, 0.09% sodium azide at 0.5 mg/ml. Sourced in TCS.
<b>Recommended Storage:</b>	+4°C, avoid freezing
<b>Usage Summary:</b>	Immunohistochemistry: LS-B1661 was validated for use in immunohistochemistry on a panel of 21 formalin-fixed, paraffin-embedded (FFPE) human tissues after heat induced antigen retrieval in pH 6.0 citrate buffer. After incubation with the primary antibody, slides were incubated with biotinylated secondary antibody, followed by alkaline phosphatase-streptavidin and chromogen. The stained slides were evaluated by a pathologist to confirm staining specificity. The optimal working concentration for LS-B1661 was determined to be 15 $\mu$ g/ml.
<b>Uses:</b>	IHC - Paraffin (15 $\mu$ g/ml), Western blot (Optimal dilution to be determined by the researcher)
<b>Size:</b>	50 $\mu$ g
<b>Concentration:</b>	0.5 mg/ml

**Immunohistochemistry Image:**



Anti-CCT2 antibody IHC of human brain, cerebellum. Immunohistochemistry of formalin-fixed, paraffin-embedded tissue after heat-induced antigen retrieval. Antibody LS-B1661 concentration 15 ug/ml.

**Western Blot Image:**



HepG2 cell extracts were resolved by electrophoresis, transferred to nitrocellulose, and probed with purified monoclonal TCP-1beta antibody (clone F39P7F11). Proteins were visualized using a goat anti-mouse-IgG secondary conjugated to HRP and chemiluminescence detection.

Requested From:

Japan

Laboratory Reagent For In Vitro Research Use Only

Not for resale without prior written consent from LifeSpan BioSciences, Inc.

Created on 9/23/2014

© 2014 LifeSpan BioSciences