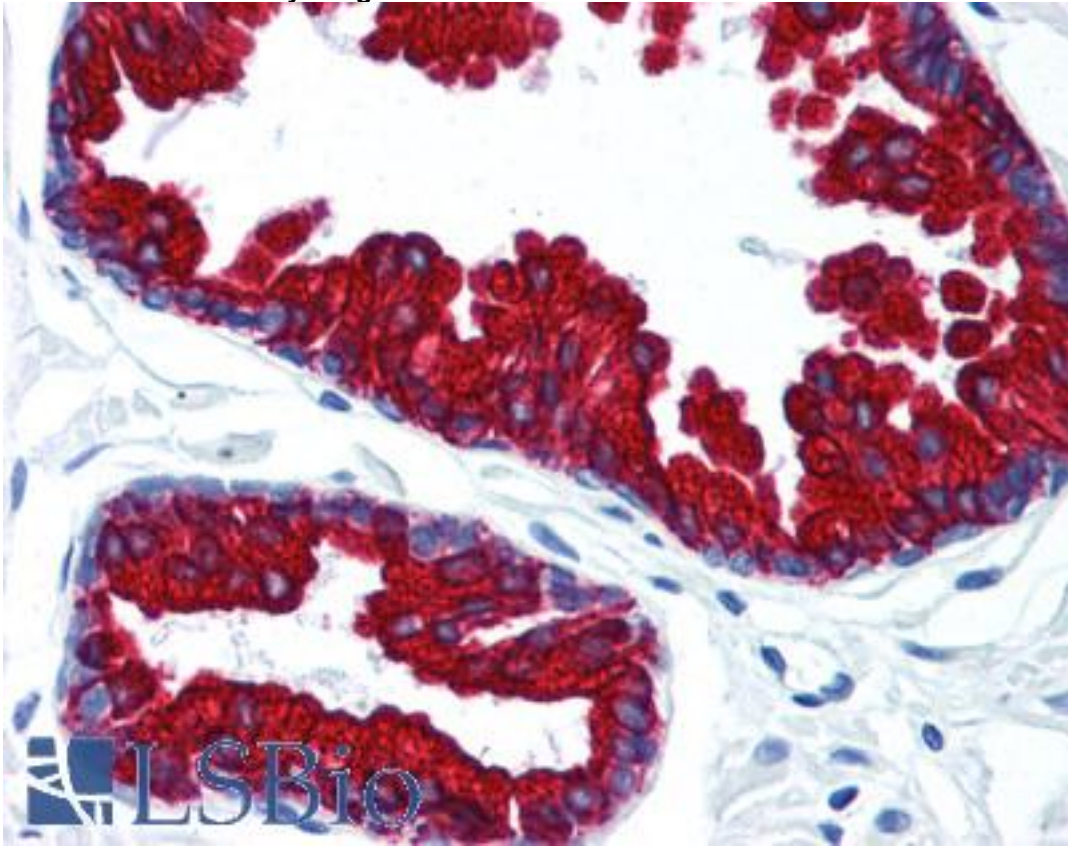


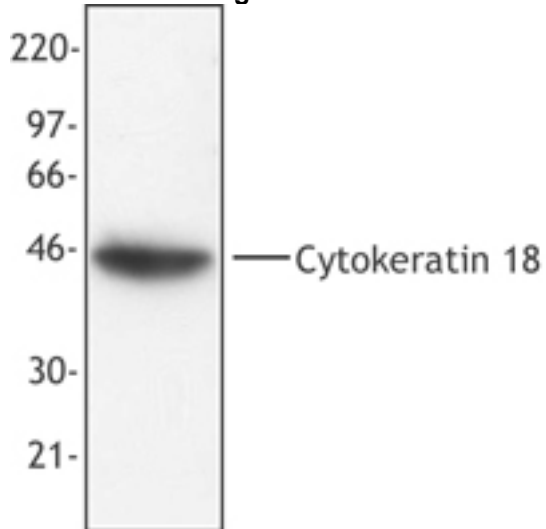
KRT18 / Cytokeratin 18 Mouse anti-Human Monoclonal (DA-7) Antibody - LS-B1658 - LSBio	
CatalogID:	LS-B1658
Validation:	This antibody replaces catalog number LS-C41056. It has been validated for use in the following assays: IHC.
Target:	keratin 18 (KRT18)
Synonyms:	KRT18 Antibody, CK-18 Antibody, Cytokeratin 18 Antibody, Cytokeratin-18 Antibody, K18 Antibody, Keratin 18 Antibody, CYK18 Antibody, Keratin-18 Antibody
Family / Subfamily:	Keratin / not assigned-Keratin
Host	KRT18 antibody was produced in Mouse
Clonality:	Monoclonal
Isotype:	IgG1
Clone Name:	DA-7
Immunogen Species:	KRT18 / Cytokeratin 18 antibody was raised against Human
Immunogen:	KRT18 / Cytokeratin 18 antibody was raised against cells.
Specificity:	Human breast carcinoma cell line PMC-42
Reactivity:	Human
Purification:	Affinity purified
Presentation:	Phosphate-buffered solution, pH 7.2, 0.09% sodium azide at 0.5 mg/ml.
Recommended Storage:	+4°C, avoid freezing
Usage Summary:	Immunohistochemistry: LS-B1658 was validated for use in immunohistochemistry on a panel of 21 formalin-fixed, paraffin-embedded (FFPE) human tissues after heat induced antigen retrieval in pH 6.0 citrate buffer. After incubation with the primary antibody, slides were incubated with biotinylated secondary antibody, followed by alkaline phosphatase-streptavidin and chromogen. The stained slides were evaluated by a pathologist to confirm staining specificity. The optimal working concentration for LS-B1658 was determined to be 15 ug/ml.
Uses:	IHC-P (15 µg/ml), ICC, Western blot, IP, Enzyme-Linked Immunosorbent Assay (Optimal dilution to be determined by the researcher)
Size:	50 µg

Immunohistochemistry Image:



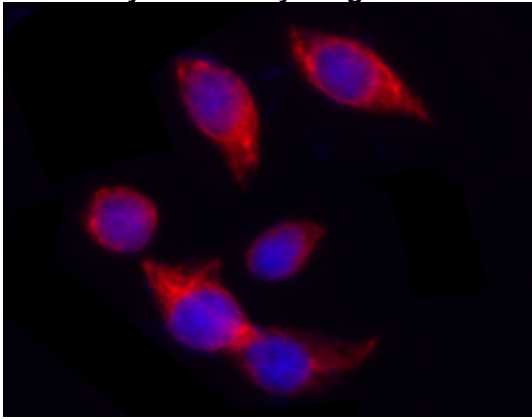
Anti-KRT18 / Cytokeratin 18 antibody IHC staining of human prostate. Immunohistochemistry of formalin-fixed, paraffin-embedded tissue after heat-induced antigen retrieval. Antibody LS-B1658 concentration 15 ug/ml.

Western Blot Image:



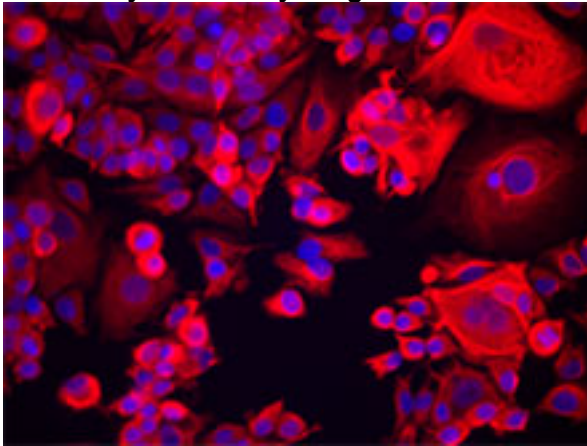
MCF-7 cell extract was resolved by electrophoresis, transferred to nitrocellulose and probed with monoclonal anti-cytokeratin 18 antibody (clone DA-7). Proteins were visualized using a goat anti-mouse secondary conjugated to HRP and a chemiluminescence detection system.

Immunocytochemistry Image:



HeLa cells stained with purified mouse monoclonal antibody against Cytokeratin 18 (clone DA-7), followed by Rhodamine Red-X conjugated Donkey anti-mouse IgG and DAPI

Immunocytochemistry Image:



MCF-7 cells were stained with anti-Cytokeratin 18 (clone DA-7), followed by Alexa Fluor[®] 546 secondary antibody and DAPI (nuclei). Images were acquired on a Nikon FC300 inverted microscope at 20X magnification. Data provided by Dr. John Nolan, La Jolla Bioengineering Institute.

Requested From:

Japan

Laboratory Reagent For In Vitro Research Use Only

Not for resale without prior written consent from LifeSpan BioSciences, Inc.

Created on 8/23/2013

© 2013 LifeSpan BioSciences