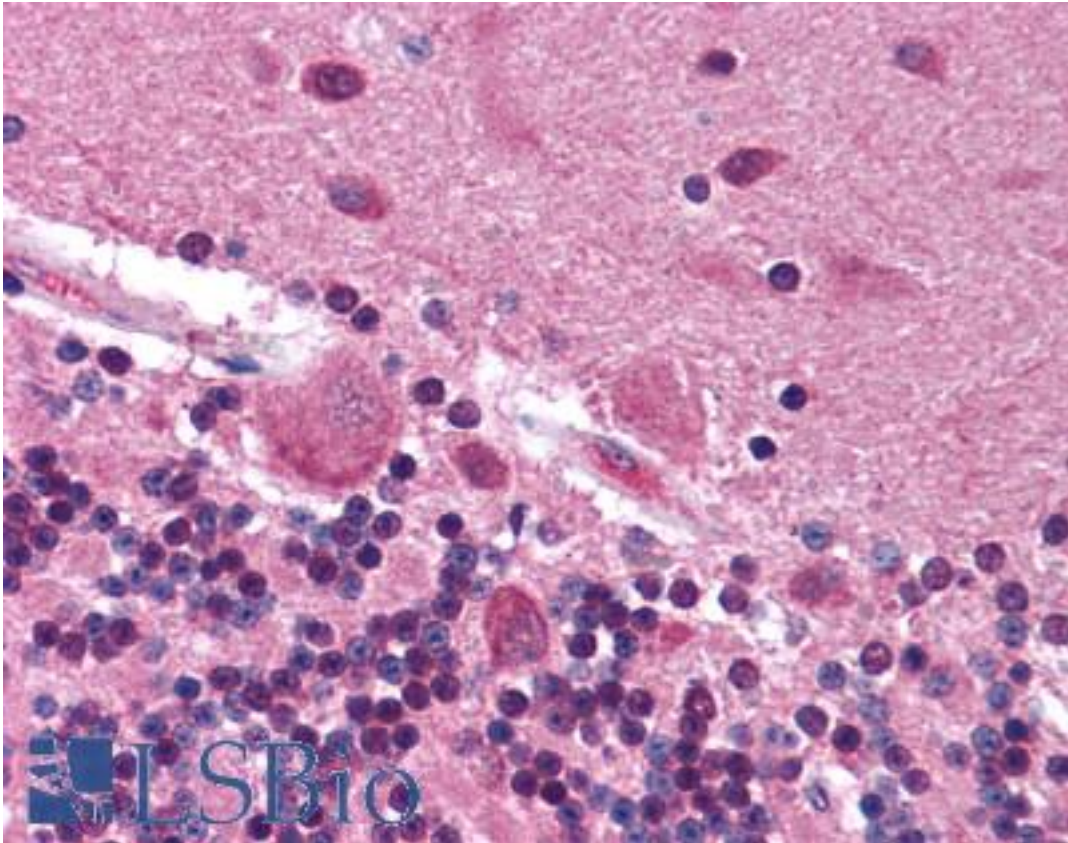


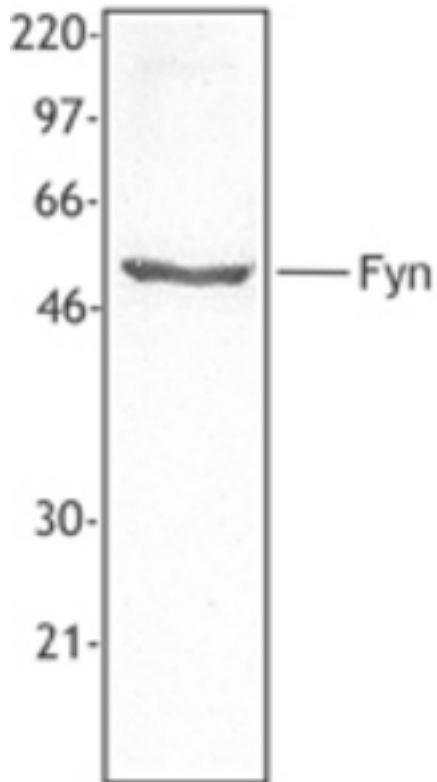
SYN / FYN Mouse anti-Human Monoclonal (aa7-176) (FYN-59) Antibody - LS-B1657 - LSBio	
CatalogID:	LS-B1657
Validation:	This antibody replaces catalog number LS-C40855. It has been validated for use in the following assays: IHC.
Target:	FYN oncogene related to SRC, FGR, YES
Synonyms:	FYN Antibody, C-syn protooncogene Antibody, Fyn kinase Antibody, Fyn tyrosine kinase Antibody, p59-FYN Antibody, SYN Antibody, Src-like kinase Antibody, Src/yes-related novel Antibody, Tyrosine kinase fyn Antibody, Tyrosine kinase p59fyn(T) Antibody, Tyrosine-protein kinase Fyn Antibody, Proto-oncogene c-Fyn Antibody, Proto-oncogene Syn Antibody
Family / Subfamily:	Protein Kinase / Src
Host	FYN antibody was produced in Mouse
Clonality:	Monoclonal
Isotype:	IgG
Clone Name:	FYN-59
Immunogen Species:	SYN / FYN antibody was raised against Human
Immunogen:	SYN / FYN antibody was raised against recombinant human FYN.
Specificity:	Partial recombinant human Fyn (aa 7-176) expressed in E coli
Epitope:	aa7-176
Reactivity:	Human, Mouse
Purification:	Affinity purified
Presentation:	Phosphate-buffered solution, pH 7.2, 0.09% sodium azide at 0.5 mg/ml.
Recommended Storage:	+4°C, avoid freezing
Usage Summary:	Immunohistochemistry: LS-B1657 was validated for use in immunohistochemistry on a panel of 21 formalin-fixed, paraffin-embedded (FFPE) human tissues after heat induced antigen retrieval in pH 6.0 citrate buffer. After incubation with the primary antibody, slides were incubated with biotinylated secondary antibody, followed by alkaline phosphatase-streptavidin and chromogen. The stained slides were evaluated by a pathologist to confirm staining specificity. The optimal working concentration for LS-B1657 was determined to be 15 ug/ml.
Uses:	IHC - Paraffin (15 µg/ml), Western blot, Immunoprecipitation (Optimal dilution to be determined by the researcher)
Size:	50 µg

Immunohistochemistry Image:



Anti-FYN antibody IHC of human brain, cerebellum. Immunohistochemistry of formalin-fixed, paraffin-embedded tissue after heat-induced antigen retrieval. Antibody LS-B1657 concentration 15 ug/ml.

Western Blot Image:



Extracts from human PBMC were resolved by electrophoresis, transferred to nitrocellulose, and probed with monoclonal antibody against Fyn. Proteins were visualized using a goat anti-mouse secondary conjugated to HRP and a chemiluminescence detection system.

Requested From:

Japan

Laboratory Reagent For In Vitro Research Use Only

Not for resale without prior written consent from LifeSpan BioSciences, Inc.

Created on 9/23/2014

© 2014 LifeSpan BioSciences