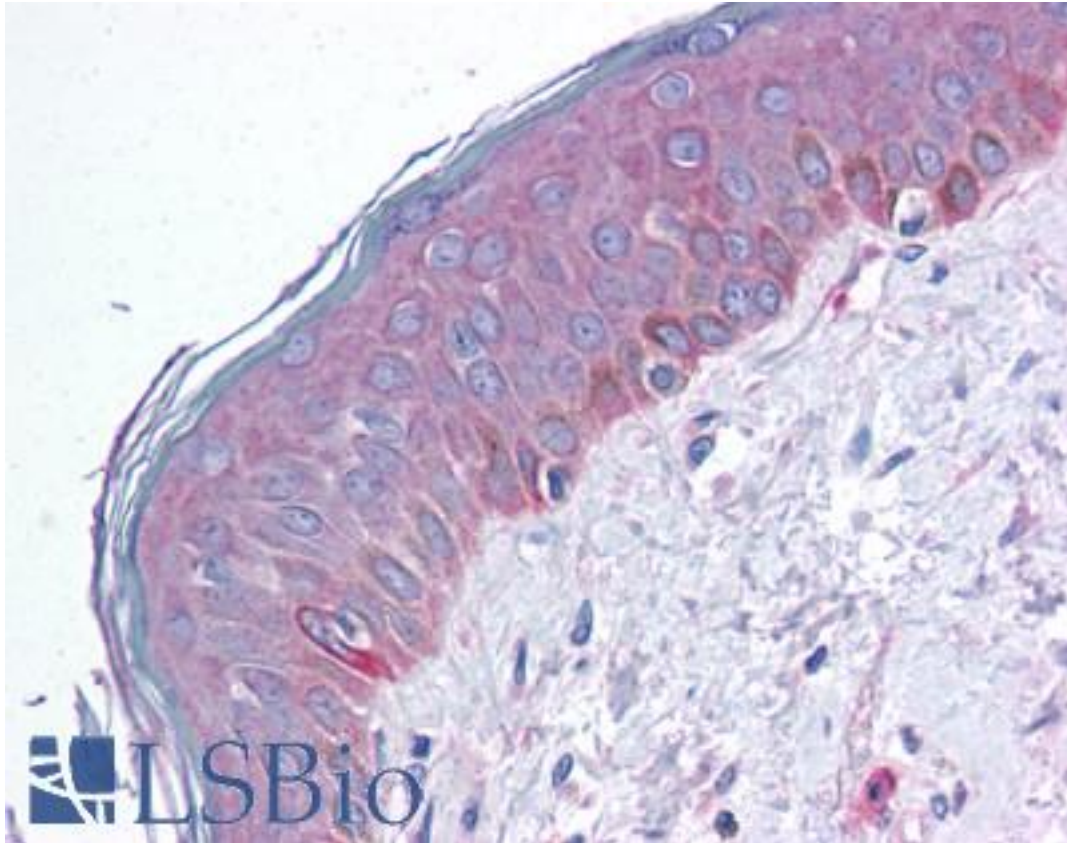


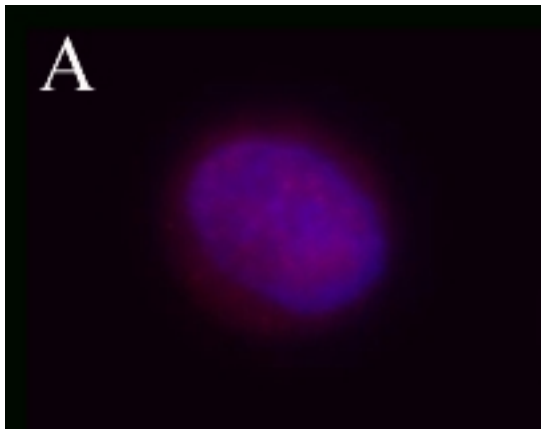
Tuberin / TSC2 Rabbit anti-Human Polyclonal (pSer664) Antibody - LS-B1654 - LSBio	
CatalogID:	LS-B1654
Validation:	This antibody replaces catalog number LS-C41185. It has been validated for use in the following assays: IHC.
Target:	tuberous sclerosis 2 (TSC2)
Synonyms:	TSC2 Antibody, LAM Antibody, Tuberous sclerosis 2 protein Antibody, TSC4 Antibody, Tuberin Antibody, Tuberous sclerosis 2 Antibody
Host	TSC2 antibody was produced in Rabbit
Clonality:	Polyclonal
Isotype:	IgG
Immunogen Species:	Tuberin / TSC2 antibody was raised against Human
Antigen Type:	Synthetic peptide
Immunogen:	Tuberin / TSC2 antibody was raised against synthetic peptide from human TSC2.
Specificity:	Modified peptide
Epitope:	pSer664
Reactivity:	Human
Purification:	Affinity purified
Presentation:	Phosphate-buffered solution, pH 7.2, 0.09% sodium azide, 50% glycerol.
Recommended Storage:	Long term: -20°C; Short term: +4°C. Avoid repeat freeze-thaw cycles.
Usage Summary:	Immunohistochemistry: LS-B1654 was validated for use in immunohistochemistry on a panel of 21 formalin-fixed, paraffin-embedded (FFPE) human tissues after heat induced antigen retrieval in pH 6.0 citrate buffer. After incubation with the primary antibody, slides were incubated with biotinylated secondary antibody, followed by alkaline phosphatase-streptavidin and chromogen. The stained slides were evaluated by a pathologist to confirm staining specificity. The optimal working concentration for LS-B1654 was determined to be 1:50.
Uses:	IHC - Paraffin (1:50), Immunofluorescence (Optimal dilution to be determined by the researcher)
Size:	50 µl
Concentration:	0.35 mg/ml

Immunohistochemistry Image:

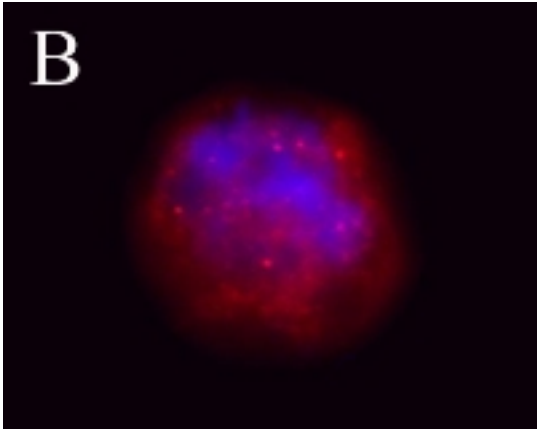


Anti-TSC2 / Tuberin antibody IHC of human skin. Immunohistochemistry of formalin-fixed, paraffin-embedded tissue after heat-induced antigen retrieval. Antibody LS-B1654 dilution 1:50.

Immunocytochemistry Image:



Immunocytochemistry Image:



Untreated Hela cells (Panel A), or overnight nocodazole treated Hela cells (Panel B) stained with purified rabbit polyclonal antibody Poly6359 against phospho-TSC2 (Ser664), followed by Cy3-conjugated Donkey anti-rabbit IgG and DAPI.

Requested From:

Japan

Laboratory Reagent For In Vitro Research Use Only

Not for resale without prior written consent from LifeSpan BioSciences, Inc.

Created on 9/23/2014

© 2014 LifeSpan BioSciences