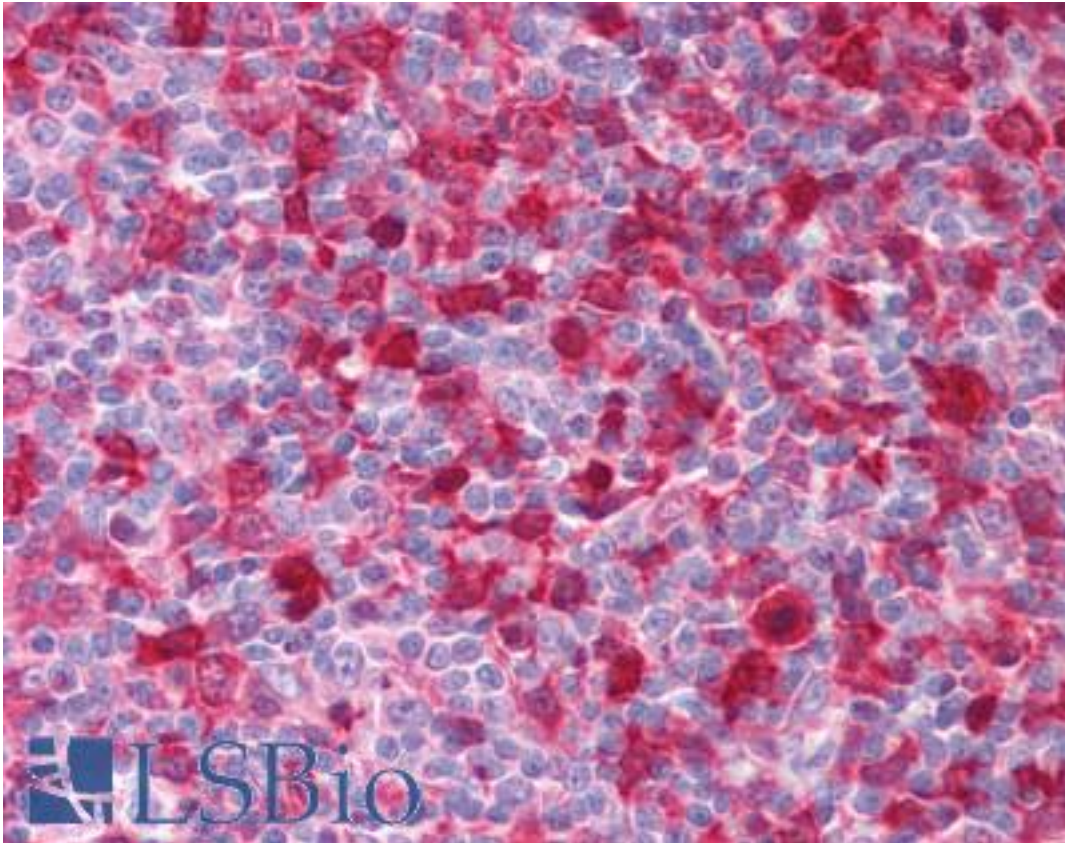


SYK Mouse anti-Human Monoclonal (aa5-360) (SYK-01) Antibody - LS-B1652 - LSBio

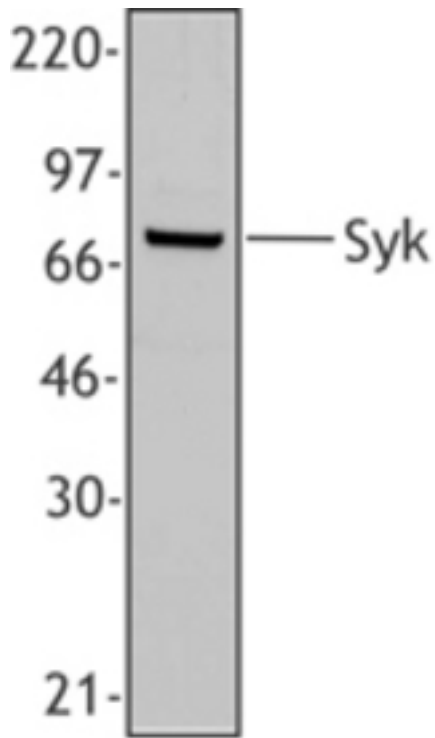
<b>CatalogID:</b>	LS-B1652
<b>Validation:</b>	This antibody replaces catalog number LS-C40936. It has been validated for use in the following assays: IHC.
<b>Target:</b>	spleen tyrosine kinase (SYK)
<b>Synonyms:</b>	SYK Antibody, p72syk Antibody, Spleen tyrosine kinase Antibody, Syk protein-tyrosine kinase Antibody, Tyrosine-protein kinase SYK Antibody, p72-Syk Antibody
<b>Family / Subfamily:</b>	Protein Kinase / Syk/ZAP70
<b>Host</b>	SYK antibody was produced in Mouse
<b>Clonality:</b>	Monoclonal
<b>Isotype:</b>	IgG1
<b>Clone Name:</b>	SYK-01
<b>Immunogen Species:</b>	SYK antibody was raised against Human
<b>Immunogen:</b>	SYK antibody was raised against recombinant human SYK.
<b>Specificity:</b>	Partial recombinant (amino acids 5-360) human Syk
<b>Epitope:</b>	aa5-360
<b>Reactivity:</b>	Human, Mouse, Rat
<b>Purification:</b>	Affinity purified
<b>Presentation:</b>	Phosphate-buffered solution, pH 7.2, 0.09% sodium azide.
<b>Recommended Storage:</b>	+4°C, avoid freezing
<b>Usage Summary:</b>	Immunohistochemistry: LS-B1652 was validated for use in immunohistochemistry on a panel of 21 formalin-fixed, paraffin-embedded (FFPE) human tissues after heat induced antigen retrieval in pH 6.0 citrate buffer. After incubation with the primary antibody, slides were incubated with biotinylated secondary antibody, followed by alkaline phosphatase-streptavidin and chromogen. The stained slides were evaluated by a pathologist to confirm staining specificity. The optimal working concentration for LS-B1652 was determined to be 10 ug/ml.
<b>Uses:</b>	IHC - Paraffin (10 µg/ml), Western blot (1:500) (Optimal dilution to be determined by the researcher)
<b>Size:</b>	50 µg
<b>Concentration:</b>	0.5 mg/ml

**Immunohistochemistry Image:**



Anti-SYK antibody IHC of human tonsil. Immunohistochemistry of formalin-fixed, paraffin-embedded tissue after heat-induced antigen retrieval. Antibody LS-B1652 concentration 10 ug/ml.

**Western Blot Image:**



Western blot of extracts from Human PBMC, using anti-Syk, Clone SYK-01.

**Requested From:**

Japan

Laboratory Reagent For In Vitro Research Use Only

Not for resale without prior written consent from LifeSpan BioSciences, Inc.

Created on 9/23/2014

© 2014 LifeSpan BioSciences