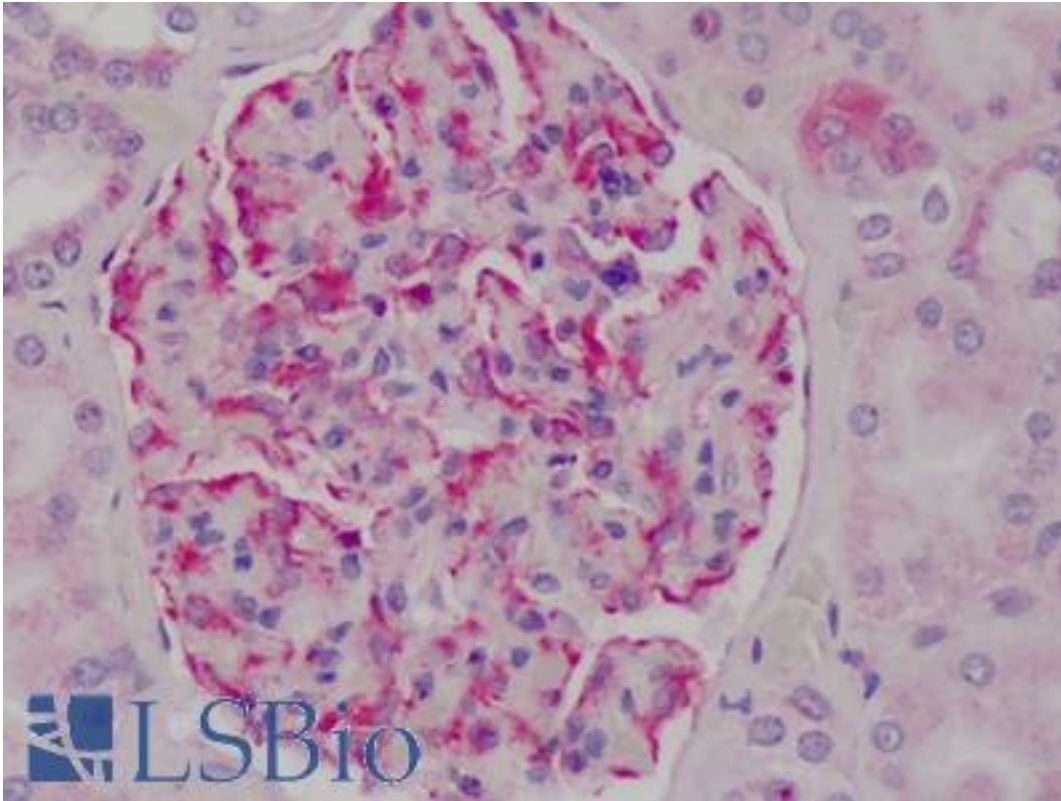


NFKBIA / IKB Alpha / IKBA Rabbit anti-Mouse Polyclonal (C-Terminus) Antibody - LS-B1640 - LSBio

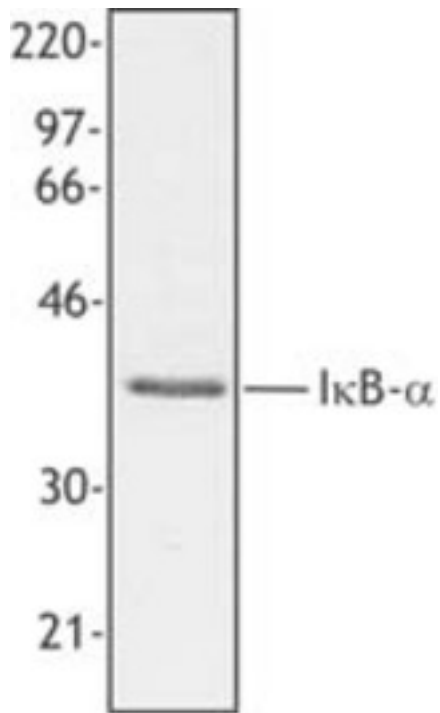
CatalogID:	LS-B1640
Validation:	This antibody replaces catalog number LS-C40918. It has been validated for use in the following assays: IHC.
Target:	nuclear factor of kappa light polypeptide gene enhancer in B-cells inhibitor, alpha (NFKBIA)
Synonyms:	NFKBIA Antibody, Ikb-alpha Antibody, IKBA Antibody, IkappaBalphabeta Antibody, MAD3 Antibody, NF-kappa-B inhibitor alpha Antibody, NFKBI Antibody, I-kappa-B-alpha Antibody, IKB Alpha Antibody, MAD-3 Antibody
Family / Subfamily:	Apoptosis / not assigned-Other
Host	NFKBIA antibody was produced in Rabbit
Clonality:	Polyclonal
Isotype:	IgG
Immunogen Species:	NFKBIA / IKB Alpha / IKBA antibody was raised against Mouse
Antigen Type:	Synthetic peptide
Immunogen:	NFKBIA / IKB Alpha / IKBA antibody was raised against synthetic peptide from mouse NFKBIA.
Specificity:	Peptide mapping to the carboxy terminus of human Ikb-alpha
Epitope:	C-Terminus
Reactivity:	Mouse, Human, Rat
Purification:	Immunoaffinity purified
Presentation:	Phosphate-buffered solution, pH 7.2, 0.09% sodium azide, 0.2% gelatin.
Recommended Storage:	+4°C, avoid freezing
Usage Summary:	Immunohistochemistry: LS-B1640 was validated for use in immunohistochemistry on a panel of 21 formalin-fixed, paraffin-embedded (FFPE) human tissues after heat induced antigen retrieval in pH 6.0 citrate buffer. After incubation with the primary antibody, slides were incubated with biotinylated secondary antibody, followed by alkaline phosphatase-streptavidin and chromogen. The stained slides were evaluated by a pathologist to confirm staining specificity. The optimal working concentration for LS-B1640 was determined to be 1:50.
Uses:	IHC - Paraffin (1:50), Western blot, Immunoprecipitation (Optimal dilution to be determined by the researcher)
Size:	50 µl

Immunohistochemistry Image:



Anti-IKB Alpha antibody IHC of human kidney. Immunohistochemistry of formalin-fixed, paraffin-embedded tissue after heat-induced antigen retrieval. Antibody LS-B1640 dilution 1:50.

Western Blot Image:



Hela cell extract was resolved by electrophoresis, transferred to nitrocellulose, and probed with rabbit anti-IkappaBalpha polyclonal antibody. Proteins were visualized using a donkey anti-rabbit secondary antibody conjugated to HRP and a chemiluminescence system.

Requested From:

Japan

Laboratory Reagent For In Vitro Research Use Only

Not for resale without prior written consent from LifeSpan BioSciences, Inc.

Created on 9/23/2014

© 2014 LifeSpan BioSciences