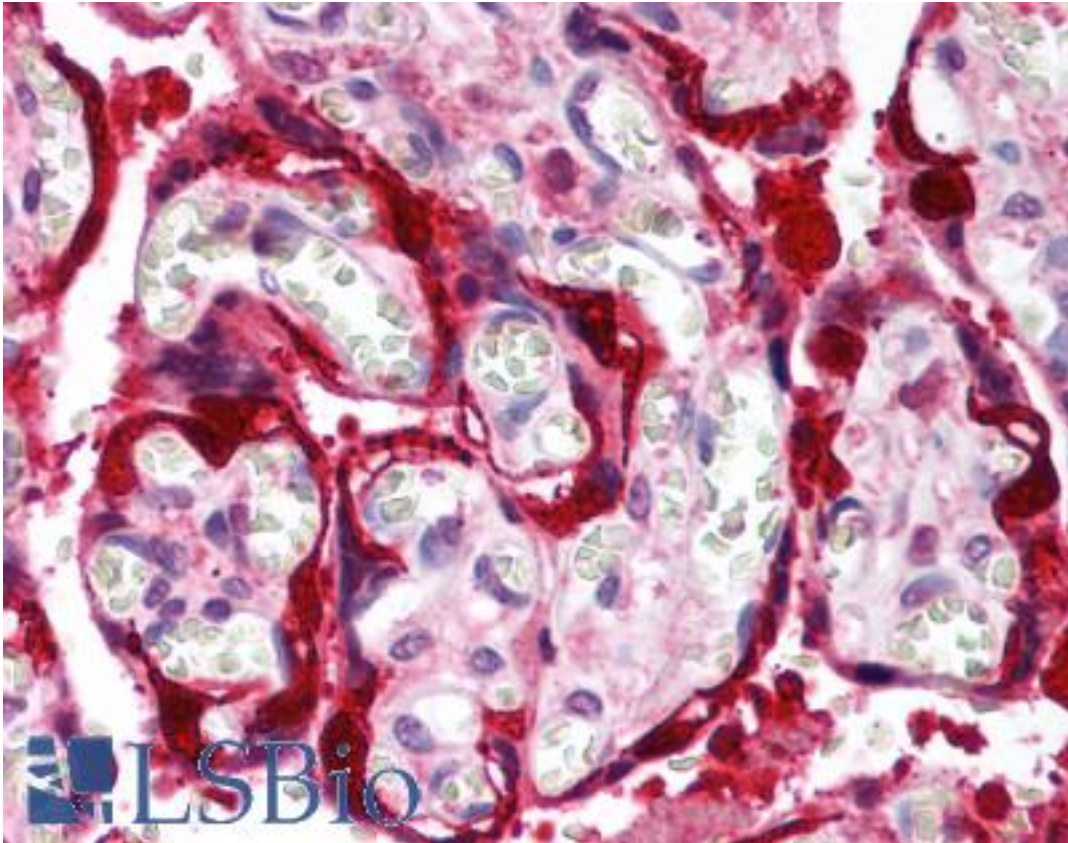


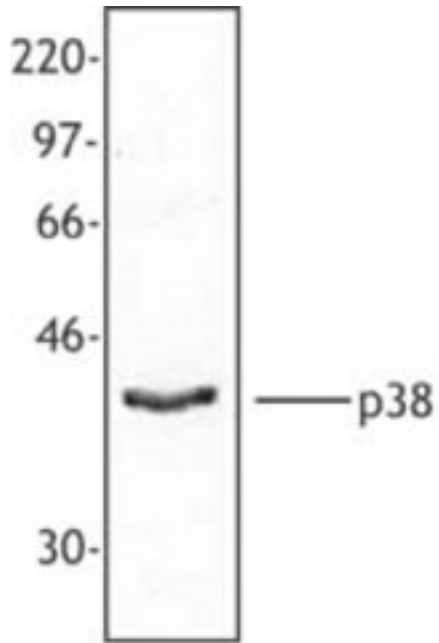
MAPK14 / p38 Rabbit anti-Mouse Polyclonal (C-Terminus) Antibody - LS-B1634 - LSBio	
CatalogID:	LS-B1634
Validation:	This antibody replaces catalog number LS-C41294. It has been validated for use in the following assays: IHC.
Target:	mitogen-activated protein kinase 14 (MAPK14)
Synonyms:	MAPK14 Antibody, CSAID-binding protein Antibody, CSBP2 Antibody, CSPB1 Antibody, CSBP1 Antibody, Csaids binding protein Antibody, CSBP Antibody, EXIP Antibody, MAP kinase 14 Antibody, MAP kinase p38 alpha Antibody, MAX-interacting protein 2 Antibody, MAPK 14 Antibody, p38 alpha Antibody, PRKM15 Antibody, PRKM14 Antibody, RK Antibody, SAPK2A Antibody, MAP kinase MXI2 Antibody, Mxi2 Antibody, p38ALPHA Antibody, p38 Antibody, p38 MAP kinase Antibody, p38alpha Exip Antibody
Family / Subfamily:	Protein Kinase / MAPK
Host	MAPK14 antibody was produced in Rabbit
Clonality:	Polyclonal
Isotype:	IgG
Immunogen Species:	MAPK14 / p38 antibody was raised against Mouse
Antigen Type:	Synthetic peptide
Immunogen:	MAPK14 / p38 antibody was raised against synthetic peptide from mouse MAPK14 / p38.
Specificity:	Peptide-KLH, C terminal
Epitope:	C-Terminus
Reactivity:	Mouse, Human, Rat
Purification:	Immunoaffinity purified
Presentation:	Phosphate-buffered solution, pH 7.2, 0.09% sodium azide, 0.1% gelatin.
Recommended Storage:	+4°C, avoid freezing
Usage Summary:	Immunohistochemistry: LS-B1634 was validated for use in immunohistochemistry on a panel of 21 formalin-fixed, paraffin-embedded (FFPE) human tissues after heat induced antigen retrieval in pH 6.0 citrate buffer. After incubation with the primary antibody, slides were incubated with biotinylated secondary antibody, followed by alkaline phosphatase-streptavidin and chromogen. The stained slides were evaluated by a pathologist to confirm staining specificity. The optimal working concentration for LS-B1634 was determined to be 1:100.
Uses:	IHC - Paraffin (1:100), Western blot (Optimal dilution to be determined by the researcher)
Size:	50 µl

Immunohistochemistry Image:



Anti-MAPK14 / p38 antibody IHC of human placenta. Immunohistochemistry of formalin-fixed, paraffin-embedded tissue after heat-induced antigen retrieval. Antibody LS-B1634 dilution 1:100.

Western Blot Image:



Hela cell extract was resolved by electrophoresis, transferred to nitrocellulose, and probed with rabbit anti-p38 MAPK antibody. Proteins were visualized using a donkey anti-rabbit secondary conjugated to HRP and a chemiluminescence detection system.

Requested From:

Japan

Laboratory Reagent For In Vitro Research Use Only

Not for resale without prior written consent from LifeSpan BioSciences, Inc.

Created on 9/23/2014

© 2014 LifeSpan BioSciences