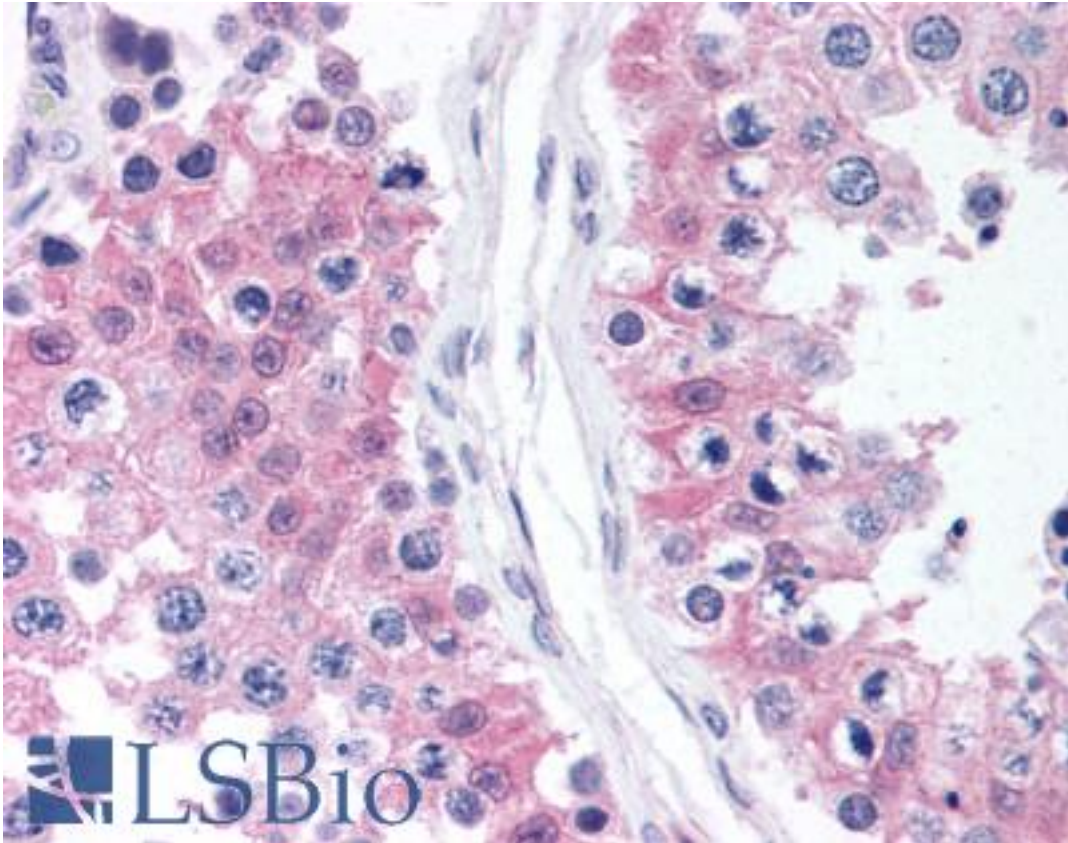


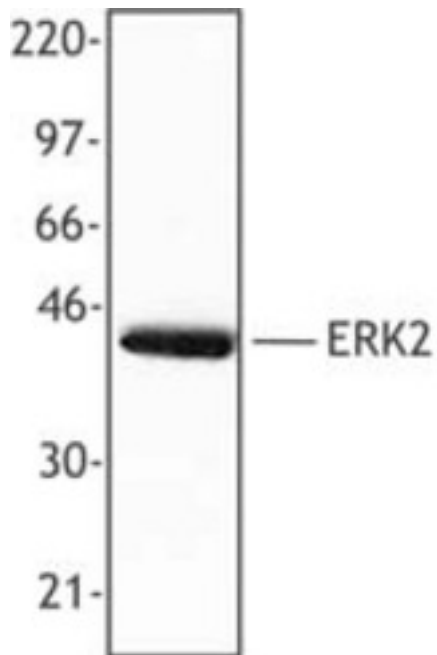
MAPK1 / ERK2 / p42 Rabbit anti-Rat Polyclonal (C-Terminus) Antibody - LS-B1633 - LSBio	
<b>CatalogID:</b>	LS-B1633
<b>Validation:</b>	This antibody replaces catalog number LS-C40912. It has been validated for use in the following assays: IHC.
<b>Target:</b>	mitogen-activated protein kinase 1 (MAPK1)
<b>Synonyms:</b>	MAPK1 Antibody, ERK Antibody, ERK-2 Antibody, ERK2 Antibody, MAP kinase 1 Antibody, MAPK 2 Antibody, MAPK2 Antibody, MAP kinase isoform p42 Antibody, MAPK 1 Antibody, p41mapk Antibody, PRKM2 Antibody, MAP kinase 2 Antibody, p41 Antibody, p42-MAPK Antibody, PRKM1 Antibody, ERT1 Antibody, p38 Antibody, p40 Antibody, p42MAPK Antibody, Protein tyrosine kinase ERK2 Antibody
<b>Family / Subfamily:</b>	Protein Kinase / MAPK
<b>Host</b>	MAPK1 antibody was produced in Rabbit
<b>Clonality:</b>	Polyclonal
<b>Isotype:</b>	IgG
<b>Immunogen Species:</b>	MAPK1 / ERK2 / p42 antibody was raised against Rat
<b>Antigen Type:</b>	Synthetic peptide
<b>Immunogen:</b>	MAPK1 / ERK2 / p42 antibody was raised against synthetic peptide from rat MAPK1 / ERK.
<b>Specificity:</b>	Peptide mapping to the carboxy terminus of rat ERK2
<b>Epitope:</b>	C-Terminus
<b>Reactivity:</b>	Rat, Human, Mouse
<b>Purification:</b>	Affinity purified
<b>Presentation:</b>	Phosphate-buffered solution, pH 7.2, 0.09% sodium azide, 50% glycerol, 0.1% gelatin.
<b>Recommended Storage:</b>	+4°C or -20°C, Avoid repeated freezing and thawing.
<b>Usage Summary:</b>	Immunohistochemistry: LS-B1633 was validated for use in immunohistochemistry on a panel of 21 formalin-fixed, paraffin-embedded (FFPE) human tissues after heat induced antigen retrieval in pH 6.0 citrate buffer. After incubation with the primary antibody, slides were incubated with biotinylated secondary antibody, followed by alkaline phosphatase-streptavidin and chromogen. The stained slides were evaluated by a pathologist to confirm staining specificity. The optimal working concentration for LS-B1633 was determined to be 1:50.
<b>Uses:</b>	IHC - Paraffin (1:50), Western blot, Immunoprecipitation (Optimal dilution to be determined by the researcher)
<b>Size:</b>	50 µl

**Immunohistochemistry Image:**



Anti-MAPK1 / ERK antibody IHC of human testis. Immunohistochemistry of formalin-fixed, paraffin-embedded tissue after heat-induced antigen retrieval. Antibody LS-B1633 dilution 1:50.

**Western Blot Image:**



Hela cell extract was resolved by electrophoresis, transferred to nitrocellulose, and probed with rabbit anti-ERK2 polyclonal antibody. Proteins were visualized using a donkey anti-rabbit secondary antibody conjugated to HRP and a chemiluminescence system.

**Requested From:**

Japan

Laboratory Reagent For In Vitro Research Use Only

Not for resale without prior written consent from LifeSpan BioSciences, Inc.

Created on 9/23/2014

© 2014 LifeSpan BioSciences