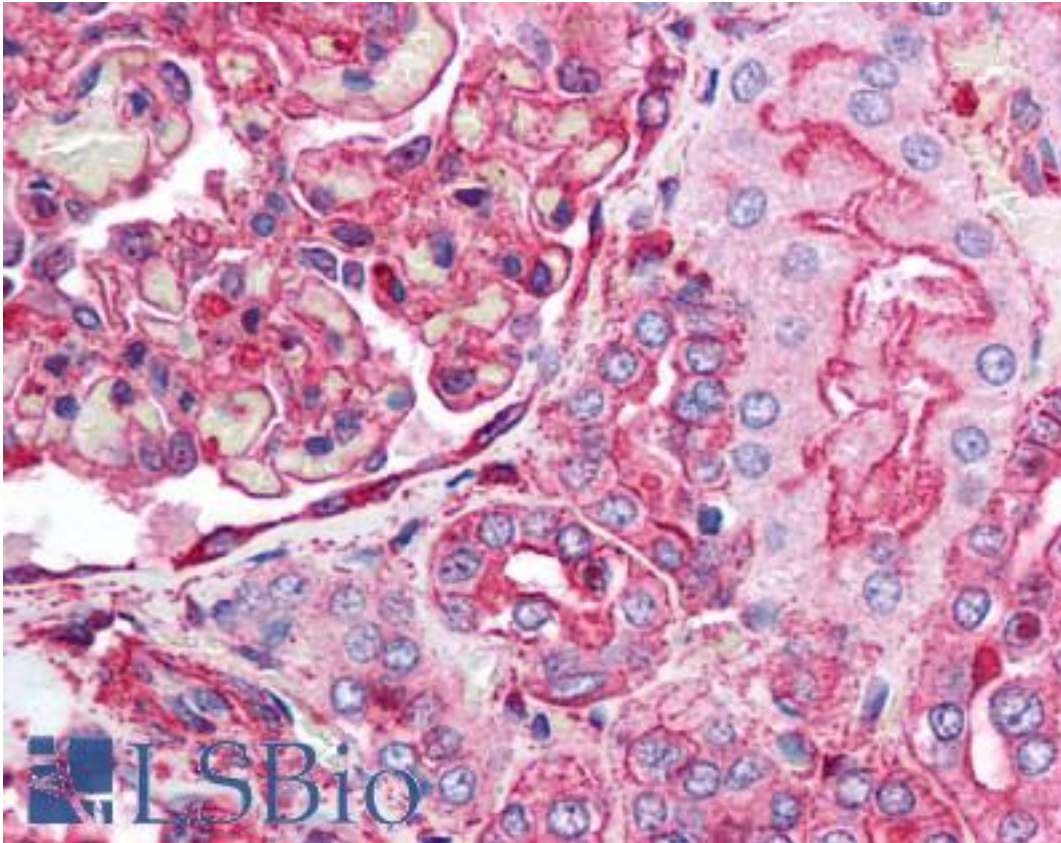


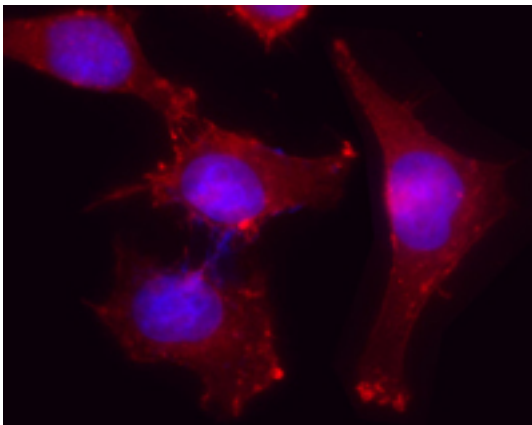
ACTB / Beta Actin Rabbit anti-Mouse Polyclonal (N-Terminus) Antibody - LS-B1625 - LSBio	
CatalogID:	LS-B1625
Validation:	This antibody replaces catalog number LS-C41293. It has been validated for use in the following assays: IHC.
Target:	actin, beta (ACTB)
Synonyms:	ACTB Antibody, Actin, cytoplasmic 1 Antibody, Beta-actin Antibody, Beta actin Antibody, BRWS1 Antibody, Actin, beta Antibody, Beta cytoskeletal actin Antibody, PS1TP5-binding protein 1 Antibody, PS1TP5BP1 Antibody
Host	ACTB antibody was produced in Rabbit
Clonality:	Polyclonal
Isotype:	IgG
Immunogen Species:	ACTB / Beta Actin antibody was raised against Mouse
Antigen Type:	Synthetic peptide
Immunogen:	ACTB / Beta Actin antibody was raised against synthetic peptide from mouse ACTB / Beta-actin.
Specificity:	Peptide-KLH, NH2 terminus
Epitope:	N-Terminus
Reactivity:	Mouse, Human, Rat
Purification:	Affinity purified
Presentation:	Phosphate-buffered solution, pH 7.2, 0.09% sodium azide, 50% glycerol.
Recommended Storage:	+4°C or -20°C, Avoid repeated freezing and thawing.
Usage Summary:	Immunohistochemistry: LS-B1625 was validated for use in immunohistochemistry on a panel of 21 formalin-fixed, paraffin-embedded (FFPE) human tissues after heat induced antigen retrieval in pH 6.0 citrate buffer. After incubation with the primary antibody, slides were incubated with biotinylated secondary antibody, followed by alkaline phosphatase-streptavidin and chromogen. The stained slides were evaluated by a pathologist to confirm staining specificity. The optimal working concentration for LS-B1625 was determined to be 1:100.
Uses:	IHC - Paraffin (1:100), Western blot (Optimal dilution to be determined by the researcher)
Size:	50 µl

Immunohistochemistry Image:



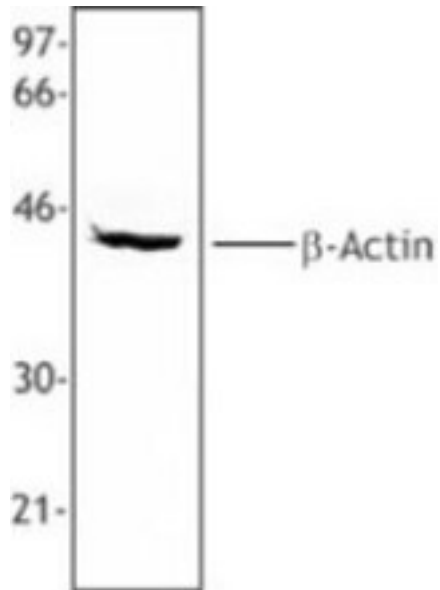
Anti-Beta Actin antibody IHC of human kidney. Immunohistochemistry of formalin-fixed, paraffin-embedded tissue after heat-induced antigen retrieval. Antibody LS-B1625 dilution 1:100.

Immunocytochemistry Image:



Immunofluorescent microscope analysis of HeLa cells using Poly6221, followed by Rhodamine Red-X goat anti-rabbit IgG and DAPI.

Western Blot Image:



Hela cell extract was western blotted with Poly6221. Proteins were visualized using a HRP donkey anti-rabbit antibody and a chemiluminescence detection system.

Requested From:

Japan

Laboratory Reagent For In Vitro Research Use Only

Not for resale without prior written consent from LifeSpan BioSciences, Inc.

Created on 9/23/2014

© 2014 LifeSpan BioSciences