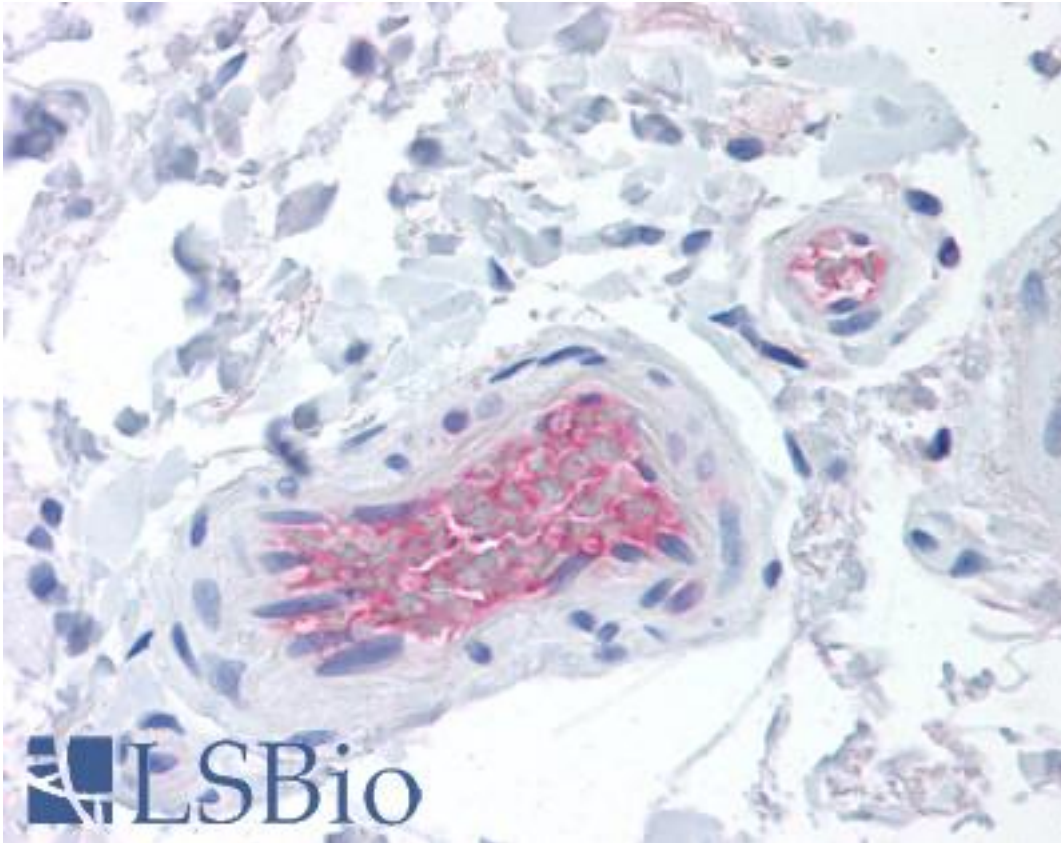


CFI / Complement Factor I Mouse anti-Human Monoclonal (OX-21) Antibody - LS-B1620 - LSBio	
CatalogID:	LS-B1620
Validation:	This antibody replaces catalog number LS-C34559. It has been validated for use in the following assays: IHC.
Target:	complement factor I (CFI)
Synonyms:	CFI Antibody, AHUS3 Antibody, C3BINA Antibody, C3b-inactivator Antibody, C3B/C4B inactivator Antibody, Complement component I Antibody, Complement component factor i Antibody, Factor I Antibody, FI Antibody, KAF Antibody, I factor Antibody, I factor (complement) Antibody, C3b-INA Antibody, Complement factor I Antibody, Light chain of factor I Antibody
Family / Subfamily:	Protease / Serine S1
Host	CFI antibody was produced in Mouse
Clonality:	Monoclonal
Isotype:	IgG1
Clone Name:	OX-21
Immunogen Species:	CFI / Complement Factor I antibody was raised against Human
Antigen Type:	Purified protein
Immunogen:	CFI / Complement Factor I antibody was raised against human complement factor I
Specificity:	Purified human Complement Factor 1
Reactivity:	Human
Purification:	Protein G purified
Presentation:	PBS, 0.02% sodium azide. Sourced in Ascites.
Recommended Storage:	Store at 4°C for short term applications. For long term storage, aliquot and store at -20°C.
Usage Summary:	Immunohistochemistry: LS-B1620 was validated for use in immunohistochemistry on a panel of 21 formalin-fixed, paraffin-embedded (FFPE) human tissues after heat induced antigen retrieval in pH 6.0 citrate buffer. After incubation with the primary antibody, slides were incubated with biotinylated secondary antibody, followed by alkaline phosphatase-streptavidin and chromogen. The stained slides were evaluated by a pathologist to confirm staining specificity. The optimal working concentration for LS-B1620 was determined to be 20 ug/ml.
Uses:	IHC - Paraffin (20 µg/ml), Western blot, Immunoprecipitation, Flow Cytometry, ELISA (Optimal dilution to be determined by the researcher)
Size:	50 µg
Concentration:	1 mg/ml

Immunohistochemistry Image:



Anti-Factor I antibody IHC of human colon, vessels. Immunohistochemistry of formalin-fixed, paraffin-embedded tissue after heat-induced antigen retrieval. Antibody LS-B1620 concentration 20 ug/ml.

Requested From:

Japan

Laboratory Reagent For In Vitro Research Use Only

Not for resale without prior written consent from LifeSpan BioSciences, Inc.

Created on 9/23/2014

© 2014 LifeSpan BioSciences