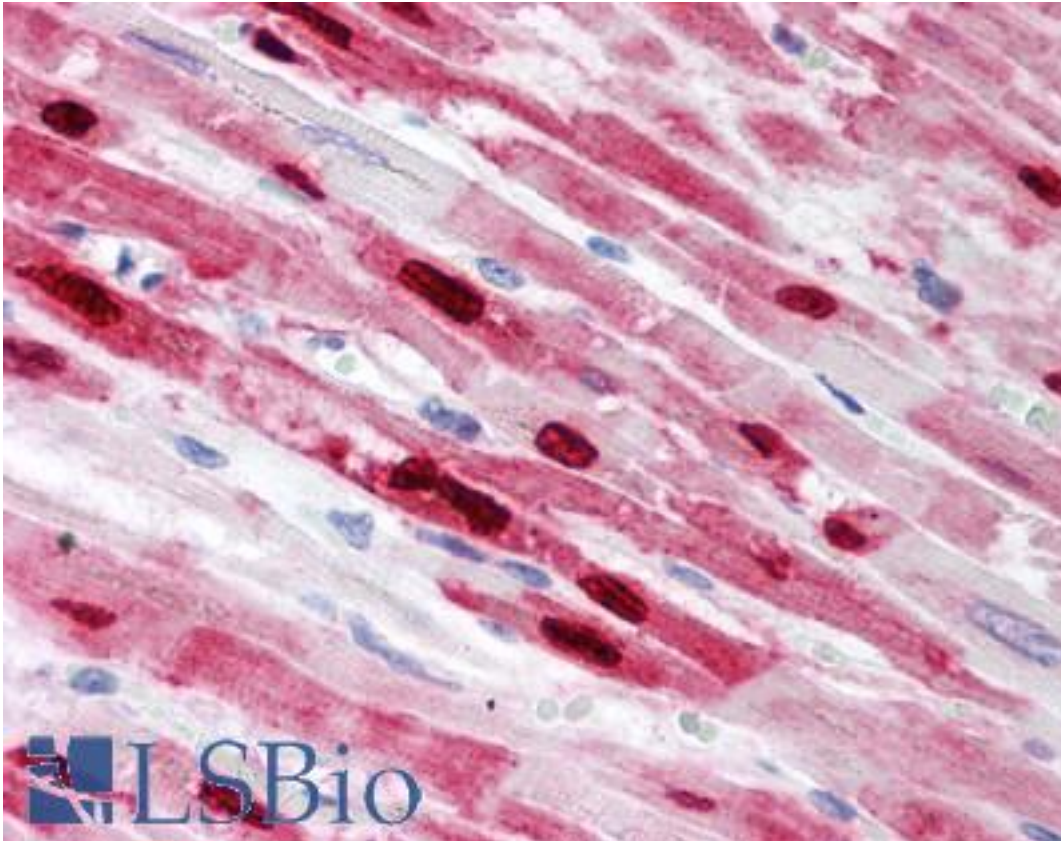


SPLA2 / PLA2 Mouse anti-Human Monoclonal Antibody - LS-B1614 - LSBio	
CatalogID:	LS-B1614
Validation:	This antibody replaces catalog number LS-C11699. It has been validated for use in the following assays: IHC.
Target:	phospholipase A2, group IIA (platelets, synovial fluid) (PLA2G2A)
Synonyms:	PLA2G2A Antibody, GIIC sPLA2 Antibody, Group IIA phospholipase A2 Antibody, MOM1 Antibody, PLA2L Antibody, PLA2S Antibody, NPS-PLA2 Antibody, PLAS1 Antibody, PLA2 Antibody, PLA2B Antibody, RASF-A Antibody, SPLA2 Antibody
Family / Subfamily:	Phospholipase / not assigned-Phospholipase
Host	PLA2G2A antibody was produced in Mouse
Clonality:	Monoclonal
Isotype:	IgG1
Immunogen Species:	SPLA2 / PLA2 antibody was raised against Human
Immunogen:	SPLA2 / PLA2 antibody was raised against recombinant human PLA2G2A.
Specificity:	Recombinant human sPLA2 Type IIA
Reactivity:	Human
Purification:	Ammonium sulfate precipitation
Presentation:	PBS, pH 7.4, 0.5% mg/ml BSA, 0.02% sodium azide, 50% glycerol.
Recommended Storage:	+4°C or -20°C, Avoid repeated freezing and thawing.
Usage Summary:	Immunohistochemistry: LS-B1614 was validated for use in immunohistochemistry on a panel of 21 formalin-fixed, paraffin-embedded (FFPE) human tissues after heat induced antigen retrieval in pH 6.0 citrate buffer. After incubation with the primary antibody, slides were incubated with biotinylated secondary antibody, followed by alkaline phosphatase-streptavidin and chromogen. The stained slides were evaluated by a pathologist to confirm staining specificity. The optimal working concentration for LS-B1614 was determined to be 5 mg/ml.
Uses:	IHC - Paraffin (5 µg/ml), Western blot, Immunoprecipitation (Optimal dilution to be determined by the researcher)
Size:	50 µg
Concentration:	1 mg/ml

Immunohistochemistry Image:



Anti-PLA2G2A antibody IHC of human heart. Immunohistochemistry of formalin-fixed, paraffin-embedded tissue after heat-induced antigen retrieval. Antibody LS-B1614 concentration 5 ug/ml.

Western Blot Image:



Western blot of SPLA2 / PLA2 antibody LS-B1614.

Requested From:

Japan

Laboratory Reagent For In Vitro Research Use Only

Not for resale without prior written consent from LifeSpan BioSciences, Inc.

Created on 9/23/2014

© 2014 LifeSpan BioSciences