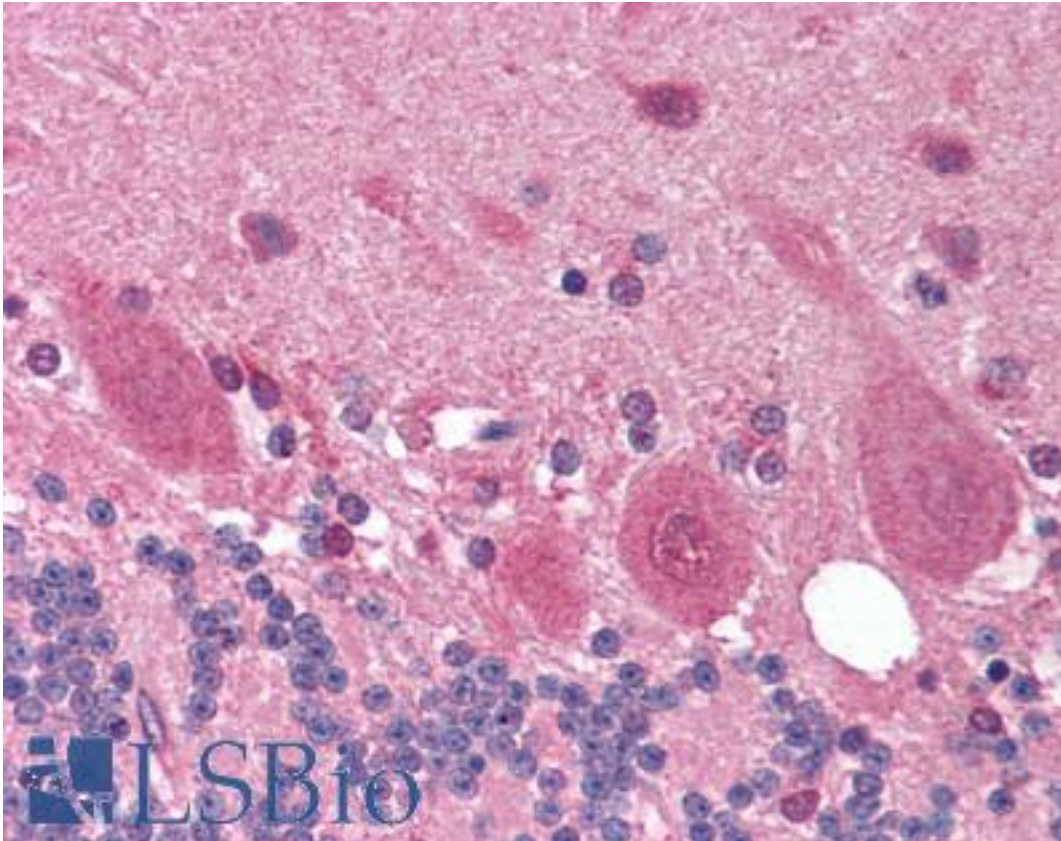


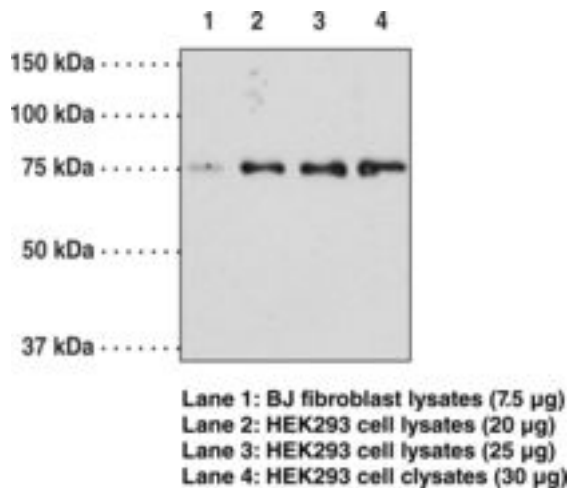
OPTN / Optineurin Rabbit anti-Human Polyclonal (aa575-591) Antibody - LS-B1611 - LSBio	
CatalogID:	LS-B1611
Validation:	This antibody replaces catalog number LS-C11174. It has been validated for use in the following assays: IHC.
Target:	optineurin (OPTN)
Synonyms:	OPTN Antibody, ALS12 Antibody, E3-14.7K-interacting protein Antibody, FIP-2 Antibody, HIP-7 Antibody, HYPL Antibody, Huntingtin yeast partner L Antibody, HIP7 Antibody, TFIIIA-INTP Antibody, NEMO-related protein Antibody, NRP Antibody, Optineurin Antibody, FIP2 Antibody, GLC1E Antibody
Host	OPTN antibody was produced in Rabbit
Clonality:	Polyclonal
Isotype:	IgG
Immunogen Species:	OPTN / Optineurin antibody was raised against Human
Immunogen:	OPTN / Optineurin antibody was raised against human, mouse, and rat (100% identity) optineurin amino acids 575-591 (GEVLPDIDTLQIHVMDC). Percent identity by BLAST analysis: Human, Gorilla, Orangutan, Gibbon, Monkey, Marmoset, Mouse, Rat, Dog, Bat, Elephant, Panda, Horse, Rabbit (100%); Hamster, Opossum (94%); Bovine, Pig, Platypus (88%); Turkey, Chicken, Lizard, Zebrafish (82%).
Specificity:	human, murine, and rat (100% identity) optineurin amino acids 575-591 (GEVLPDIDTLQIHVMDC)
Epitope:	aa575-591
Reactivity:	Human, Gorilla, Orangutan, Gibbon, Monkey, Mouse, Rat, Bat, Dog, Horse, Rabbit
Predicted Reactivity:	Hamster
Purification:	Immunoaffinity purified
Presentation:	TBS, pH 7.4, 0.5% BSA, 0.02% sodium azide, 50% glycerol.
Recommended Storage:	Long term: -20°C; Short term: +4°C. Avoid repeat freeze-thaw cycles.
Usage Summary:	Immunohistochemistry: LS-B1611 was validated for use in immunohistochemistry on a panel of 21 formalin-fixed, paraffin-embedded (FFPE) human tissues after heat induced antigen retrieval in pH 6.0 citrate buffer. After incubation with the primary antibody, slides were incubated with biotinylated secondary antibody, followed by alkaline phosphatase-streptavidin and chromogen. The stained slides were evaluated by a pathologist to confirm staining specificity. The optimal working concentration for LS-B1611 was determined to be 10 ug/ml.
Uses:	IHC - Paraffin (10 µg/ml), Western blot (Optimal dilution to be determined by the researcher)
Size:	50 µg
Concentration:	0.3 mg/ml

Immunohistochemistry Image:



Anti-Optineurin antibody IHC of human brain, cerebellum. Immunohistochemistry of formalin-fixed, paraffin-embedded tissue after heat-induced antigen retrieval. Antibody LS-B1611 concentration 10 ug/ml.

Western Blot Image:



Western blot of Optineurin antibody LS-B1611.

Requested From:

Japan

Laboratory Reagent For In Vitro Research Use Only

Not for resale without prior written consent from LifeSpan BioSciences, Inc.

Created on 9/23/2014

© 2014 LifeSpan BioSciences