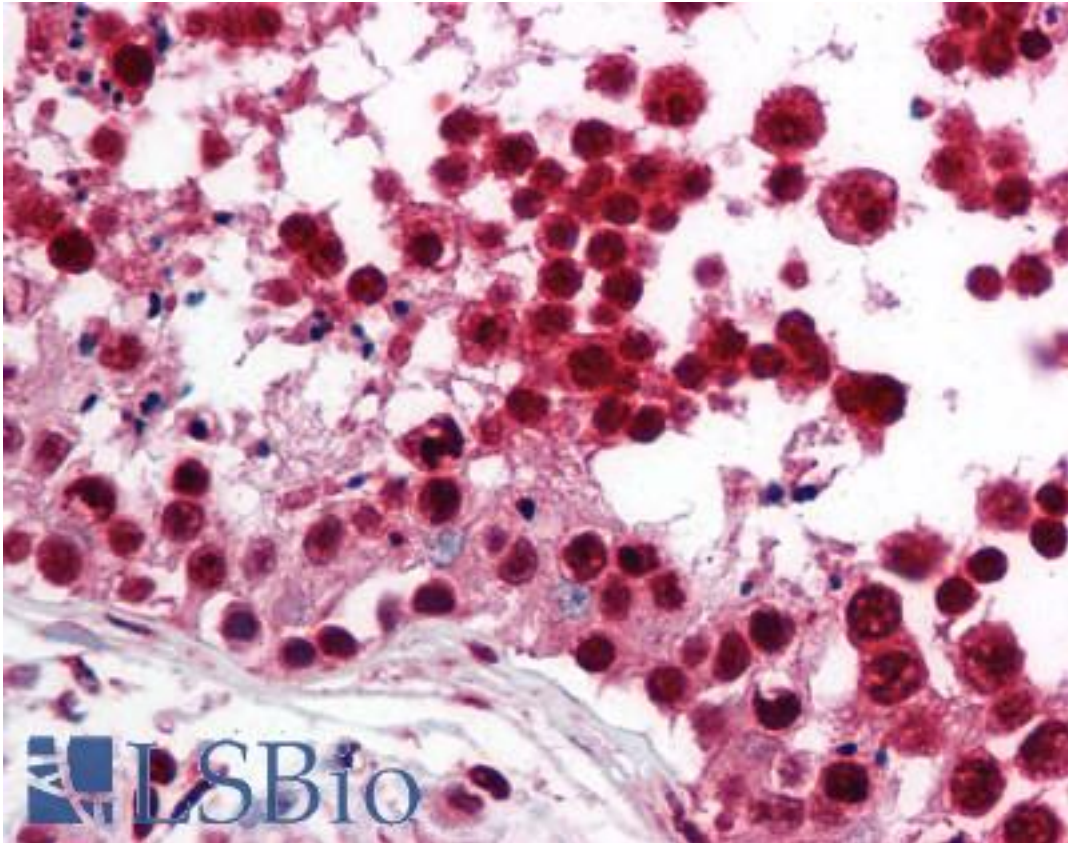


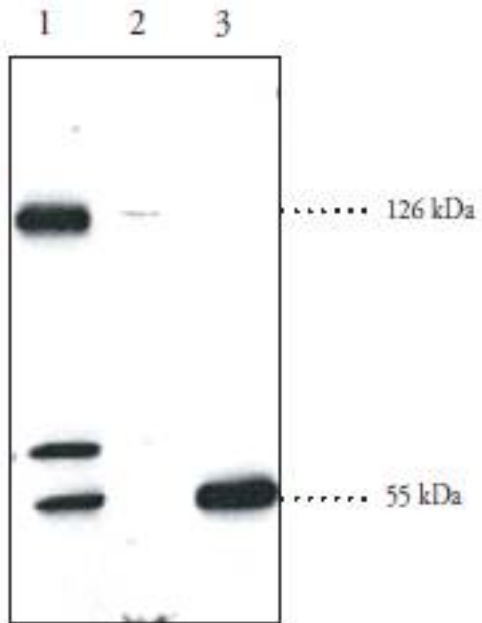
SREBF2 / SREBP2 Rabbit anti-Human Polyclonal (aa455-469) Antibody - LS-B1609 - LSBio	
CatalogID:	LS-B1609
Validation:	This antibody replaces catalog number LS-C11180. It has been validated for use in the following assays: IHC.
Target:	sterol regulatory element binding transcription factor 2 (SREBF2)
Synonyms:	SREBF2 Antibody, SREBP2 Antibody, SREBP-2 Antibody, BHLHd2 Antibody
Host	SREBF2 antibody was produced in Rabbit
Clonality:	Polyclonal
Isotype:	IgG
Immunogen Species:	SREBF2 / SREBP2 antibody was raised against Human
Immunogen:	SREBF2 / SREBP2 antibody was raised against human SREBP-2 amino acids 455-469 (SPLLDDAKVKDEPDS). Percent identity by BLAST analysis: Human, Gorilla, Gibbon, Monkey, Mouse, Rat, Dog, Bovine, Hamster, Elephant, Panda, Horse, Pig, Turkey, Chicken, Platypus, Lizard (100%); Bat, Xenopus (93%).
Specificity:	human SREBP-2 amino acids 455-469 (SPLLDDAKVKDEPDS)
Epitope:	aa455-469
Reactivity:	Human, Gorilla, Gibbon, Monkey, Mouse, Rat, Bovine, Dog, Hamster, Horse, Pig, Chicken
Predicted Reactivity:	Bat, Xenopus
Purification:	Affinity purified
Presentation:	Tris buffered saline.
Recommended Storage:	Long term: -20°C; Short term: +4°C. Avoid repeat freeze-thaw cycles.
Usage Summary:	Immunohistochemistry: LS-B1609 was validated for use in immunohistochemistry on a panel of 21 formalin-fixed, paraffin-embedded (FFPE) human tissues after heat induced antigen retrieval in pH 6.0 citrate buffer. After incubation with the primary antibody, slides were incubated with biotinylated secondary antibody, followed by alkaline phosphatase-streptavidin and chromogen. The stained slides were evaluated by a pathologist to confirm staining specificity. The optimal working concentration for LS-B1609 was determined to be 5 ug/ml.
Uses:	IHC - Paraffin (5 µg/ml), ICC, Western blot (Optimal dilution to be determined by the researcher)
Size:	50 µg
Concentration:	0.4 mg/ml

Immunohistochemistry Image:



Anti-SREBP-2 antibody IHC of human testis. Immunohistochemistry of formalin-fixed, paraffin-embedded tissue after heat-induced antigen retrieval. Antibody LS-B1609 concentration 5 ug/ml.

Western Blot Image:



Lane 1: Human fibroblast cell lysate (60 ug); Lane 2: Rat brown fat homogenate (60 ug); Lane 3: Rat testis supernatant (60 ug)

Requested From:

Japan

Laboratory Reagent For In Vitro Research Use Only

Not for resale without prior written consent from LifeSpan BioSciences, Inc.

Created on 9/23/2014

© 2014 LifeSpan BioSciences