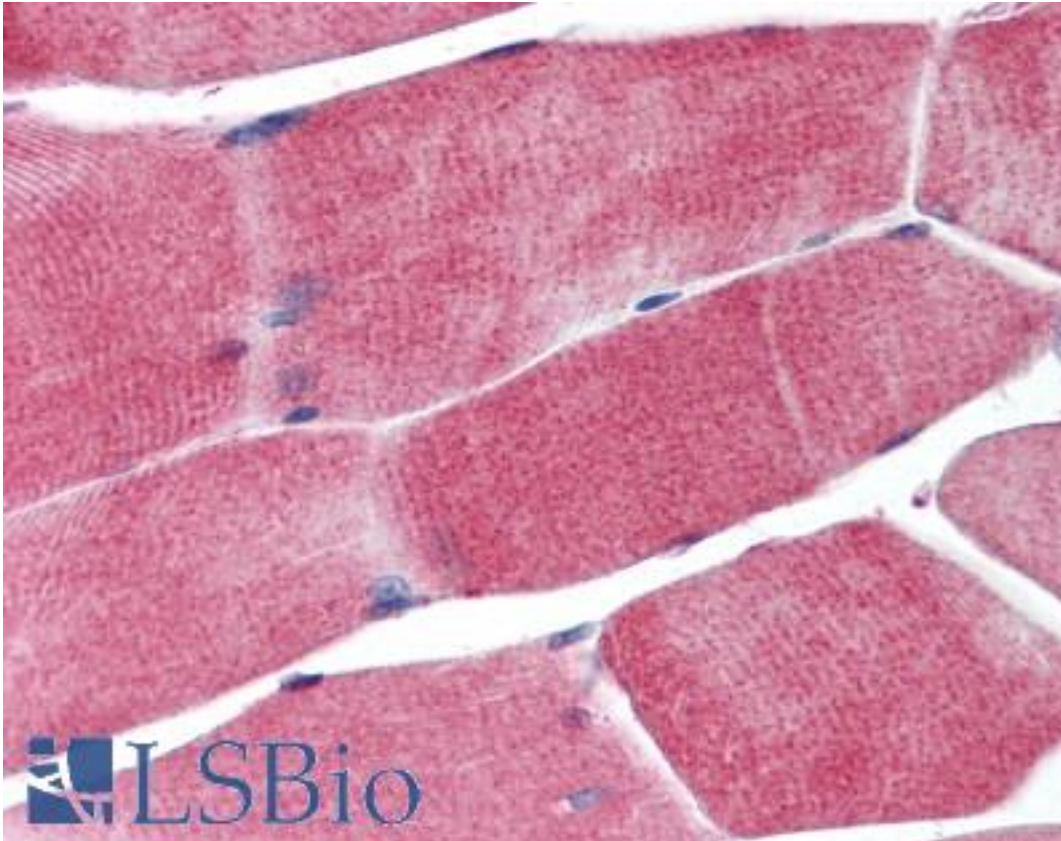


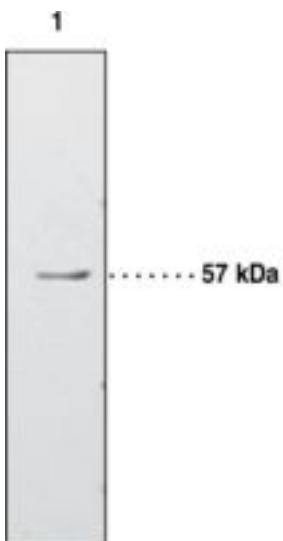
PPARG / PPAR Gamma Rabbit anti-Human Polyclonal (aa82-101) Antibody - LS-B1606 - LSBio	
CatalogID:	LS-B1606
Validation:	This antibody replaces catalog number LS-C11181. It has been validated for use in the following assays: IHC.
Target:	peroxisome proliferator-activated receptor gamma (PPARG)
Synonyms:	PPARG Antibody, NR1C3 Antibody, PPAR gamma Antibody, PPAR gamma 2 Antibody, PPARG1 Antibody, PPARG2 Antibody, PPARgamma Antibody, CIMT1 Antibody, GLM1 Antibody, PPAR-gamma Antibody
Family / Subfamily:	NHR / NR1 Thyroid hormone-like
Host	PPARG antibody was produced in Rabbit
Clonality:	Polyclonal
Isotype:	IgG
Immunogen Species:	PPARG / PPAR Gamma antibody was raised against Human
Immunogen:	PPARG / PPAR Gamma antibody was raised against human PPAR1 amino acids 82-101 (PASPPYYSEKTQLYNKPHEE). Percent identity by BLAST analysis: Human, Gorilla, Orangutan, Gibbon, Monkey, Cat, Dog, Elephant, Panda (100%); Marmoset, Mouse, Rat, Bat, Hamster, Rabbit, Pig, Opossum (95%); Sheep, Bovine, Goat, Horse (90%); Turkey, Chicken (85%); Platypus, Trachemys (80%).
Specificity:	Human PPAR gamma 1 amino acids 82-101 (PASPPYYSEKTQLYNKPHEE; amino acids 110-129 of PPAR gamma 2)1
Epitope:	aa82-101
Reactivity:	Human, Gorilla, Orangutan, Gibbon, Dog
Predicted Reactivity:	Monkey, Mouse, Rat, Bat, Bovine, Goat, Hamster, Horse, Pig, Rabbit, Sheep
Purification:	Immunoaffinity purified
Presentation:	TBS, 50% glycerol, 0.5 mg/ml BSA, 0.02% sodium azide.
Recommended Storage:	Long term: -20°C; Short term: +4°C. Avoid repeat freeze-thaw cycles.
Usage Summary:	Immunohistochemistry: LS-B1606 was validated for use in immunohistochemistry on a panel of 21 formalin-fixed, paraffin-embedded (FFPE) human tissues after heat induced antigen retrieval in pH 6.0 citrate buffer. After incubation with the primary antibody, slides were incubated with biotinylated secondary antibody, followed by alkaline phosphatase-streptavidin and chromogen. The stained slides were evaluated by a pathologist to confirm staining specificity. The optimal working concentration for LS-B1606 was determined to be 5 ug/ml.
Uses:	IHC - Paraffin (5 µg/ml), Western blot (Optimal dilution to be determined by the researcher)
Size:	50 µg
Concentration:	0.6 mg/ml

Immunohistochemistry Image:



Anti-PPARG antibody IHC of human skeletal muscle. Immunohistochemistry of formalin-fixed, paraffin-embedded tissue after heat-induced antigen retrieval. Antibody LS-B1606 concentration 5 ug/ml.

Western Blot Image:



Lane 1: Rat adipose homogenate (30 µg)

Western blot of PPARG / PPAR Gamma antibody LS-B1606.

Requested From:

Japan

Laboratory Reagent For In Vitro Research Use Only

Not for resale without prior written consent from LifeSpan BioSciences, Inc.

Created on 9/23/2014

© 2014 LifeSpan BioSciences