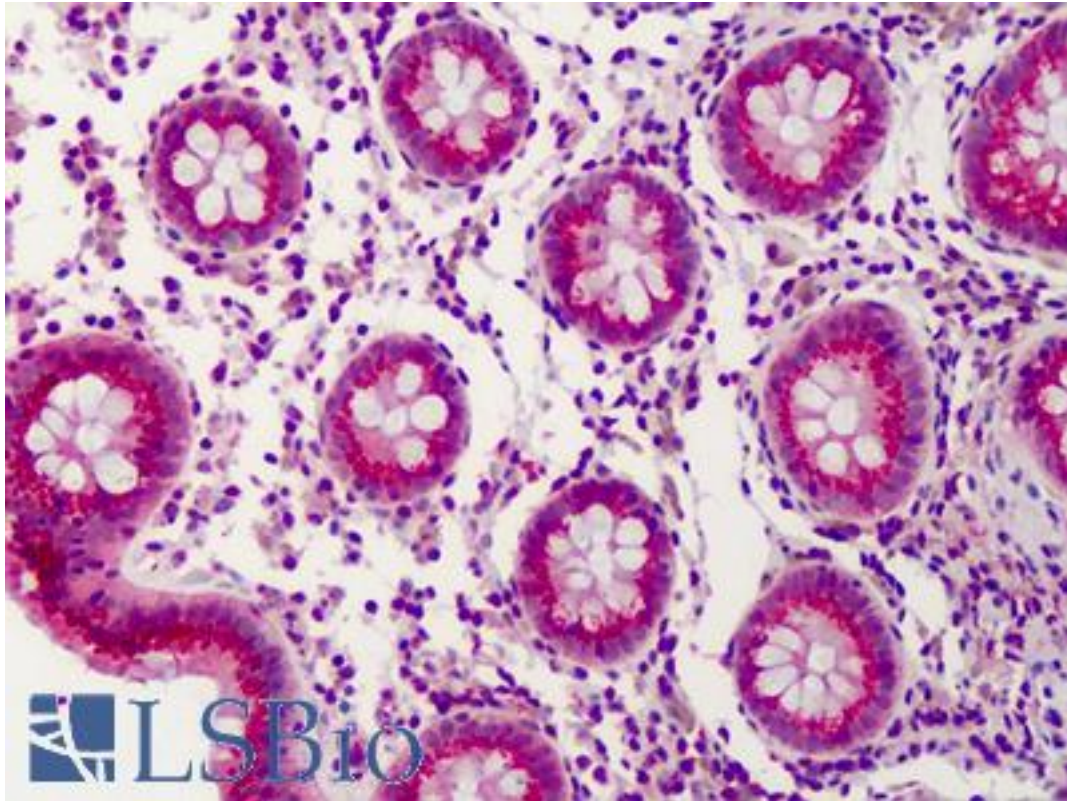


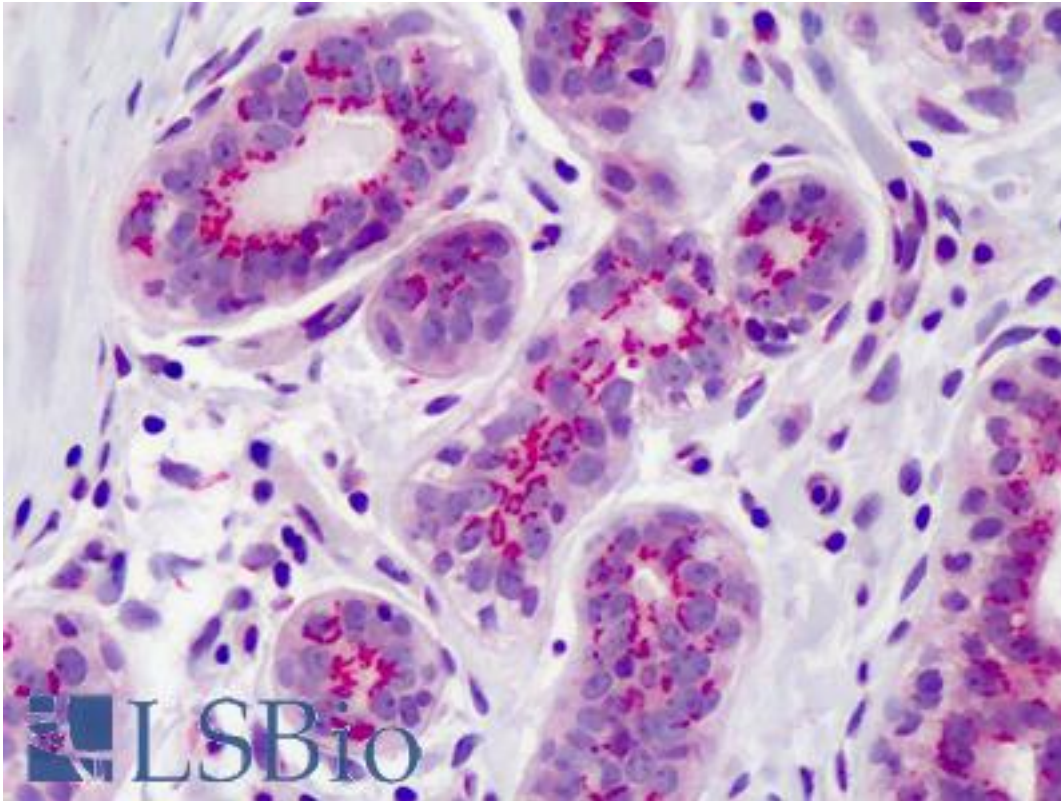
PPARD / PPAR Delta Rabbit anti-Human Polyclonal (aa39-54) Antibody - LS-B1605 - LSBio	
CatalogID:	LS-B1605
Validation:	This antibody replaces catalog number LS-C11183. It has been validated for use in the following assays: IHC.
Target:	peroxisome proliferator-activated receptor delta (PPARD)
Synonyms:	PPARD Antibody, FAAR Antibody, NUCI Antibody, PPAR-beta Antibody, PPAR-delta Antibody, NR1C2 Antibody, NUC1 Antibody, NUCII Antibody, Nuclear hormone receptor 1 Antibody, PPARB Antibody, PPAR Delta Antibody
Family / Subfamily:	NHR / NR1 Thyroid hormone-like
Host	PPARD antibody was produced in Rabbit
Clonality:	Polyclonal
Isotype:	IgG
Immunogen Species:	PPARD / PPAR Delta antibody was raised against Human
Immunogen:	PPARD / PPAR Delta antibody was raised against human PPAR amino acids 39-54 (SSSYTDLRSRSSPSSL). Percent identity by BLAST analysis: Human, Gibbon, Monkey, Marmoset, Dog (100%); Bat, Horse (94%); Rabbit, Opossum, Turkey, Chicken (88%); Bovine, Elephant, Medaka (81%).
Specificity:	Human PPAR delta amino acids 39-54 (SSSYTDLRSRSSPSSL)
Epitope:	aa39-54
Reactivity:	Human, Gibbon, Monkey, Dog
Predicted Reactivity:	Bat, Horse
Purification:	Immunoaffinity purified
Reconstitution:	500ul sterile ddH2O
Presentation:	Lyophilized, TBS, pH 7.6, 5 mg/ml BSA
Recommended Storage:	Long term: -20°C; Short term: +4°C. Avoid repeat freeze-thaw cycles.
Usage Summary:	Immunohistochemistry: LS-B1605 was validated for use in immunohistochemistry on a panel of 21 formalin-fixed, paraffin-embedded (FFPE) human tissues after heat induced antigen retrieval in pH 6.0 citrate buffer. After incubation with the primary antibody, slides were incubated with biotinylated secondary antibody, followed by alkaline phosphatase-streptavidin and chromogen. The stained slides were evaluated by a pathologist to confirm staining specificity. The optimal working concentration for LS-B1605 was determined to be 5 ug/ml.
Uses:	IHC - Paraffin (5 µg/ml), ICC, Western blot (Optimal dilution to be determined by the researcher)
Size:	1 ea
Concentration:	0.6 mg/ml (after resuspension)

Immunohistochemistry Image:



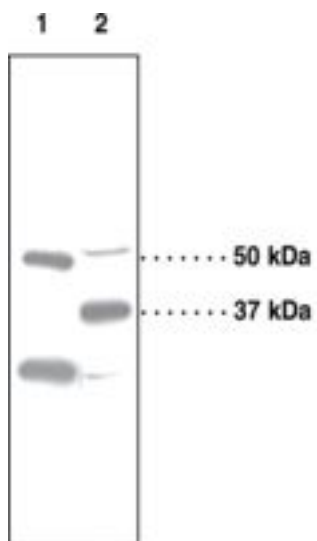
Anti-PPAR Delta antibody IHC of human colon. Immunohistochemistry of formalin-fixed, paraffin-embedded tissue after heat-induced antigen retrieval. Antibody LS-B1605 concentration 5 ug/ml.

Immunohistochemistry Image:



Anti-PPAR Delta antibody IHC of human breast. Immunohistochemistry of formalin-fixed, paraffin-embedded tissue after heat-induced antigen retrieval. Antibody LS-B1605 concentration 5 ug/ml.

Western Blot Image:



Lane 1: Human cerebral cortex (30 µg)

Lane 2: Mouse liver (30 µg)

Western blot of PPARD / PPAR Delta antibody LS-B1605.

Requested From:

Japan

Laboratory Reagent For In Vitro Research Use Only

Not for resale without prior written consent from LifeSpan BioSciences, Inc.

Created on 9/23/2014

© 2014 LifeSpan BioSciences