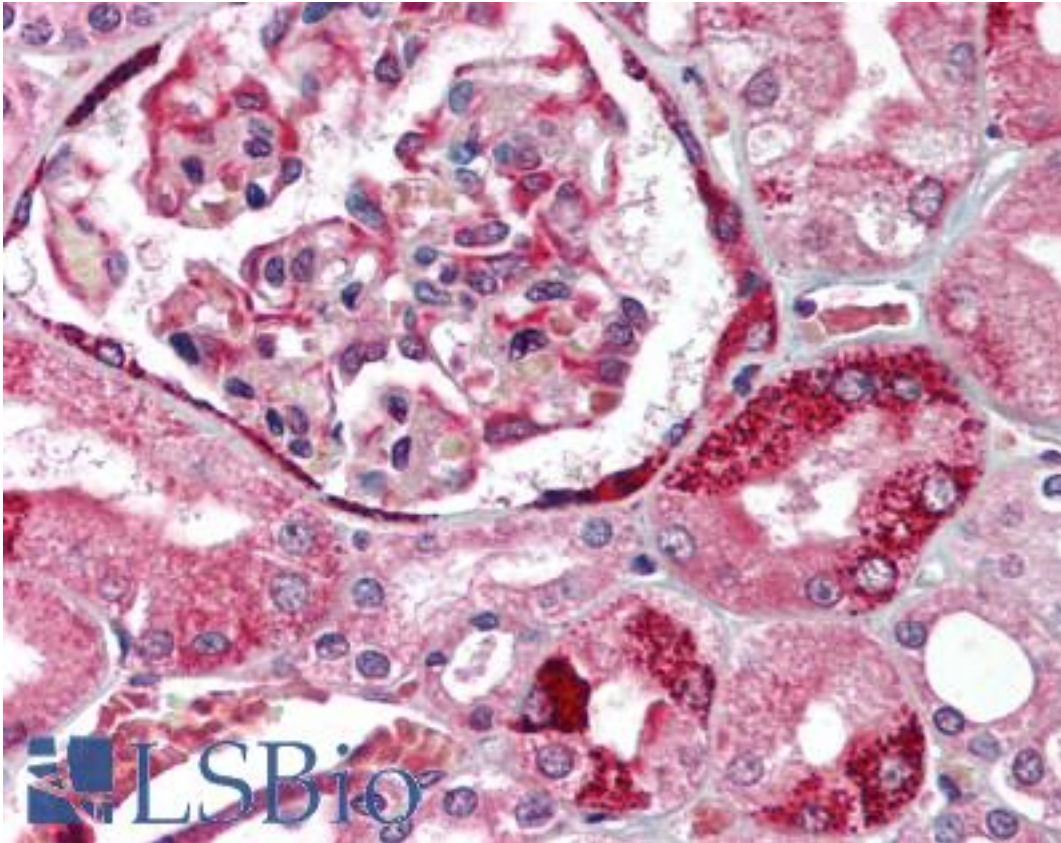


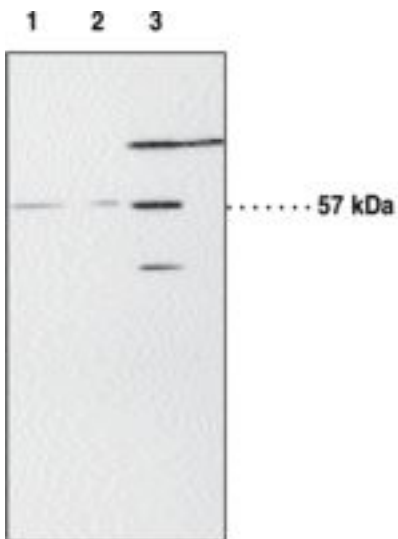
PPAR Alpha Rabbit anti-Human Polyclonal (aa22-36) Antibody - LS-B1604 - LSBio	
CatalogID:	LS-B1604
Validation:	This antibody replaces catalog number LS-C11182. It has been validated for use in the following assays: IHC.
Target:	peroxisome proliferator-activated receptor alpha (PPARA)
Synonyms:	PPARA Antibody, PPAR Alpha Antibody, PPARalpha Antibody, PPAR-alpha Antibody, NR1C1 Antibody, HPPAR Antibody, PPAR Antibody
Family / Subfamily:	NHR / NR1 Thyroid hormone-like
Host	PPARA antibody was produced in Rabbit
Clonality:	Polyclonal
Isotype:	IgG
Immunogen Species:	PPAR Alpha antibody was raised against Human
Immunogen:	PPAR Alpha antibody was raised against human, mouse, and rat amino acids 22-36 (PLSEEFLLQEMGNIQE). Percent identity by BLAST analysis: Human, Gorilla, Monkey, Marmoset, Mouse, Rat, Dog, Hamster, Elephant (100%); Gibbon, Bovine, Panda, Horse, Rabbit, Pig (93%); Bat, Opossum (87%); Goat, Guinea pig (80%).
Specificity:	Human, murine, and rat amino acids 22-36 (PLSEEFLLQEMGNIQE) ^{1,2,3}
Epitope:	aa22-36
Reactivity:	Human, Gorilla, Monkey, Mouse, Rat, Dog, Hamster
Predicted Reactivity:	Gibbon, Bovine, Horse, Pig, Rabbit
Purification:	Immunoaffinity purified
Presentation:	Tris buffered saline, 0.1% BSA, 0.02% sodium azide.
Recommended Storage:	Long term: -20°C; Short term: +4°C. Avoid repeat freeze-thaw cycles.
Usage Summary:	Immunohistochemistry: LS-B1604 was validated for use in immunohistochemistry on a panel of 21 formalin-fixed, paraffin-embedded (FFPE) human tissues after heat induced antigen retrieval in pH 6.0 citrate buffer. After incubation with the primary antibody, slides were incubated with biotinylated secondary antibody, followed by alkaline phosphatase-streptavidin and chromogen. The stained slides were evaluated by a pathologist to confirm staining specificity. The optimal working concentration for LS-B1604 was determined to be 5 ug/ml.
Uses:	IHC - Paraffin (5 ug/ml), Western blot (Optimal dilution to be determined by the researcher)
Size:	50 ug
Concentration:	0.5 mg/ml

Immunohistochemistry Image:



Anti-PPAR Alpha antibody IHC of human kidney. Immunohistochemistry of formalin-fixed, paraffin-embedded tissue after heat-induced antigen retrieval. Antibody LS-B1604 concentration 5 ug/ml.

Western Blot Image:



Lane 1: Baboon myometrium (100 µg)
Lane 2: Baboon myometrium (50 µg)
Lane 3: K-562 cell lysate (75 µg)

Western blot of PPAR Alpha antibody LS-B1604.

Requested From:	Japan
Laboratory Reagent For In Vitro Research Use Only	
Not for resale without prior written consent from LifeSpan BioSciences, Inc.	
Created on 9/23/2014	
© 2014 LifeSpan BioSciences	