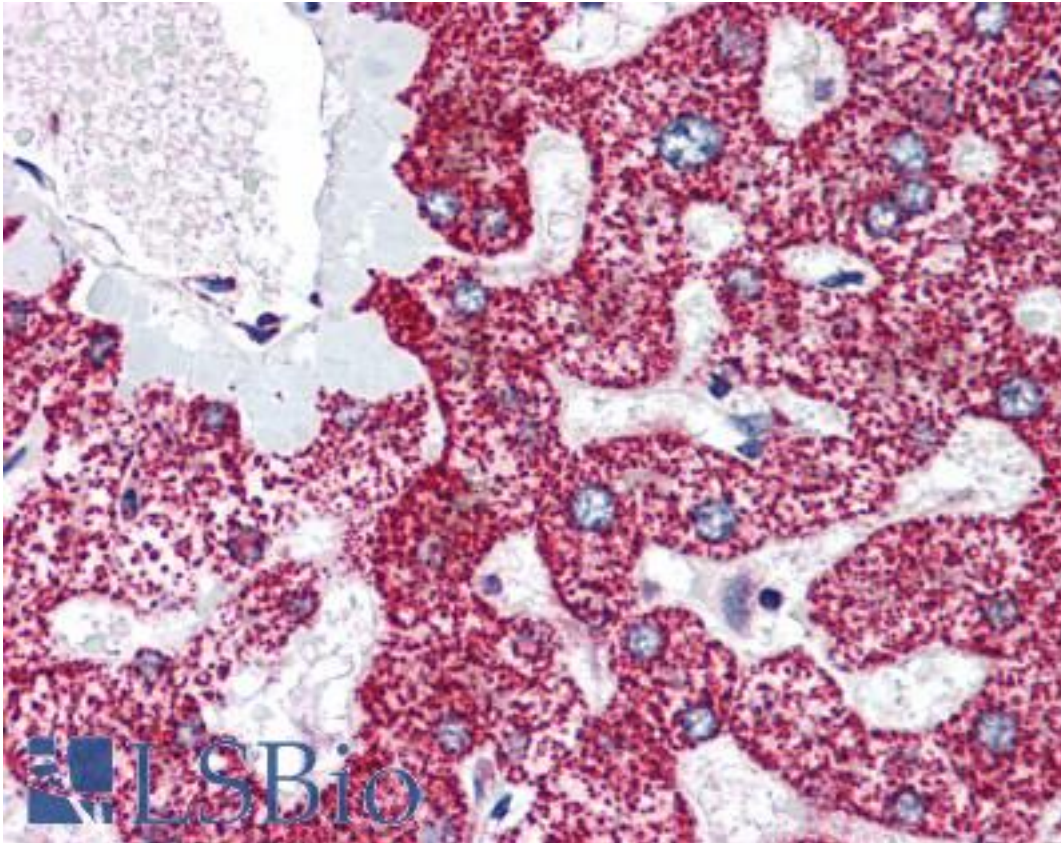


LIPG / Endothelial Lipase Rabbit anti-Human Polyclonal (aa19-32) Antibody - LS-B1599 - LSBio	
CatalogID:	LS-B1599
Validation:	This antibody replaces catalog number LS-C11176. It has been validated for use in the following assays: IHC.
Target:	lipase, endothelial (LIPG)
Synonyms:	LIPG Antibody, EDL Antibody, EL Antibody, Lipoprotein lipase H Antibody, Lipase, endothelial Antibody, PRO719 Antibody, Endothelial lipase Antibody
Host	LIPG antibody was produced in Rabbit
Clonality:	Polyclonal
Isotype:	IgG
Immunogen Species:	LIPG / Endothelial Lipase antibody was raised against Human
Antigen Type:	Synthetic peptide
Immunogen:	LIPG / Endothelial Lipase antibody was raised against synthetic peptide from human LIPG.
Specificity:	human endothelial lipase amino acids 19-32
Epitope:	aa19-32
Reactivity:	Human, Mouse, Rat, Pig, Sheep
Purification:	Immunoaffinity purified
Presentation:	TBS, pH 7.4, 0.02% sodium azide, 0.5 mg/ml BSA, 50% glycerol.
Recommended Storage:	Long term: -20°C; Short term: +4°C. Avoid repeat freeze-thaw cycles.
Usage Summary:	Immunohistochemistry: LS-B1599 was validated for use in immunohistochemistry on a panel of 21 formalin-fixed, paraffin-embedded (FFPE) human tissues after heat induced antigen retrieval in pH 6.0 citrate buffer. After incubation with the primary antibody, slides were incubated with biotinylated secondary antibody, followed by alkaline phosphatase-streptavidin and chromogen. The stained slides were evaluated by a pathologist to confirm staining specificity. The optimal working concentration for LS-B1599 was determined to be 5 ug/ml.
Uses:	IHC - Paraffin (5 µg/ml), Western blot (Optimal dilution to be determined by the researcher)
Size:	50 µg
Concentration:	0.6 mg/ml

Immunohistochemistry Image:



Anti-LIPG antibody IHC of human liver. Immunohistochemistry of formalin-fixed, paraffin-embedded tissue after heat-induced antigen retrieval. Antibody LS-B1599 concentration 5 ug/ml.

Requested From:

Japan

Laboratory Reagent For In Vitro Research Use Only

Not for resale without prior written consent from LifeSpan BioSciences, Inc.

Created on 9/23/2014

© 2014 LifeSpan BioSciences