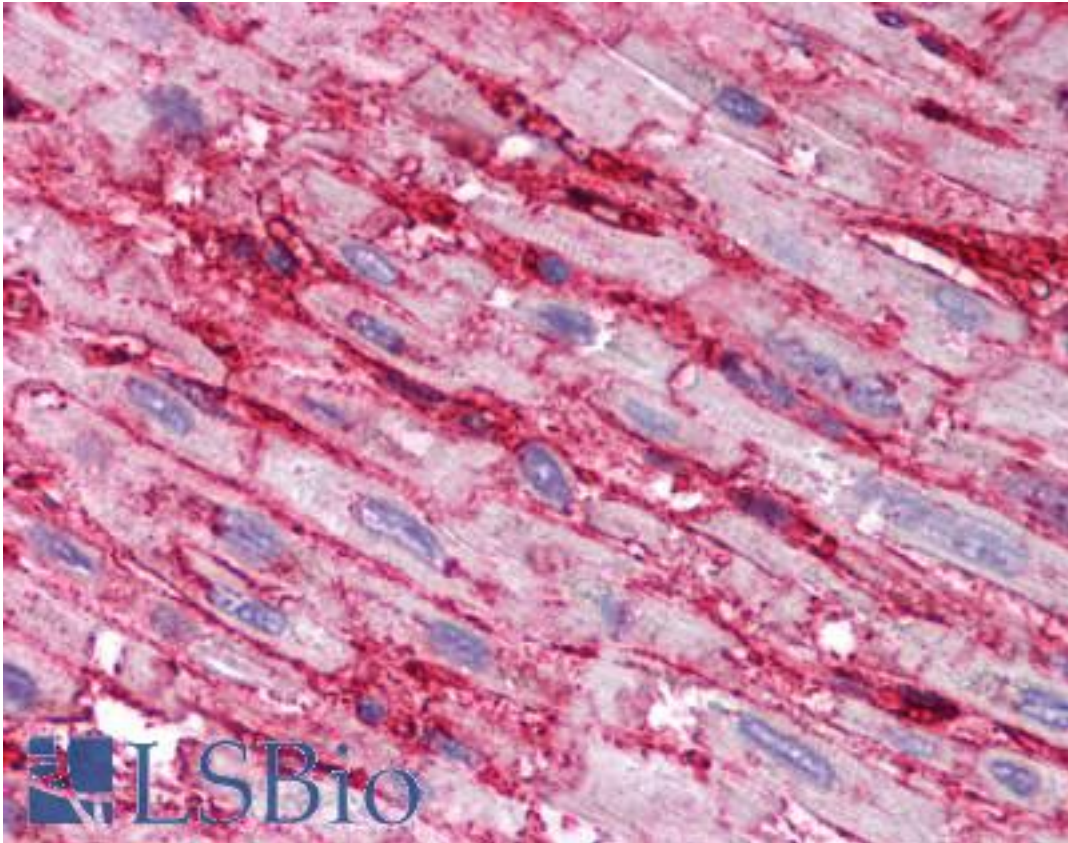


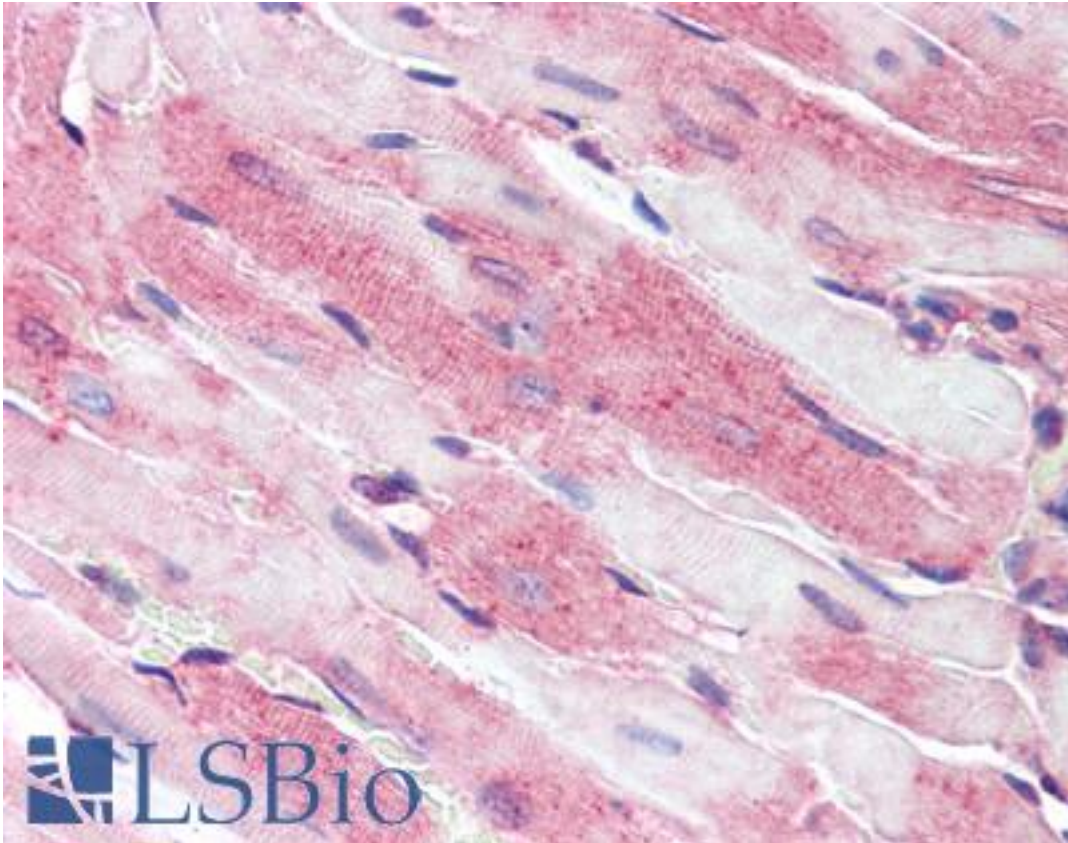
| CD36 Rabbit anti-Human Polyclonal (aa99-114) Antibody - LS-B1590 - LSBio | |
|--|--|
| CatalogID: | LS-B1590 |
| Validation: | This antibody replaces catalog number LS-C11184. It has been validated for use in the following assays: IHC. |
| Target: | CD36 molecule (thrombospondin receptor) |
| Synonyms: | CD36 Antibody, Cluster determinant 36 Antibody, FAT Antibody, Fatty acid translocase Antibody, Glycoprotein IIIb Antibody, gp4 Antibody, GPIIIB Antibody, GPIV Antibody, PAS-4 protein Antibody, PAS IV Antibody, PASIV Antibody, Platelet collagen receptor Antibody, Platelet glycoprotein IV Antibody, SCARB3 Antibody, Thrombospondin receptor Antibody, BDPLT10 Antibody, CD36 antigen Antibody, CHDS7 Antibody, gp3B Antibody, PAS-4 Antibody, Platelet glycoprotein 4 Antibody |
| Host | CD36 antibody was produced in Rabbit |
| Clonality: | Polyclonal |
| Isotype: | IgG |
| Immunogen Species: | CD36 antibody was raised against Human |
| Immunogen: | CD36 antibody was raised against human CD36 amino acids 99-114 (AKENVTQDAEDNTVSF). Percent identity by BLAST analysis: Human (100%); Gorilla, Gibbon, Marmoset (94%); Monkey, Mouse (81%). |
| Specificity: | human CD36 amino acids 99-114 (AKENVTQDAEDNTVSF) |
| Epitope: | aa99-114 |
| Reactivity: | Human, Mouse |
| Predicted Reactivity: | Gorilla, Gibbon, Monkey |
| Purification: | Immunoaffinity purified |
| Presentation: | TBS |
| Recommended Storage: | Long term: -20°C; Short term: +4°C. Avoid repeat freeze-thaw cycles. |
| Usage Summary: | Immunohistochemistry: LS-B1590 was validated for use in immunohistochemistry on a panel of 21 formalin-fixed, paraffin-embedded (FFPE) human tissues and a panel of mouse tissues after heat induced antigen retrieval in pH 6.0 citrate buffer. After incubation with the primary antibody, slides were incubated with biotinylated secondary antibody, followed by alkaline phosphatase-streptavidin and chromogen. The stained slides were evaluated by a pathologist to confirm staining specificity. The optimal working concentration for LS-B1590 was determined to be 5 ug/ml. |
| Uses: | IHC - Paraffin (5 µg/ml), Western blot (Optimal dilution to be determined by the researcher) |
| Size: | 50 µg |
| Concentration: | 0.5 mg/ml |

Immunohistochemistry Image:



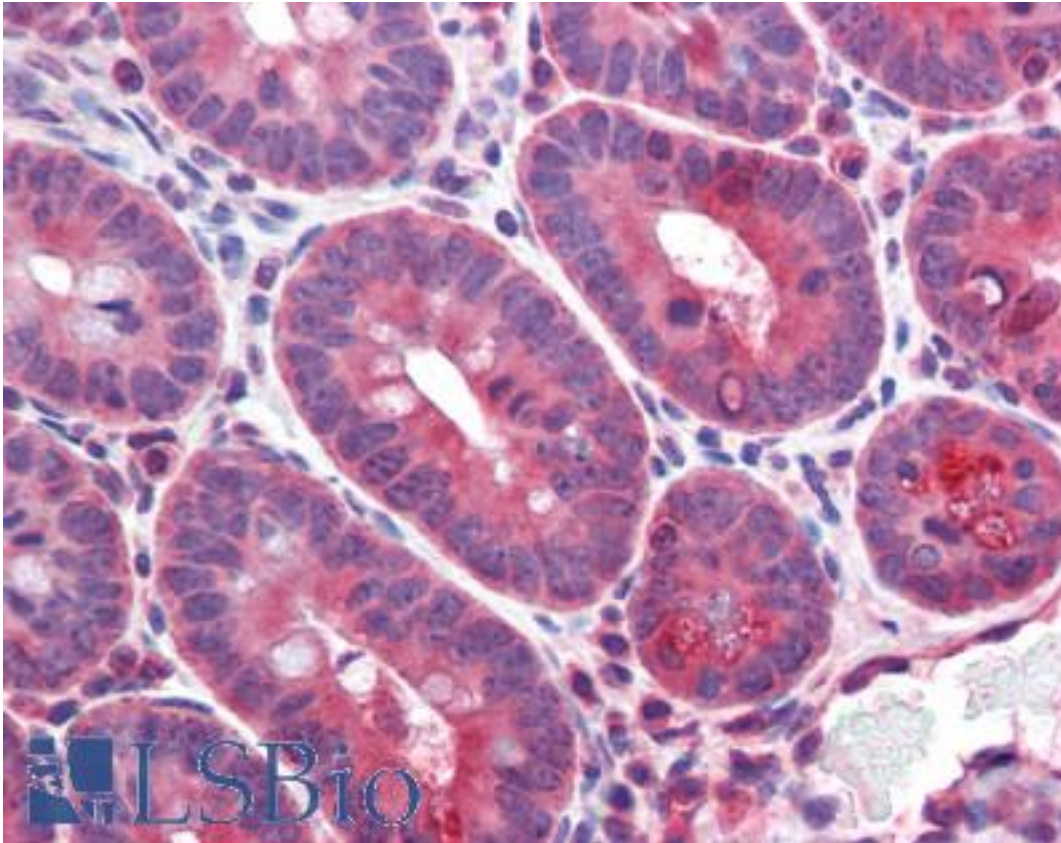
Anti-CD36 antibody IHC of human heart. Immunohistochemistry of formalin-fixed, paraffin-embedded tissue after heat-induced antigen retrieval. Antibody LS-B1590 concentration 5 ug/ml.

Immunohistochemistry Image:



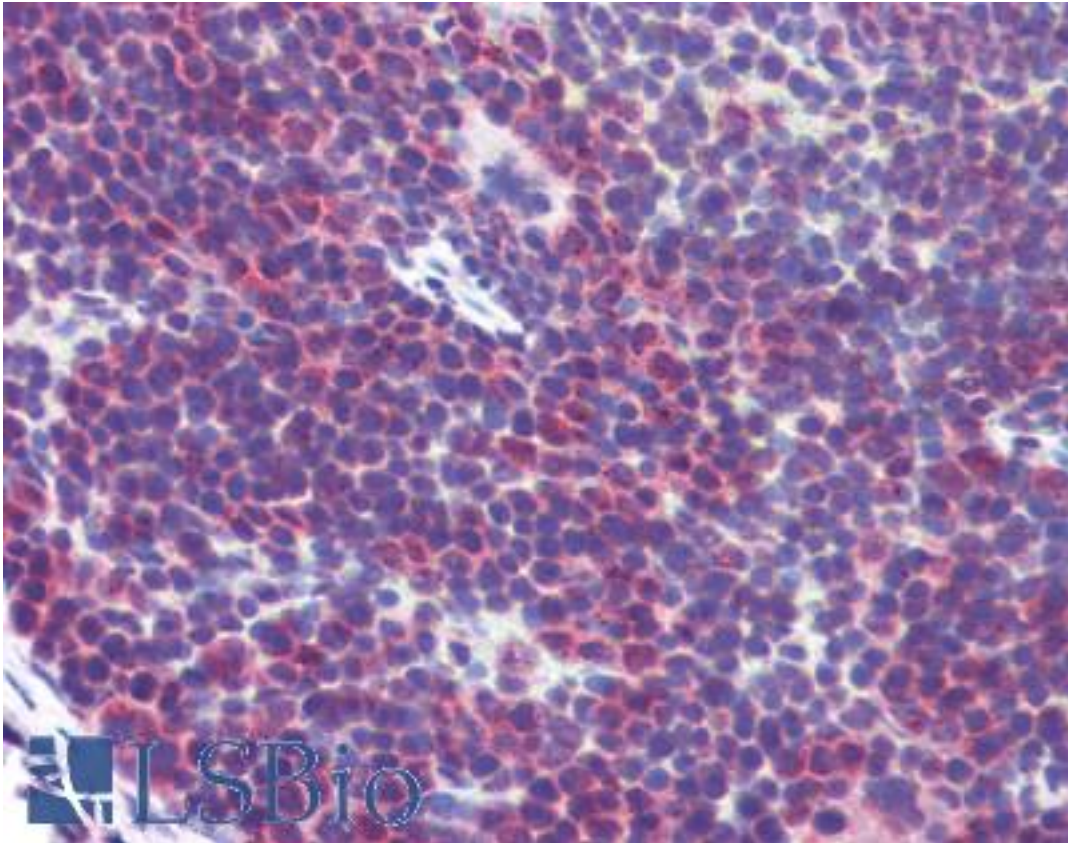
Anti-CD36 antibody IHC of mouse heart. Immunohistochemistry of formalin-fixed, paraffin-embedded tissue after heat-induced antigen retrieval. Antibody LS-B1590 concentration 5 ug/ml.

Immunohistochemistry Image:



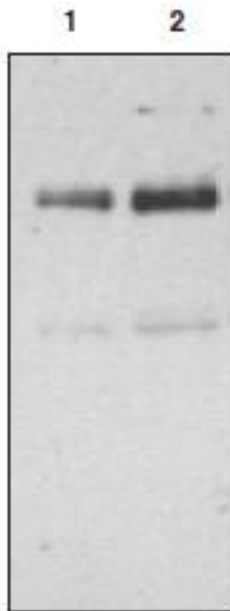
Anti-CD36 antibody IHC of mouse small intestine. Immunohistochemistry of formalin-fixed, paraffin-embedded tissue after heat-induced antigen retrieval. Antibody LS-B1590 concentration 5 ug/ml.

Immunohistochemistry Image:



Anti-CD36 antibody IHC of mouse spleen. Immunohistochemistry of formalin-fixed, paraffin-embedded tissue after heat-induced antigen retrieval. Antibody LS-B1590 concentration 5 ug/ml.

Western Blot Image:



Lane 1: Human platelet lysate (15 µg)

Lane 2: Human platelet lysate (30 µg)

Bands located at 88 kD (glycosylated) and 54kD (non-glycosylated).

Requested From:

Japan

Laboratory Reagent For In Vitro Research Use Only

Not for resale without prior written consent from LifeSpan BioSciences, Inc.

Created on 9/23/2014

© 2014 LifeSpan BioSciences