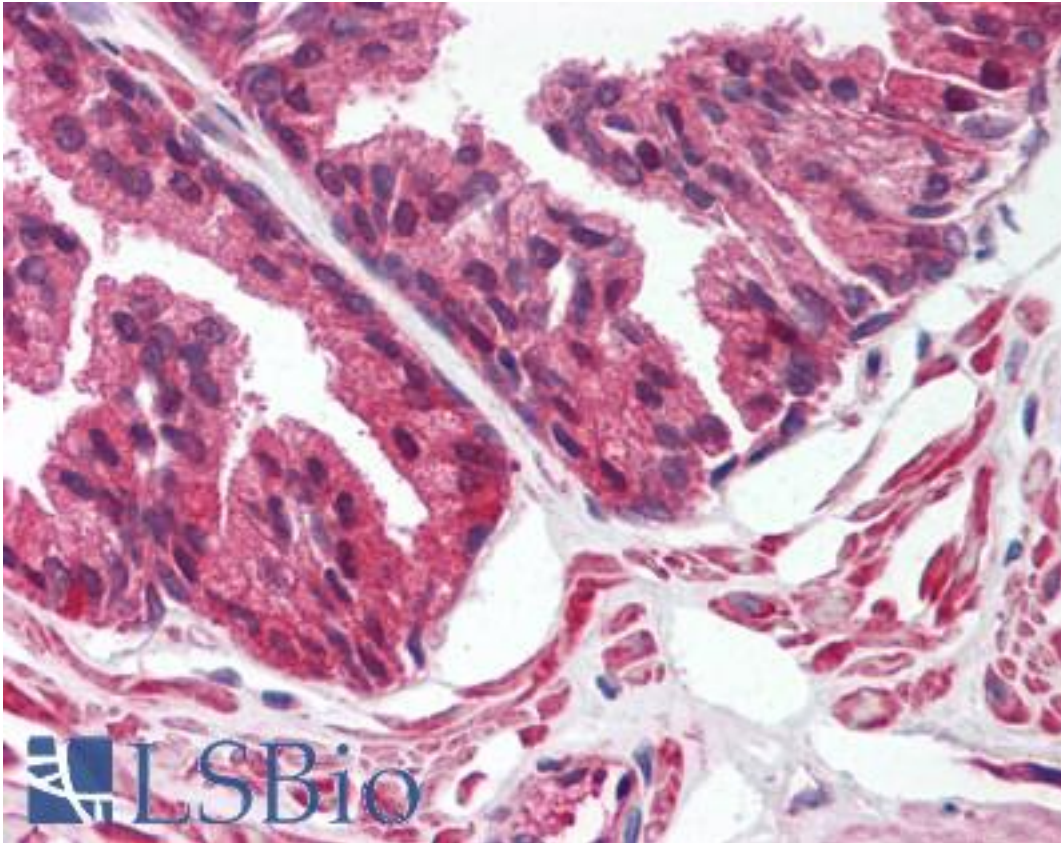


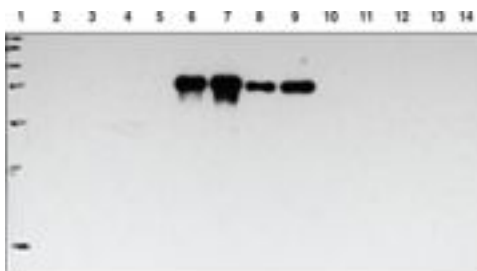
ALOX15B / 15 Lipoxygenase 2 Rabbit anti-Human Polyclonal (aa161-179) Antibody - LS-B1588 - LSBio	
<b>CatalogID:</b>	LS-B1588
<b>Validation:</b>	This antibody replaces catalog number LS-C11172. It has been validated for use in the following assays: IHC.
<b>Target:</b>	arachidonate 15-lipoxygenase, type B (ALOX15B)
<b>Synonyms:</b>	ALOX15B Antibody, 15S-lipoxygenase Antibody, 15-lipoxygenase 2 Antibody, 15-LOX-2 Antibody, 15-LOX-B Antibody, Arachidonate 15-lipoxygenase B Antibody, Arachidonate 15-lipoxygenase 2 Antibody
<b>Family / Subfamily:</b>	Lipoxygenase / Not assigned-Other
<b>Host</b>	ALOX15B antibody was produced in Rabbit
<b>Clonality:</b>	Polyclonal
<b>Isotype:</b>	IgG
<b>Immunogen Species:</b>	ALOX15B / 15 Lipoxygenase 2 antibody was raised against Human
<b>Immunogen:</b>	ALOX15B / 15 Lipoxygenase 2 antibody was raised against human 15-lipoxygenase-2 (15-LO-2) amino acids 161-179 (CLDEKTVEDLELNKYSTA). Percent identity by BLAST analysis: Human (100%); Gorilla (94%).
<b>Specificity:</b>	Human 15-lipoxygenase-2 (15-LO-2) amino acids 161-179 (CLDEKTVEDLELNKYSTA. Antibody did not cross-react with 15-LO-1 in Western testing using recombinant protein.
<b>Epitope:</b>	aa161-179
<b>Reactivity:</b>	Human
<b>Predicted Reactivity:</b>	Gorilla
<b>Purification:</b>	Immunoaffinity purified
<b>Presentation:</b>	TBS, pH 7.4, 50% glycerol, 0.1% BSA, 0.02 % sodium azide.
<b>Recommended Storage:</b>	Long term: -20°C; Short term: +4°C. Avoid repeat freeze-thaw cycles.
<b>Usage Summary:</b>	Immunohistochemistry: LS-B1588 was validated for use in immunohistochemistry on a panel of 21 formalin-fixed, paraffin-embedded (FFPE) human tissues after heat induced antigen retrieval in pH 6.0 citrate buffer. After incubation with the primary antibody, slides were incubated with biotinylated secondary antibody, followed by alkaline phosphatase-streptavidin and chromogen. The stained slides were evaluated by a pathologist to confirm staining specificity. The optimal working concentration for LS-B1588 was determined to be 5 µg/ml.
<b>Uses:</b>	IHC - Paraffin (5 µg/ml), Western blot (Optimal dilution to be determined by the researcher)
<b>Size:</b>	50 µg
<b>Concentration:</b>	0.4 mg/ml

### Immunohistochemistry Image:



Anti-ALOX15B / 15 Lipoxygenase 2 antibody IHC of human prostate. Immunohistochemistry of formalin-fixed, paraffin-embedded tissue after heat-induced antigen retrieval. Antibody LS-B1588 concentration 5 ug/ml.

### Western Blot Image:



Lane 1: Precision Plus Protein Standard  
Lane 2: 15-LO1 Western Ready Control (5 µl)  
Lane 3: 15-LO1 Western Ready Control (10 µl)  
Lane 4: 15-LO1 Recombinant (pure) (0.01 µg)  
Lane 5: 15-LO1 Recombinant (pure) (0.02 µg)  
Lane 6: 15-LO2 Western Ready Control (5 µl)  
Lane 7: 15-LO2 Western Ready Control (10 µl)  
Lane 8: 15-LO2 Recombinant (pure) (0.01 µg)  
Lane 9: 15-LO2 Recombinant (pure) (0.02 µg)  
Lane 10: 5-LO Western Ready Control (1 µl)  
Lane 11: 5-LO Western Ready Control (5 µl)  
Lane 12: 5-LO Western Ready Control (10 µl)  
Lane 13: Porcine Leukocyte lysate (10 µg)  
Lane 14: Porcine Leukocyte lysate (20 µg)

Figure 1: 15-Lipoxygenase 2 Polyclonal Antibody used at 1:200 dilution detected 15-LO2 but not 15-LO1, 5-LO or any lipoxygenases present in porcine leukocytes (i.e. 13-LO).

Western blot of ALOX15B antibody LS-B1588.

Requested From:

Japan

Laboratory Reagent For In Vitro Research Use Only

Not for resale without prior written consent from LifeSpan BioSciences, Inc.

Created on 9/23/2014

© 2014 LifeSpan BioSciences