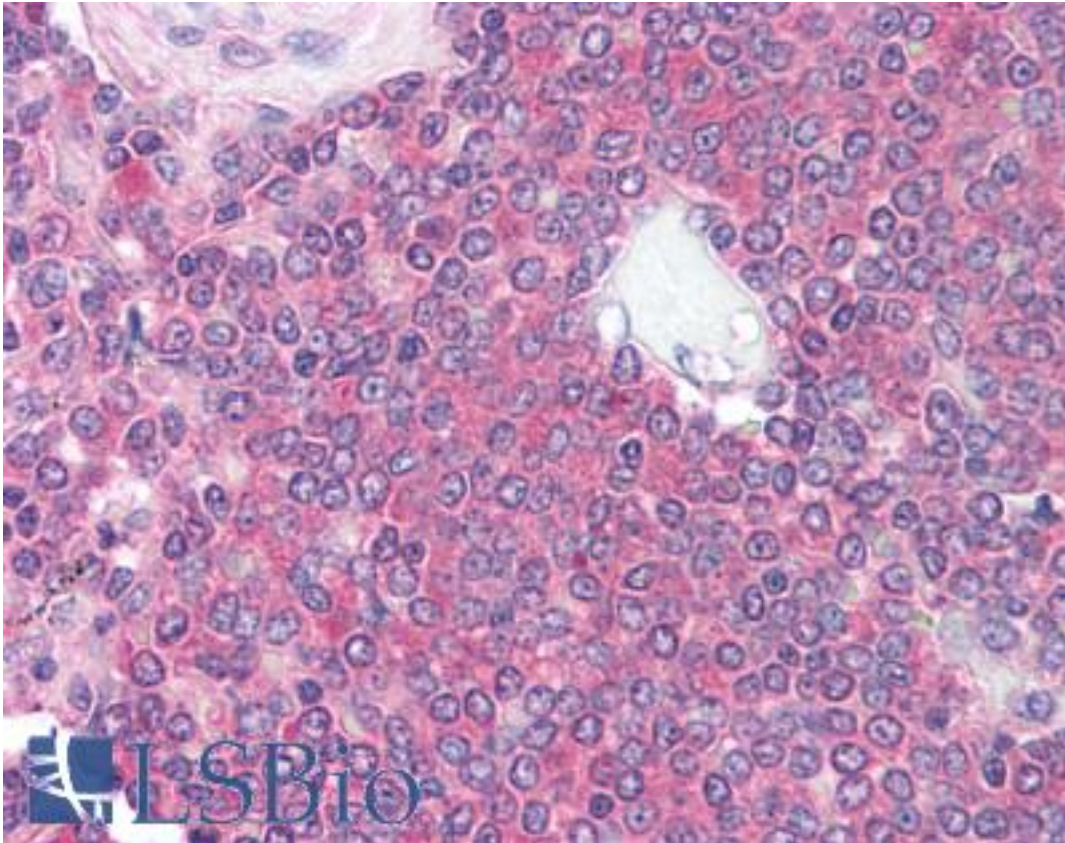


MME / CD10 Mouse anti-Human Monoclonal Antibody - LS-B1584 - LSBio	
<b>CatalogID:</b>	LS-B1584
<b>Validation:</b>	This antibody replaces catalog number LS-C41384. It has been validated for use in the following assays: IHC.
<b>Target:</b>	membrane metallo-endopeptidase (MME)
<b>Synonyms:</b>	MME Antibody, Atriopeptidase Antibody, CALLA Antibody, CD10 Antibody, EPN Antibody, Membrane metallo-endopeptidase Antibody, NEP Antibody, Nepriylsin Antibody, Neutral endopeptidase Antibody, Neutral endopeptidase 24.11 Antibody, CD10 antigen Antibody, Enkephalinase Antibody, Neprylisin Antibody, SFE Antibody, Skin fibroblast elastase Antibody
<b>Family / Subfamily:</b>	Protease / Metallopeptidase M13
<b>Host</b>	MME antibody was produced in Mouse
<b>Clonality:</b>	Monoclonal
<b>Isotype:</b>	IgG2b
<b>Immunogen Species:</b>	MME / CD10 antibody was raised against Human
<b>Immunogen:</b>	MME / CD10 antibody was raised against recombinant human MME / CD10.
<b>Specificity:</b>	Ni-NTA purified recombinant human CD-10 expressed in E. Coli strain BL21 (DE3)
<b>Reactivity:</b>	Human
<b>Purification:</b>	Protein G purified
<b>Presentation:</b>	PBS, pH 7.4, 0.03% sodium azide.
<b>Recommended Storage:</b>	Long term: -20°C; Short term: +4°C. Avoid repeat freeze-thaw cycles.
<b>Usage Summary:</b>	Immunohistochemistry: LS-B1584 was validated for use in immunohistochemistry on a panel of 21 formalin-fixed, paraffin-embedded (FFPE) human tissues after heat induced antigen retrieval in pH 6.0 citrate buffer. After incubation with the primary antibody, slides were incubated with biotinylated secondary antibody, followed by alkaline phosphatase-streptavidin and chromogen. The stained slides were evaluated by a pathologist to confirm staining specificity. The optimal working concentration for LS-B1584 was determined to be 1:100-1:200.
<b>Uses:</b>	IHC - Paraffin (1:100 - 1:200), IHC - Frozen (1:200 - 1:400), ELISA (1:10000) (Optimal dilution to be determined by the researcher)
<b>Size:</b>	50 µl
<b>Concentration:</b>	1 mg/ml

**Immunohistochemistry Image:**



Anti-CD10 antibody IHC of human spleen. Immunohistochemistry of formalin-fixed, paraffin-embedded tissue after heat-induced antigen retrieval. Antibody LS-B1584 dilution 1:100.

**Requested From:**

Japan

Laboratory Reagent For In Vitro Research Use Only

Not for resale without prior written consent from LifeSpan BioSciences, Inc.

Created on 9/23/2014

© 2014 LifeSpan BioSciences