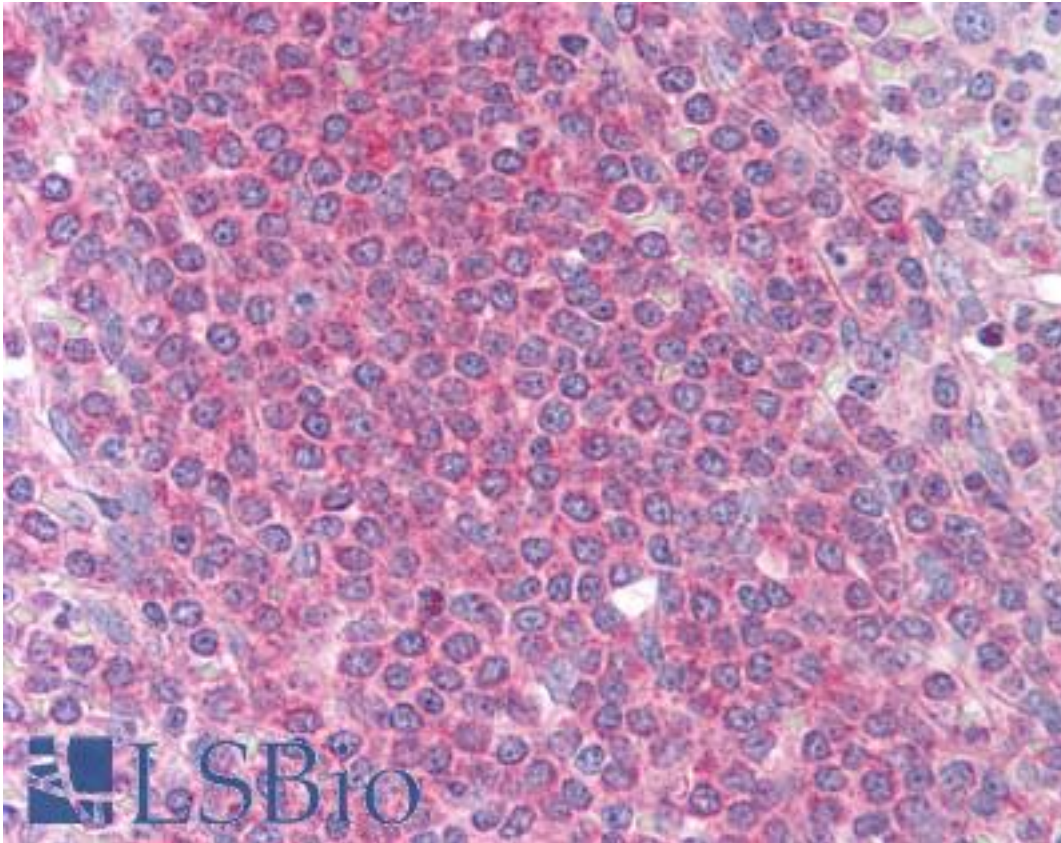


MCL1 / MCL 1 Mouse anti-Human Monoclonal (8C6, 8C6D4B1 ) Antibody - LS-B1583 - LSBio	
<b>CatalogID:</b>	LS-B1583
<b>Validation:</b>	This antibody replaces catalog number LS-C41385. It has been validated for use in the following assays: IHC.
<b>Target:</b>	myeloid cell leukemia sequence 1 (BCL2-related) (MCL1)
<b>Synonyms:</b>	MCL1 Antibody, BCL2L3 Antibody, Bcl-2-like protein 3 Antibody, Bcl-2-related protein EAT/mcl1 Antibody, Bcl2-L-3 Antibody, MCL1S Antibody, MCL1L Antibody, Myeloid cell leukemia ES Antibody, MCL 1 Antibody, MCL1-ES Antibody, TM Antibody, EAT Antibody, Mcl-1 Antibody
<b>Host</b>	MCL1 antibody was produced in Mouse
<b>Clonality:</b>	Monoclonal
<b>Isotype:</b>	IgG1
<b>Clone Name:</b>	8C6, 8C6D4B1
<b>Immunogen Species:</b>	MCL1 / MCL 1 antibody was raised against Human
<b>Immunogen:</b>	MCL1 / MCL 1 antibody was raised against recombinant human MCL1.
<b>Specificity:</b>	Ni-NTA purified recombinant protein MCL-1expressed in E. Coli strain M15
<b>Reactivity:</b>	Human
<b>Purification:</b>	Protein G purified
<b>Presentation:</b>	PBS, pH 7.4, 0.03% sodium azide.
<b>Recommended Storage:</b>	+4°C or -20°C, Avoid repeated freezing and thawing.
<b>Usage Summary:</b>	Immunohistochemistry: LS-B1583 was validated for use in immunohistochemistry on a panel of 21 formalin-fixed, paraffin-embedded (FFPE) human tissues after heat induced antigen retrieval in pH 6.0 citrate buffer. After incubation with the primary antibody, slides were incubated with biotinylated secondary antibody, followed by alkaline phosphatase-streptavidin and chromogen. The stained slides were evaluated by a pathologist to confirm staining specificity. The optimal working concentration for LS-B1583 was determined to be 1:200-1:1000.
<b>Uses:</b>	IHC - Paraffin (1:200 - 1:1000), IHC - Frozen (1:200 - 1:1000), Western blot (1:200 - 1:1000), ELISA (1:10000) (Optimal dilution to be determined by the researcher)
<b>Size:</b>	50 µl
<b>Concentration:</b>	1 mg/ml

**Immunohistochemistry Image:**



Anti-MCL1 antibody IHC of human spleen. Immunohistochemistry of formalin-fixed, paraffin-embedded tissue after heat-induced antigen retrieval. Antibody LS-B1583 dilution 1:200.

**Requested From:**

Japan

Laboratory Reagent For In Vitro Research Use Only

Not for resale without prior written consent from LifeSpan BioSciences, Inc.

Created on 9/23/2014

© 2014 LifeSpan BioSciences