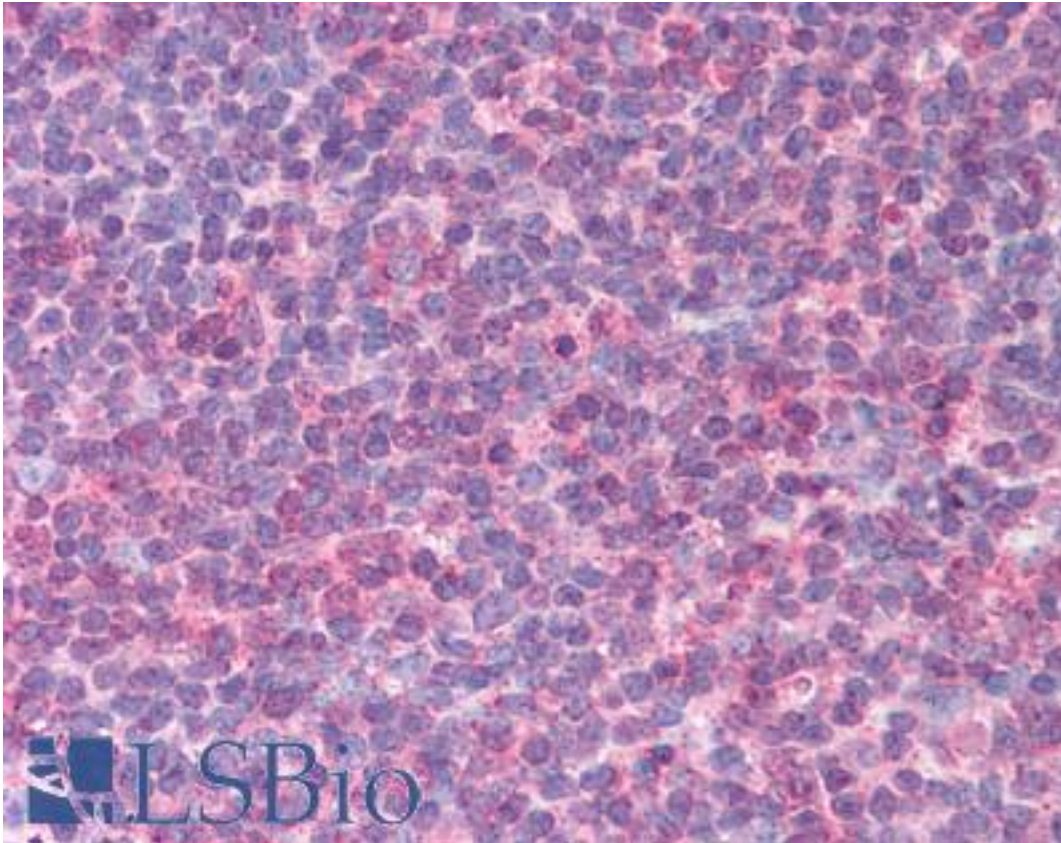


**IL6 Mouse anti-Human Monoclonal (6D9A1,6C12B1 ) Antibody - LS-B1582 - LSBio**

<b>CatalogID:</b>	LS-B1582
<b>Validation:</b>	This antibody replaces catalog number LS-C41383. It has been validated for use in the following assays: IHC.
<b>Target:</b>	interleukin 6 (interferon, beta 2) (IL6)
<b>Synonyms:</b>	IL6 Antibody, B-cell stimulatory factor 2 Antibody, BSF-2 Antibody, BSF2 Antibody, CTL differentiation factor Antibody, Hybridoma growth factor Antibody, IFN-beta-2 Antibody, Interleukin-6 Antibody, Interferon beta-2 Antibody, Interleukin BSF-2 Antibody, IFNB2 Antibody, B-cell differentiation factor Antibody, CDF Antibody, HSF Antibody, IL-6 Antibody
<b>Family / Subfamily:</b>	Hormone / not assigned-Hormone
<b>Host</b>	IL6 antibody was produced in Mouse
<b>Clonality:</b>	Monoclonal
<b>Isotype:</b>	IgG1
<b>Clone Name:</b>	6D9A1,6C12B1
<b>Immunogen Species:</b>	IL6 antibody was raised against Human
<b>Immunogen:</b>	IL6 antibody was raised against recombinant human IL6 / IL-6.
<b>Specificity:</b>	Ni-NTA purified recombinant human IL-6 expressed in E. Coli strain BL21 (DE3)
<b>Reactivity:</b>	Human
<b>Purification:</b>	Ascites
<b>Presentation:</b>	Ascitic fluid, 0.03% sodium azide.
<b>Recommended Storage:</b>	+4°C or -20°C, Avoid repeated freezing and thawing.
<b>Usage Summary:</b>	Immunohistochemistry: LS-B1582 was validated for use in immunohistochemistry on a panel of 21 formalin-fixed, paraffin-embedded (FFPE) human tissues after heat induced antigen retrieval in pH 6.0 citrate buffer. After incubation with the primary antibody, slides were incubated with biotinylated secondary antibody, followed by alkaline phosphatase-streptavidin and chromogen. The stained slides were evaluated by a pathologist to confirm staining specificity. The optimal working concentration for LS-B1582 was determined to be 1:200.
<b>Uses:</b>	IHC - Paraffin (1:200), Western blot (1:200 - 1:1000), ELISA (1:10000) (Optimal dilution to be determined by the researcher)
<b>Size:</b>	50 µl

**Immunohistochemistry Image:**



Anti-IL-6 antibody IHC of human tonsil. Immunohistochemistry of formalin-fixed, paraffin-embedded tissue after heat-induced antigen retrieval. Antibody LS-B1582 dilution 1:200.

**Requested From:**

Japan

Laboratory Reagent For In Vitro Research Use Only

Not for resale without prior written consent from LifeSpan BioSciences, Inc.

Created on 9/23/2014

© 2014 LifeSpan BioSciences