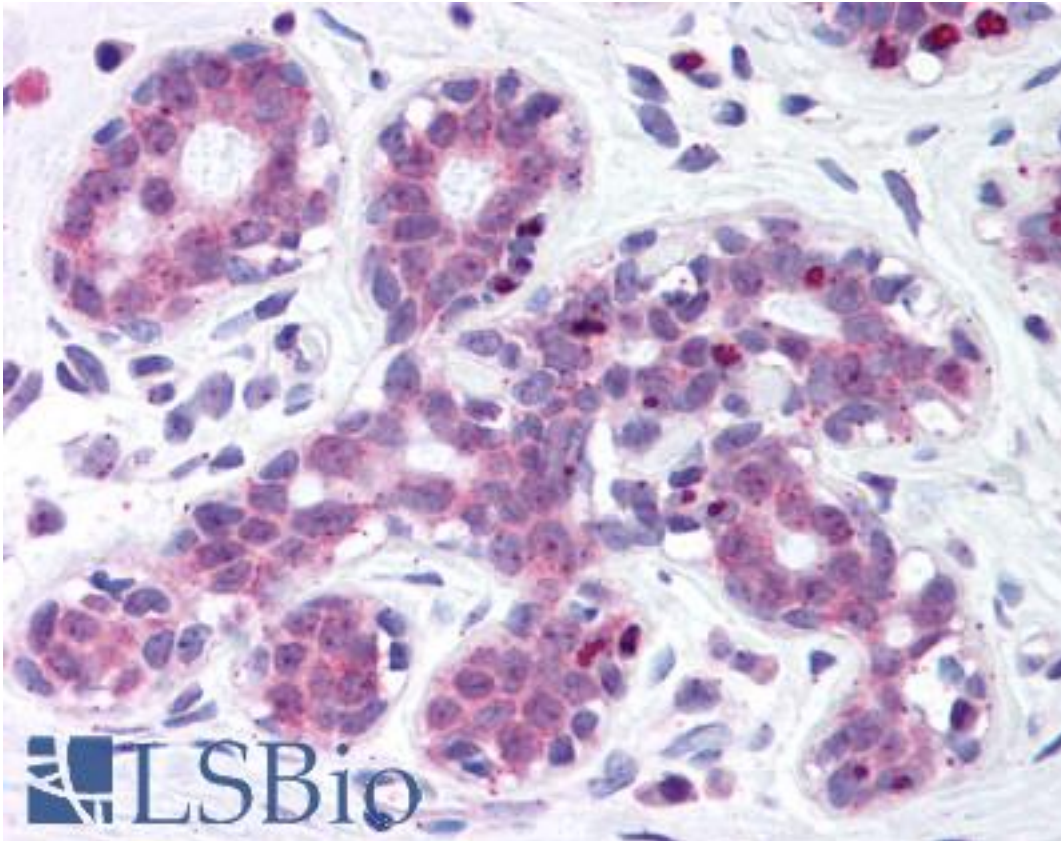


ER Alpha / Estrogen Receptor Mouse anti-Human Monoclonal (aa410-592) Antibody - LS-B1578 - LSBio	
CatalogID:	LS-B1578
Validation:	This antibody replaces catalog number LS-C41415. It has been validated for use in the following assays: IHC.
Target:	estrogen receptor 1 (ESR1)
Synonyms:	ESR1 Antibody, Era Antibody, ERalpha Antibody, Estrogen receptor Antibody, Estradiol receptor Antibody, ER-alpha Antibody, Estrogen receptor 1 Antibody, NR3A1 Antibody, ER Antibody, ESR Antibody, ESRA Antibody, Estrogen receptor alpha Antibody
Family / Subfamily:	NHR / NR3 Steroid receptor
Host	ESR1 antibody was produced in Mouse
Clonality:	Monoclonal
Isotype:	IgG1
Immunogen Species:	ER Alpha / Estrogen Receptor antibody was raised against Human
Immunogen:	ER Alpha / Estrogen Receptor antibody was raised against recombinant human ESR1 / Estrogen receptor.
Specificity:	Ni-NTA purified recombinant human ER-alpha (410-592aa) expressed in E. Coli strain BL21 (DE3)
Epitope:	aa410-592
Reactivity:	Human
Purification:	Protein A purified
Presentation:	PBS, pH 7.4, 0.03% sodium azide.
Recommended Storage:	+4°C or -20°C, Avoid repeated freezing and thawing.
Usage Summary:	Immunohistochemistry: LS-B1578 was validated for use in immunohistochemistry on a panel of 21 formalin-fixed, paraffin-embedded (FFPE) human tissues after heat induced antigen retrieval in pH 6.0 citrate buffer. After incubation with the primary antibody, slides were incubated with biotinylated secondary antibody, followed by alkaline phosphatase-streptavidin and chromogen. The stained slides were evaluated by a pathologist to confirm staining specificity. The optimal working concentration for LS-B1578 was determined to be 1:800.
Uses:	IHC - Paraffin (1:800), Western blot (1:500 - 1:2000) (Optimal dilution to be determined by the researcher)
Size:	50 µl
Concentration:	1 mg/ml

Immunohistochemistry Image:



Anti-Estrogen Receptor antibody IHC of human breast. Immunohistochemistry of formalin-fixed, paraffin-embedded tissue after heat-induced antigen retrieval. Antibody LS-B1578 dilution 1:800.

Requested From:

Japan

Laboratory Reagent For In Vitro Research Use Only

Not for resale without prior written consent from LifeSpan BioSciences, Inc.

Created on 9/23/2014

© 2014 LifeSpan BioSciences