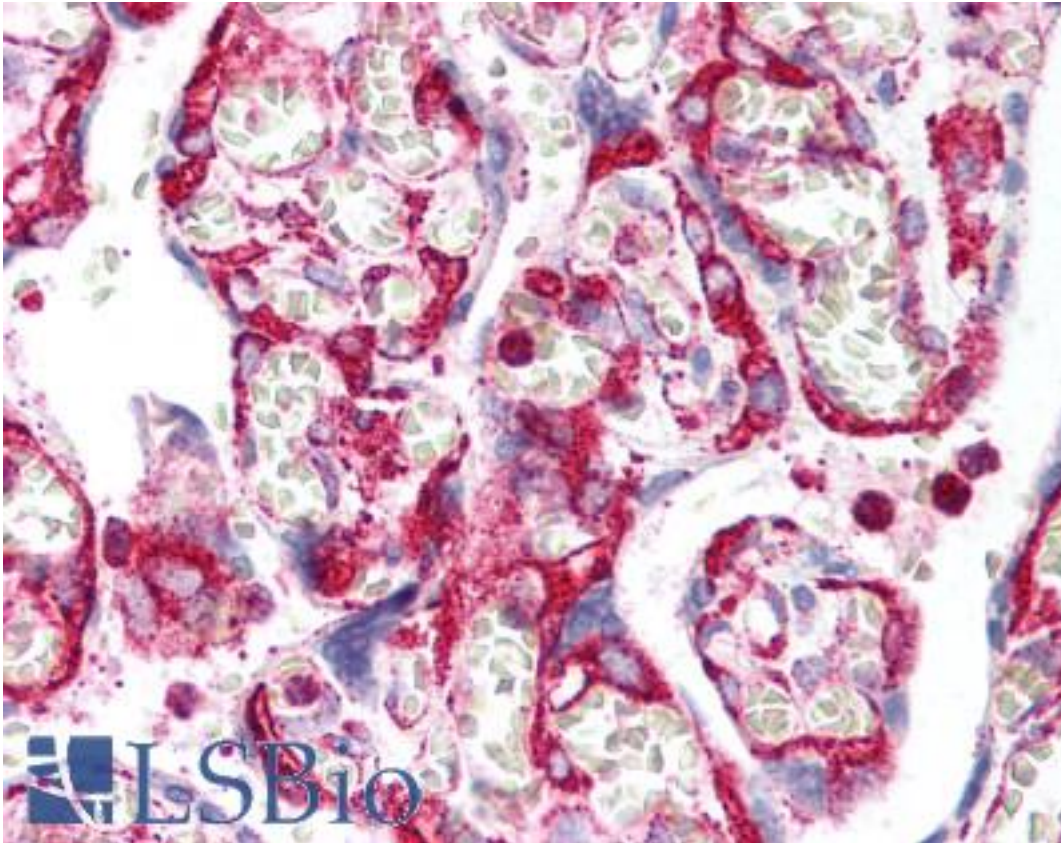


INHA / Inhibin Alpha Mouse anti-Human Monoclonal Antibody - LS-B1577 - LSBio	
CatalogID:	LS-B1577
Validation:	This antibody replaces catalog number LS-C41458. It has been validated for use in the following assays: IHC.
Target:	inhibin, alpha (INHA)
Synonyms:	INHA Antibody, A-inhibin subunit Antibody, Inhibin alpha Antibody, Inhibin, alpha Antibody, Inhibin alpha chain Antibody
Family / Subfamily:	TGF beta / not assigned-TGF beta
Host	INHA antibody was produced in Mouse
Clonality:	Monoclonal
Isotype:	IgG1
Immunogen Species:	INHA / Inhibin Alpha antibody was raised against Human
Immunogen:	INHA / Inhibin Alpha antibody was raised against recombinant human INHA / Inhibin Alpha.
Specificity:	Ni-NTA purified truncated recombinant INHA expressed in E. coli strain BL21 (DE3).
Reactivity:	Human
Purification:	Protein A purified
Presentation:	PBS, pH 7.4, 0.03% sodium azide.
Recommended Storage:	+4°C or -20°C, Avoid repeated freezing and thawing.
Usage Summary:	Immunohistochemistry: LS-B1577 was validated for use in immunohistochemistry on a panel of 21 formalin-fixed, paraffin-embedded (FFPE) human tissues after heat induced antigen retrieval in pH 6.0 citrate buffer. After incubation with the primary antibody, slides were incubated with biotinylated secondary antibody, followed by alkaline phosphatase-streptavidin and chromogen. The stained slides were evaluated by a pathologist to confirm staining specificity. The optimal working concentration for LS-B1577 was determined to be 1:1000-1:2000.
Uses:	IHC - Paraffin (1:1000 - 1:2000), Western blot (1:500 - 1:1000), ELISA (1:10000) (Optimal dilution to be determined by the researcher)
Size:	50 µl
Concentration:	1 mg/ml

Immunohistochemistry Image:



Anti-INHA / Inhibin Alpha antibody IHC of human placenta. Immunohistochemistry of formalin-fixed, paraffin-embedded tissue after heat-induced antigen retrieval. Antibody LS-B1577 dilution 1:1000.

Requested From:

Japan

Laboratory Reagent For In Vitro Research Use Only

Not for resale without prior written consent from LifeSpan BioSciences, Inc.

Created on 9/23/2014

© 2014 LifeSpan BioSciences