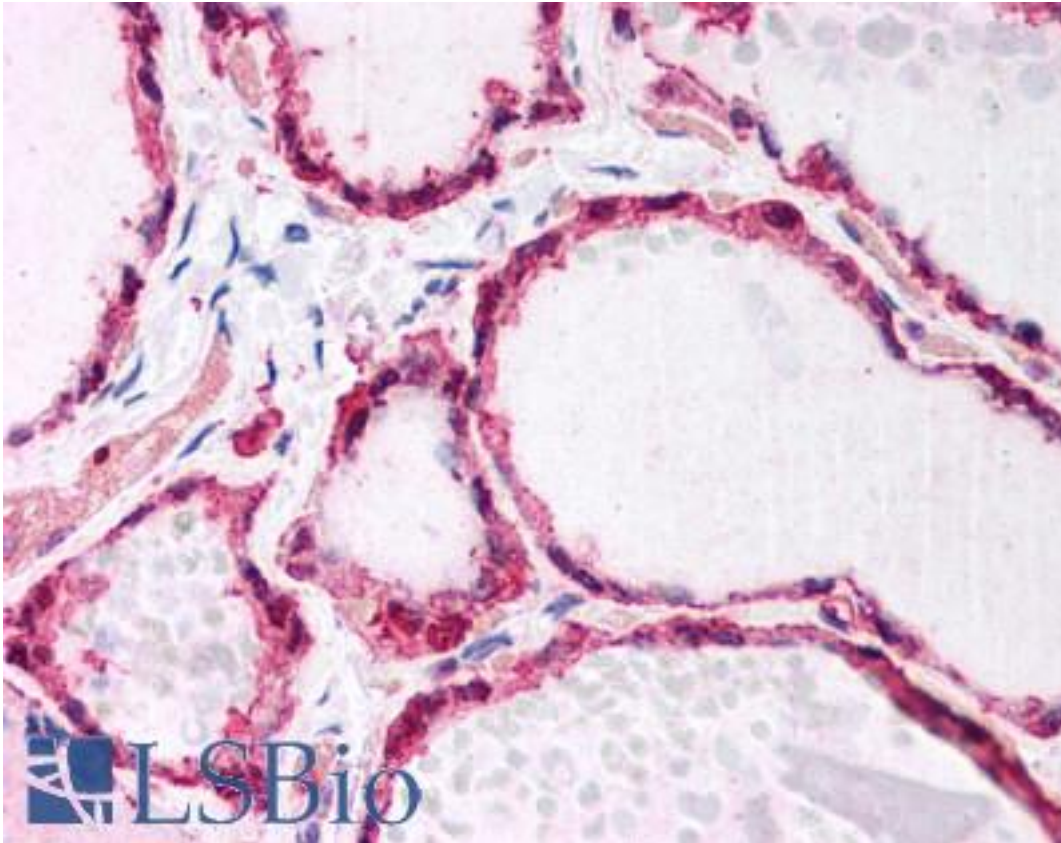


GSTP1 / GST Pi Mouse anti-Human Monoclonal (3F2C2) Antibody - LS-B1576 - LSBio	
CatalogID:	LS-B1576
Validation:	This antibody replaces catalog number LS-C41450. It has been validated for use in the following assays: IHC.
Target:	glutathione S-transferase pi 1 (GSTP1)
Synonyms:	GSTP1 Antibody, Deafness, X-linked 7 Antibody, DFN7 Antibody, GSTP1-1 Antibody, Glutathione S-transferase P Antibody, GST Pi Antibody, GSTP Antibody, FAEES3 Antibody, Glutathione S-transferase pi 1 Antibody, GST class-pi Antibody, GST3 Antibody, PI Antibody
Host	GSTP1 antibody was produced in Mouse
Clonality:	Monoclonal
Isotype:	IgG1
Clone Name:	3F2C2
Immunogen Species:	GSTP1 / GST Pi antibody was raised against Human
Immunogen:	GSTP1 / GST Pi antibody was raised against recombinant human GSTP1.
Specificity:	Ni-NTA purified truncated recombinant GSTP1 expressed in E. Coli strain BL21 (DE3)
Reactivity:	Human
Purification:	Protein A purified
Presentation:	PBS, pH 7.4, 0.03% sodium azide. Sourced in Ascites.
Recommended Storage:	Long term: -20°C; Short term: +4°C. Avoid repeat freeze-thaw cycles.
Usage Summary:	Immunohistochemistry: LS-B1576 was validated for use in immunohistochemistry on a panel of 21 formalin-fixed, paraffin-embedded (FFPE) human tissues after heat induced antigen retrieval in pH 6.0 citrate buffer. After incubation with the primary antibody, slides were incubated with biotinylated secondary antibody, followed by alkaline phosphatase-streptavidin and chromogen. The stained slides were evaluated by a pathologist to confirm staining specificity. The optimal working concentration for LS-B1576 was determined to be 1:500-1:2000.
Uses:	IHC - Paraffin (1:500 - 1:2000), IHC - Frozen (1:500 - 1:2000), Western blot (1:500 - 1:2000), ELISA (1:10000) (Optimal dilution to be determined by the researcher)
Size:	50 µg
Concentration:	1 mg/ml

Immunohistochemistry Image:



Anti-GSTP1 antibody IHC of human thyroid. Immunohistochemistry of formalin-fixed, paraffin-embedded tissue after heat-induced antigen retrieval. Antibody LS-B1576 dilution 1:500.

Requested From:

Japan

Laboratory Reagent For In Vitro Research Use Only

Not for resale without prior written consent from LifeSpan BioSciences, Inc.

Created on 9/23/2014

© 2014 LifeSpan BioSciences