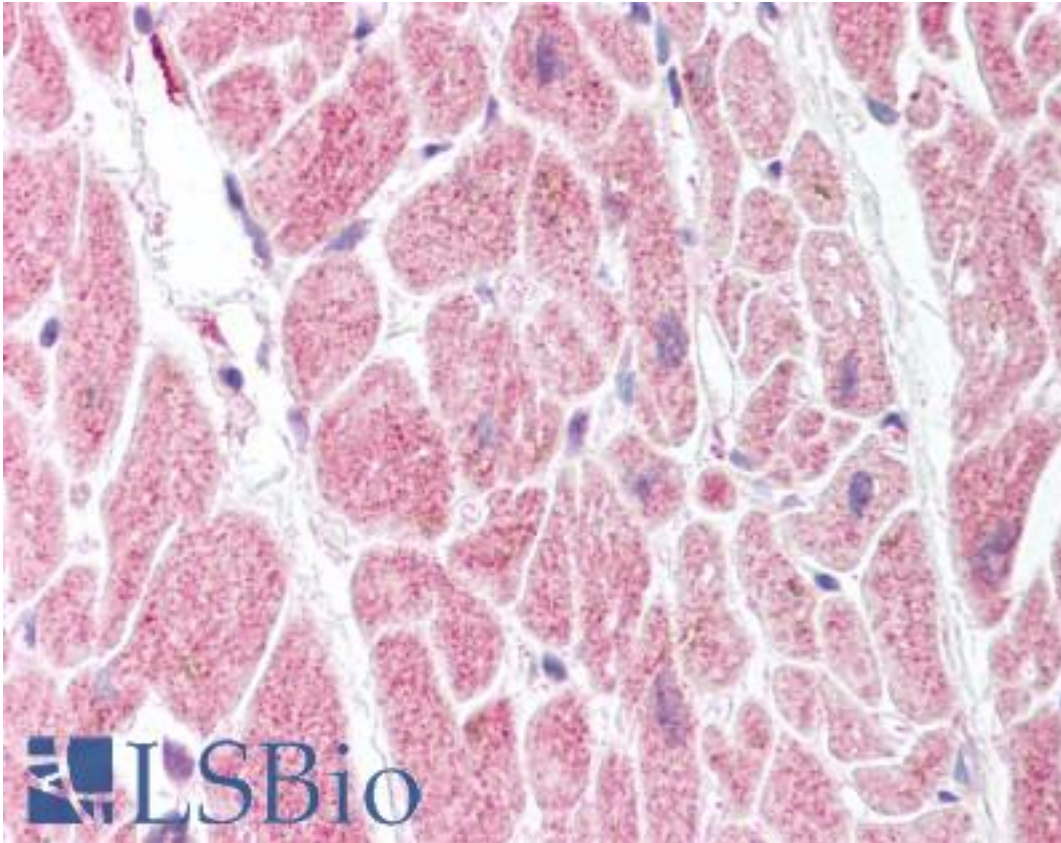


**PGIS / PTGIS Rabbit anti-Mouse Polyclonal (aa475-490) Antibody - LS-B1505 - LSBio**

<b>CatalogID:</b>	LS-B1505
<b>Validation:</b>	This antibody replaces catalog number LS-C11185. It has been validated for use in the following assays: IHC.
<b>Target:</b>	prostaglandin I2 (prostacyclin) synthase (PTGIS)
<b>Synonyms:</b>	PTGIS Antibody, CYP8A1 Antibody, Prostaglandin I2 synthase Antibody, Prostacyclin synthase Antibody, PTGI Antibody, CYP8 Antibody, PGIS Antibody
<b>Host</b>	PTGIS antibody was produced in Rabbit
<b>Clonality:</b>	Polyclonal
<b>Isotype:</b>	IgG
<b>Immunogen Species:</b>	PGIS / PTGIS antibody was raised against Mouse
<b>Immunogen:</b>	PGIS / PTGIS antibody was raised against mouse prostaglandin I synthase (PGIS) amino acids 475-490 conjugated to KLH (PEFDLSRYGFGLMQPE). Percent identity by BLAST analysis: Human, Gibbon, Monkey, Mouse, Rat, Dog, Bat, Bovine, Hamster, Elephant, Panda, Horse, Pig (100%); Opossum (88%); Platypus (81%).
<b>Specificity:</b>	Murine prostaglandin I synthase (PGIS) amino acids 475-490 conjugated to KLH (PEFDLSRYGFGLMQPE)
<b>Epitope:</b>	aa475-490
<b>Reactivity:</b>	Mouse, Human, Gibbon, Monkey, Rat, Bat, Bovine, Dog, Hamster, Horse, Pig
<b>Purification:</b>	Immunoaffinity purified
<b>Presentation:</b>	TBS, pH 7.4, 50% glycerol, 0.1% BSA, 0.02% sodium azide.
<b>Recommended Storage:</b>	Long term: -20°C; Short term: +4°C. Avoid repeat freeze-thaw cycles.
<b>Usage Summary:</b>	Immunohistochemistry: LS-B1505 was validated for use in immunohistochemistry on a panel of 21 formalin-fixed, paraffin-embedded (FFPE) human tissues after heat induced antigen retrieval in pH 6.0 citrate buffer. After incubation with the primary antibody, slides were incubated with biotinylated secondary antibody, followed by alkaline phosphatase-streptavidin and chromogen. The stained slides were evaluated by a pathologist to confirm staining specificity. The optimal working concentration for LS-B1505 was determined to be 20 ug/ml.
<b>Uses:</b>	IHC - Paraffin (20 µg/ml), Western blot (Optimal dilution to be determined by the researcher)
<b>Size:</b>	50 µg
<b>Concentration:</b>	0.5 mg/ml

**Immunohistochemistry Image:**



Anti-PTGIS antibody IHC of human heart. Immunohistochemistry of formalin-fixed, paraffin-embedded tissue after heat-induced antigen retrieval. Antibody LS-B1505 concentration 20 ug/ml.

**Requested From:**

Japan

Laboratory Reagent For In Vitro Research Use Only

Not for resale without prior written consent from LifeSpan BioSciences, Inc.

Created on 9/23/2014

© 2014 LifeSpan BioSciences