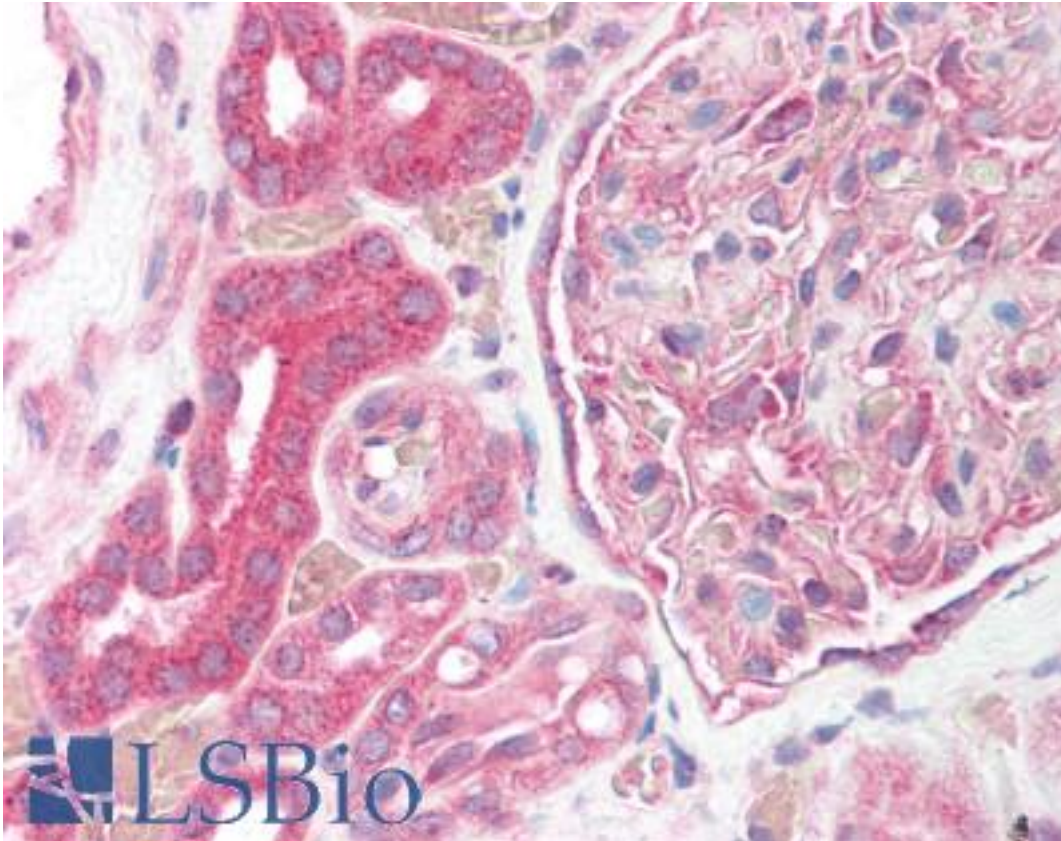


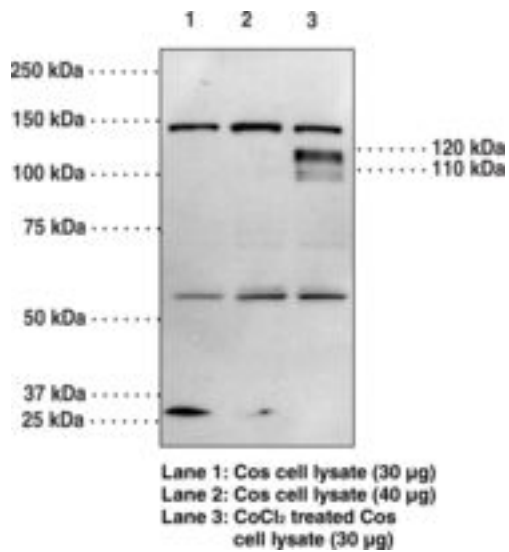
HIF1A / HIF1 Alpha Rabbit anti-Human Polyclonal (C-Terminus) Antibody - LS-B1503 - LSBio	
<b>CatalogID:</b>	LS-B1503
<b>Validation:</b>	This antibody replaces catalog number LS-C11695. It has been validated for use in the following assays: IHC.
<b>Target:</b>	hypoxia inducible factor 1, alpha subunit (basic helix-loop-helix transcription factor) (HIF1A)
<b>Synonyms:</b>	HIF1A Antibody, ARNT-interacting protein Antibody, ARNT interacting protein Antibody, BHLHe78 Antibody, HIF1 Alpha Antibody, Hypoxia-inducible factor1alpha Antibody, HIF-1A Antibody, HIF1 Antibody, MOP1 Antibody, Member of PAS superfamily 1 Antibody, PASD8 Antibody, HIF-1-alpha Antibody, HIF-1alpha Antibody, HIF1-ALPHA Antibody, Member of PAS protein 1 Antibody
<b>Host</b>	HIF1A antibody was produced in Rabbit
<b>Clonality:</b>	Polyclonal
<b>Isotype:</b>	IgG
<b>Immunogen Species:</b>	HIF1A / HIF1 Alpha antibody was raised against Human
<b>Immunogen:</b>	HIF1A / HIF1 Alpha antibody was raised against hIF-1 amino acids 809-826. Percent identity by BLAST analysis: Human, Chimpanzee, Gorilla, Orangutan, Gibbon, Monkey, Marmoset, Mouse, Rat, Dog, Bat, Bovine, Hamster, Elephant, Panda, Horse, Pig (100%); Turkey, Chicken, Platypus (94%); Opossum, Lizard, Xenopus (89%); Pike, Zebrafish (83%).
<b>Specificity:</b>	HIF-1 alpha amino acids (SRNLLQGEELLRALDQVN)
<b>Epitope:</b>	C-Terminus
<b>Reactivity:</b>	Human, Chimpanzee, Gorilla, Orangutan, Gibbon, Monkey, Mouse, Rat, Bat, Bovine, Dog, Hamster, Horse, Pig
<b>Predicted Reactivity:</b>	Chicken
<b>Purification:</b>	Immunoaffinity purified
<b>Presentation:</b>	TBS
<b>Recommended Storage:</b>	Long term: -20°C; Short term: +4°C. Avoid repeat freeze-thaw cycles.
<b>Usage Summary:</b>	Immunohistochemistry: LS-B1503 was validated for use in immunohistochemistry on a panel of 21 formalin-fixed, paraffin-embedded (FFPE) human tissues after heat induced antigen retrieval in pH 6.0 citrate buffer. After incubation with the primary antibody, slides were incubated with biotinylated secondary antibody, followed by alkaline phosphatase-streptavidin and chromogen. The stained slides were evaluated by a pathologist to confirm staining specificity. The optimal working concentration for LS-B1503 was determined to be 10 ug/ml.
<b>Uses:</b>	IHC - Paraffin (10 µg/ml), Western blot (Optimal dilution to be determined by the researcher)
<b>Size:</b>	1 ea

**Immunohistochemistry Image:**



Anti-HIF1A antibody IHC of human kidney. Immunohistochemistry of formalin-fixed, paraffin-embedded tissue after heat-induced antigen retrieval. Antibody LS-B1503 concentration 10 ug/ml.

**Western Blot Image:**



Western blot of HIF1A / HIF1 Alpha antibody LS-B1503.

Requested From:

Japan

Laboratory Reagent For In Vitro Research Use Only

Not for resale without prior written consent from LifeSpan BioSciences, Inc.

Created on 9/23/2014

© 2014 LifeSpan BioSciences