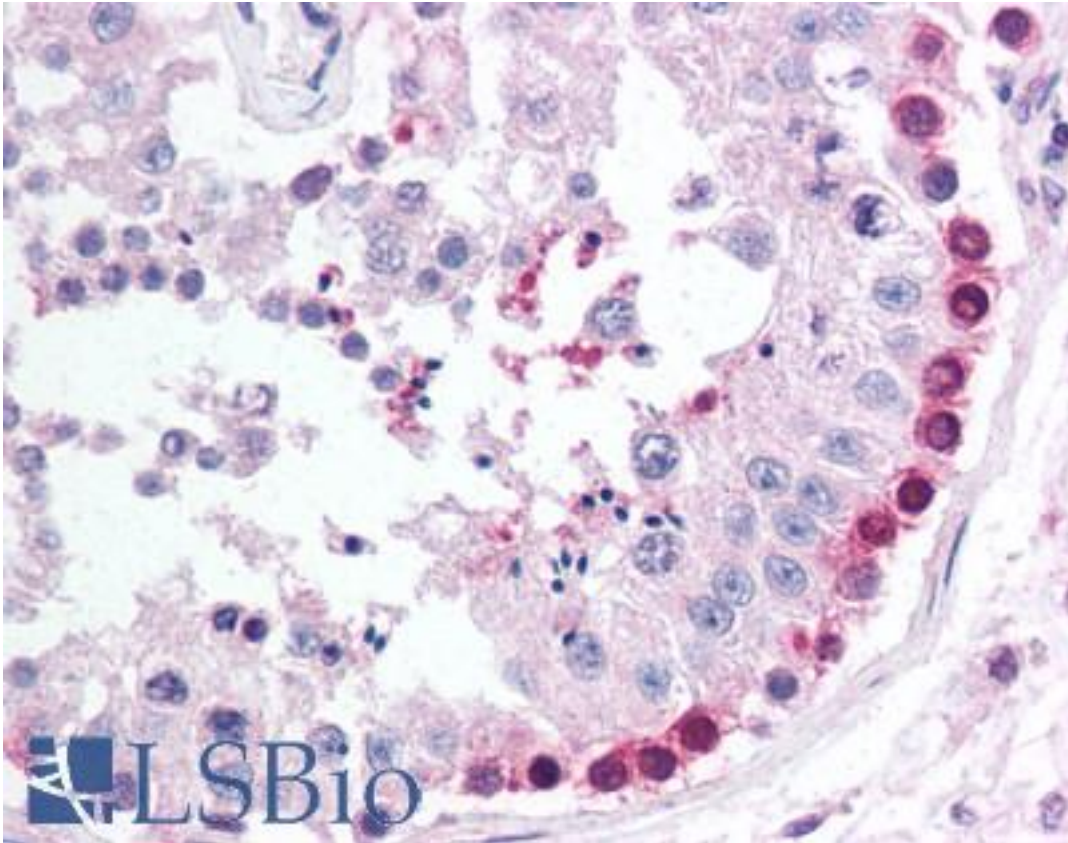


PINK1 Rabbit anti-Human Polyclonal (aa484-504) Antibody - LS-B1502 - LSBio

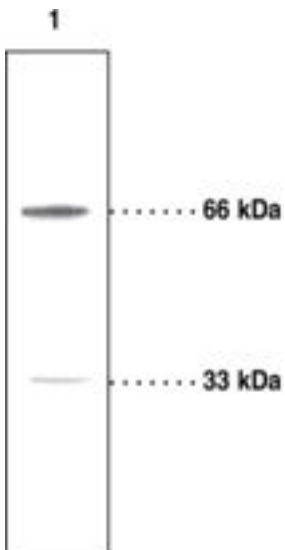
CatalogID:	LS-B1502
Validation:	This antibody replaces catalog number LS-C11705. It has been validated for use in the following assays: IHC.
Target:	PTEN induced putative kinase 1 (PINK1)
Synonyms:	PINK1 Antibody, BRPK Antibody, PTEN induced putative kinase 1 Antibody, PARK6 Antibody, PTEN-induced putative kinase Antibody, Protein kinase BRPK Antibody
Family / Subfamily:	Protein Kinase / NFK
Host	PINK1 antibody was produced in Rabbit
Clonality:	Polyclonal
Isotype:	IgG
Immunogen Species:	PINK1 antibody was raised against Human
Immunogen:	PINK1 antibody was raised against human PINK1 amino acids 484-504 (LVRALLQREASKRPSARVAAN). Percent identity by BLAST analysis: Human, Gorilla, Gibbon, Monkey, Marmoset (100%); Dog, Hamster, Elephant, Panda, Horse (95%); Mouse, Bat, Pig, Opossum (90%); Rat, Bovine, Platypus (86%); Rabbit (81%).
Specificity:	human PINK1 amino acids 484-504 (LVRALLQREASKRPSARVAAN)
Epitope:	aa484-504
Reactivity:	Human, Gorilla, Gibbon, Monkey
Predicted Reactivity:	Mouse, Bat, Dog, Hamster, Horse, Pig
Purification:	Immunoaffinity purified
Presentation:	TBS, pH 7.4, 0.5 mg/ml BSA, 0.02% sodium azide, 50% glycerol.
Recommended Storage:	Long term: -20°C; Short term: +4°C. Avoid repeat freeze-thaw cycles.
Usage Summary:	Immunohistochemistry: LS-B1502 was validated for use in immunohistochemistry on a panel of 21 formalin-fixed, paraffin-embedded (FFPE) human tissues after heat induced antigen retrieval in pH 6.0 citrate buffer. After incubation with the primary antibody, slides were incubated with biotinylated secondary antibody, followed by alkaline phosphatase-streptavidin and chromogen. The stained slides were evaluated by a pathologist to confirm staining specificity. The optimal working concentration for LS-B1502 was determined to be 20 ug/ml.
Uses:	IHC - Paraffin (20 µg/ml), Western blot (Optimal dilution to be determined by the researcher)
Size:	250 µl
Concentration:	0.6 mg/ml

Immunohistochemistry Image:



Anti-PINK1 antibody IHC of human testis. Immunohistochemistry of formalin-fixed, paraffin-embedded tissue after heat-induced antigen retrieval. Antibody LS-B1502 concentration 20 ug/ml.

Western Blot Image:



Lane 1: Mouse liver 100,000 x g pellet
(30 µg)

Western blot of PINK1 antibody LS-B1502.

Requested From:	Japan
Laboratory Reagent For In Vitro Research Use Only	
Not for resale without prior written consent from LifeSpan BioSciences, Inc.	
Created on 9/23/2014	
© 2014 LifeSpan BioSciences	