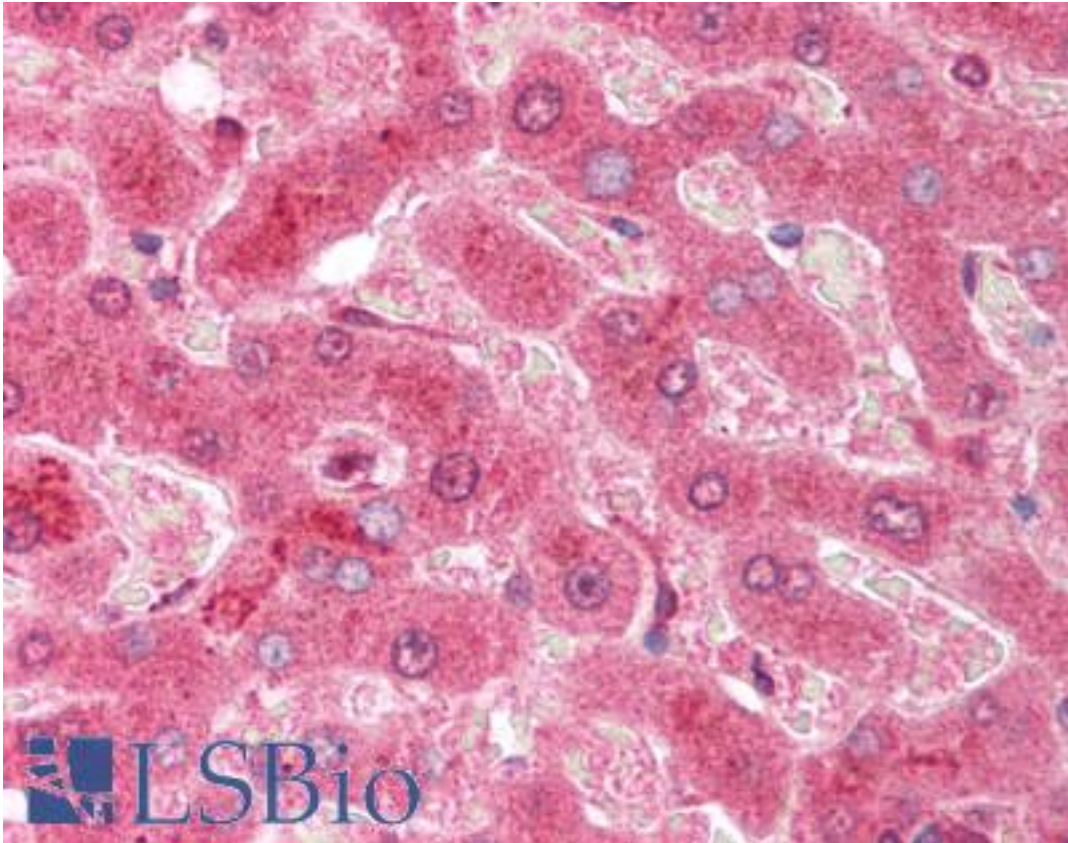


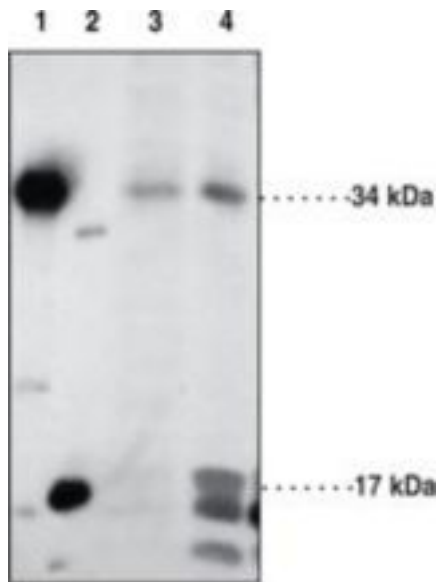
CASP3 / Caspase 3 Rabbit anti-Human Polyclonal (aa166-183) Antibody - LS-B1501 - LSBio	
<b>CatalogID:</b>	LS-B1501
<b>Validation:</b>	This antibody replaces catalog number LS-C11704. It has been validated for use in the following assays: IHC.
<b>Target:</b>	caspase 3, apoptosis-related cysteine peptidase (CASP3)
<b>Synonyms:</b>	CASP3 Antibody, Apopain Antibody, CASP-3 Antibody, Caspase-3 Antibody, CPP32B Antibody, CPP32 Antibody, Cysteine protease CPP32 Antibody, SCA-1 Antibody, SREBP cleavage activity 1 Antibody, Yama Antibody, Procaspase3 Antibody, Caspase 3 Antibody, CPP-32 Antibody, PARP cleavage protease Antibody, Protein Yama Antibody
<b>Family / Subfamily:</b>	Protease / Cysteine C14
<b>Host</b>	CASP3 antibody was produced in Rabbit
<b>Clonality:</b>	Polyclonal
<b>Isotype:</b>	IgG
<b>Immunogen Species:</b>	CASP3 / Caspase 3 antibody was raised against Human
<b>Immunogen:</b>	CASP3 / Caspase 3 antibody was raised against human caspase-3 amino acids 166-183 (TELDSGIETDSGVDDDMA). Percent identity by BLAST analysis: Human, Chimpanzee, Gorilla, Gibbon, Marmoset, Rabbit (94%); Monkey, Rat, Hamster, Horse (89%); Bovine, Bat, Dog, Panda, Pig (83%).
<b>Specificity:</b>	Human caspase-3 amino acids 166-183 (TELDSGIETDSGVDDDMA)1
<b>Epitope:</b>	aa166-183
<b>Reactivity:</b>	Human
<b>Predicted Reactivity:</b>	Chimpanzee, Gorilla, Gibbon, Monkey, Rabbit
<b>Purification:</b>	Immunoaffinity purified
<b>Presentation:</b>	TBS, pH 7.4, 50% glycerol, 0.5 mg/ml BSA, 0.02% sodium azide.
<b>Recommended Storage:</b>	Long term: -20°C; Short term: +4°C. Avoid repeat freeze-thaw cycles.
<b>Usage Summary:</b>	Immunohistochemistry: LS-B1501 was validated for use in immunohistochemistry on a panel of 21 formalin-fixed, paraffin-embedded (FFPE) human tissues after heat induced antigen retrieval in pH 6.0 citrate buffer. After incubation with the primary antibody, slides were incubated with biotinylated secondary antibody, followed by alkaline phosphatase-streptavidin and chromogen. The stained slides were evaluated by a pathologist to confirm staining specificity. The optimal working concentration for LS-B1501 was determined to be 10 ug/ml.
<b>Uses:</b>	IHC - Paraffin (10 µg/ml), Western blot (Optimal dilution to be determined by the researcher)
<b>Size:</b>	50 µg
<b>Concentration:</b>	0.2 mg/ml

**Immunohistochemistry Image:**



Anti-Caspase 3 antibody IHC of human liver. Immunohistochemistry of formalin-fixed, paraffin-embedded tissue after heat-induced antigen retrieval. Antibody LS-B1501 concentration 10 ug/ml.

**Western Blot Image:**



Lane 1: Recombinant human  
pro-caspase-3 (5 ng)  
Lane 2: Recombinant human  
caspase-3 (active) (5 ng)  
Lane 3: HeLa lysate (75 µg)  
Lane 4: Jurkat lysate (75 µg)

Western blot of Caspase 3 antibody LS-B1501.

**Requested From:**

Japan

Laboratory Reagent For In Vitro Research Use Only

Not for resale without prior written consent from LifeSpan BioSciences, Inc.

Created on 9/23/2014

© 2014 LifeSpan BioSciences