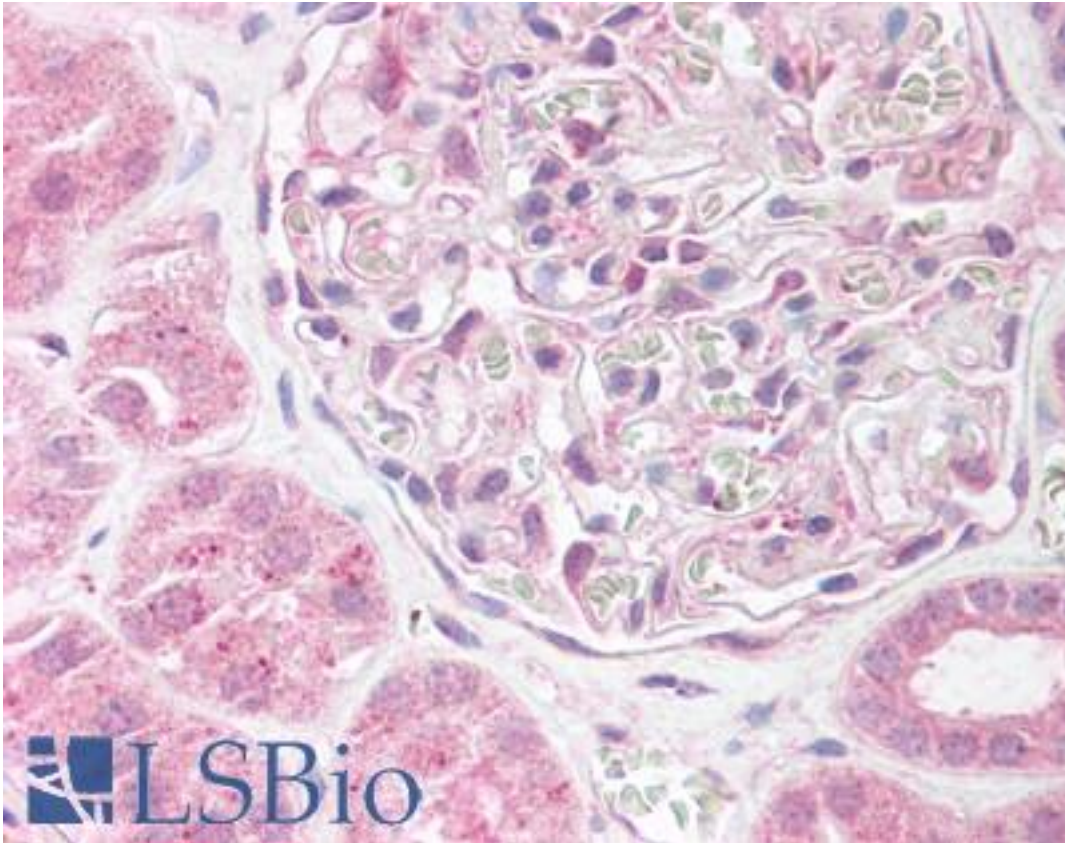


| LPAR1 / LPA1 / EDG2 Rabbit anti-Human Polyclonal (aa342-359) Antibody - LS-B1498 - LSBio | |
|--|--|
| CatalogID: | LS-B1498 |
| Validation: | This antibody replaces catalog number LS-C11169. It has been validated for use in the following assays: IHC. |
| Target: | lysophosphatidic acid receptor 1 (LPAR1) |
| Synonyms: | LPAR1 Antibody, EDG-2 Antibody, EDG2 Antibody, Gpcr26 Antibody, Rec.1.3 Antibody, Vzq-1 Antibody, Ventricular zone gene 1 Antibody, LPA receptor 1 Antibody, LPA-1 Antibody, LPA1 Antibody, Mrec1.3 Antibody, VZG1 Antibody |
| Family / Subfamily: | GPCR / Lysophospholipid/Lysosphingolipid |
| Host | LPAR1 antibody was produced in Rabbit |
| Clonality: | Polyclonal |
| Isotype: | IgG |
| Immunogen Species: | LPAR1 / LPA1 / EDG2 antibody was raised against Human |
| Immunogen: | LPAR1 / LPA1 / EDG2 antibody was raised against human lysophosphatidic acid 1 (LPA1) amino acids 342-359 (DRSASSLNHTILAGVHSN). Percent identity by BLAST analysis: Human, Gorilla, Gibbon, Monkey, Marmoset, Mouse, Rat, Sheep, Hamster, Panda, Dog, Bat, Bovine, Horse, Pig, Opossum, Chicken, Platypus, Xenopus (100%); Elephant, Rabbit (94%). |
| Specificity: | human lysophosphatidic acid 1 (LPA1) amino acids 342-359 (DRSASSLNHTILAGVHSN) |
| Epitope: | aa342-359 |
| Reactivity: | Human, Gorilla, Gibbon, Monkey, Mouse, Rat, Bat, Bovine, Dog, Hamster, Horse, Pig, Sheep, Chicken, Xenopus |
| Predicted Reactivity: | Rabbit |
| Purification: | Immunoaffinity purified |
| Reconstitution: | 500 ul sterile water |
| Presentation: | Lyophilized from 1X TBS. |
| Recommended Storage: | Long term: -20°C; Short term: +4°C. Avoid repeat freeze-thaw cycles. |
| Usage Summary: | Immunohistochemistry: LS-B1498 was validated for use in immunohistochemistry on a panel of 21 formalin-fixed, paraffin-embedded (FFPE) human tissues after heat induced antigen retrieval in pH 6.0 citrate buffer. After incubation with the primary antibody, slides were incubated with biotinylated secondary antibody, followed by alkaline phosphatase-streptavidin and chromogen. The stained slides were evaluated by a pathologist to confirm staining specificity. The optimal working concentration for LS-B1498 was determined to be 10 ug/ml. |
| Uses: | IHC - Paraffin (10 µg/ml), ICC, Western blot (Optimal dilution to be determined by the researcher) |
| Size: | 1 ea |

Immunohistochemistry Image:



Anti-EDG2 antibody IHC of human kidney. Immunohistochemistry of formalin-fixed, paraffin-embedded tissue after heat-induced antigen retrieval. Antibody LS-B1498 concentration 10 ug/ml.

Requested From:

Japan

Laboratory Reagent For In Vitro Research Use Only

Not for resale without prior written consent from LifeSpan BioSciences, Inc.

Created on 9/23/2014

© 2014 LifeSpan BioSciences