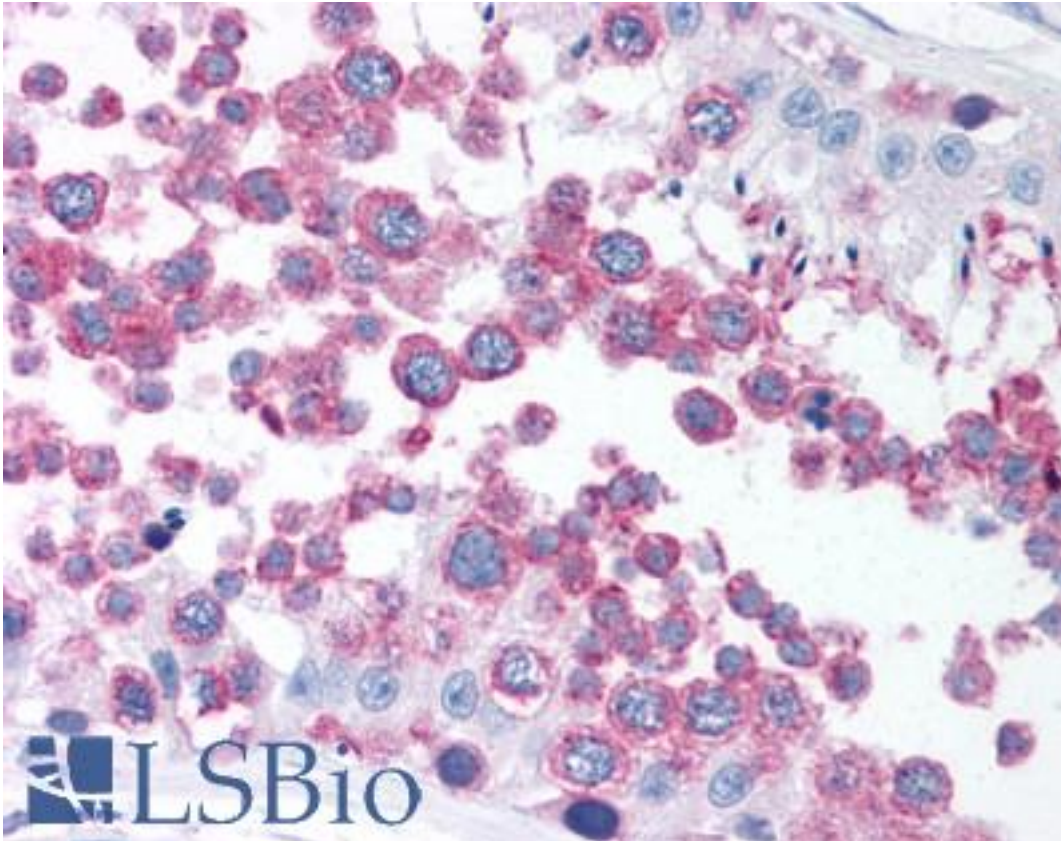


**TUBG1 / Tubulin Gamma 1 Rabbit anti-Human Polyclonal Antibody - LS-B1496 - LSBio**

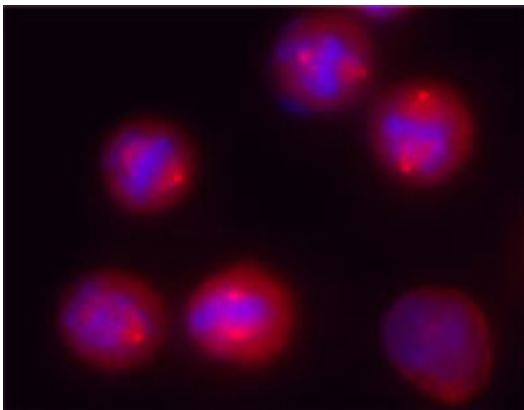
<b>CatalogID:</b>	LS-B1496
<b>Validation:</b>	This antibody replaces catalog number LS-C41288. It has been validated for use in the following assays: IHC.
<b>Target:</b>	tubulin, gamma 1 (TUBG1)
<b>Synonyms:</b>	TUBG1 Antibody, Gamma-1-tubulin Antibody, GCP-1 Antibody, Gamma Tubulin Antibody, TUBGCP1 Antibody, Tubulin gamma chain Antibody, TUBG Antibody, Tubulin, gamma polypeptide Antibody, Tubulin gamma-1 chain Antibody, Tubulin, gamma 1 Antibody
<b>Host</b>	TUBG1 antibody was produced in Rabbit
<b>Clonality:</b>	Polyclonal
<b>Isotype:</b>	IgG
<b>Immunogen Species:</b>	TUBG1 / Tubulin Gamma 1 antibody was raised against Human
<b>Antigen Type:</b>	Synthetic peptide
<b>Immunogen:</b>	TUBG1 / Tubulin Gamma 1 antibody was raised against synthetic peptide from human TUBG1 / Gamma Tubulin.
<b>Specificity:</b>	Peptide-KLH
<b>Reactivity:</b>	Human
<b>Purification:</b>	Immunoaffinity purified
<b>Presentation:</b>	Phosphate-buffered solution, pH 7.2, 0.09% sodium azide, 50% glycerol.
<b>Recommended Storage:</b>	+4°C or -20°C, Avoid repeated freezing and thawing.
<b>Usage Summary:</b>	Immunohistochemistry: LS-B1496 was validated for use in immunohistochemistry on a panel of 21 formalin-fixed, paraffin-embedded (FFPE) human tissues after heat induced antigen retrieval in pH 6.0 citrate buffer. After incubation with the primary antibody, slides were incubated with biotinylated secondary antibody, followed by alkaline phosphatase-streptavidin and chromogen. The stained slides were evaluated by a pathologist to confirm staining specificity. The optimal working concentration for LS-B1496 was determined to be 1:50.
<b>Uses:</b>	IHC - Paraffin (1:50), Immunofluorescence, Western blot (Optimal dilution to be determined by the researcher)
<b>Size:</b>	200 µl
<b>Concentration:</b>	0.2 mg/ml

**Immunohistochemistry Image:**



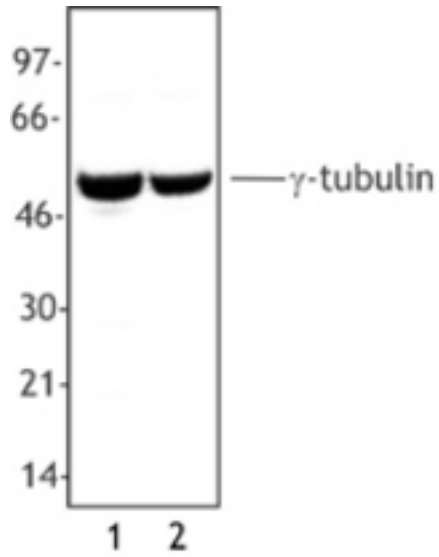
Anti-TUBG1 / Gamma Tubulin antibody IHC of human testis. Immunohistochemistry of formalin-fixed, paraffin-embedded tissue after heat-induced antigen retrieval. Antibody LS-B1496 dilution 1:50.

**Immunocytochemistry Image:**



Overnight nocodazole treated HeLa cells stained with purified rabbit polyclonal antibody against  $\gamma$ -tubulin, followed by Rhodamine Red-X conjugated goat anti-rabbit IgG and DAPI.

**Western Blot Image:**



Whole cell extract from A431 cells (Lane 1) and NIH3T3 cells (Lane 2) were resolved by electrophoresis, transferred to nitrocellulose and probed with rabbit anti-tubulin antibody. Proteins were visualized using a donkey anti-rabbit secondary conjugated to HRP and a chemiluminescence detection system.

**Requested From:**

Japan

Laboratory Reagent For In Vitro Research Use Only

Not for resale without prior written consent from LifeSpan BioSciences, Inc.

Created on 9/23/2014

© 2014 LifeSpan BioSciences