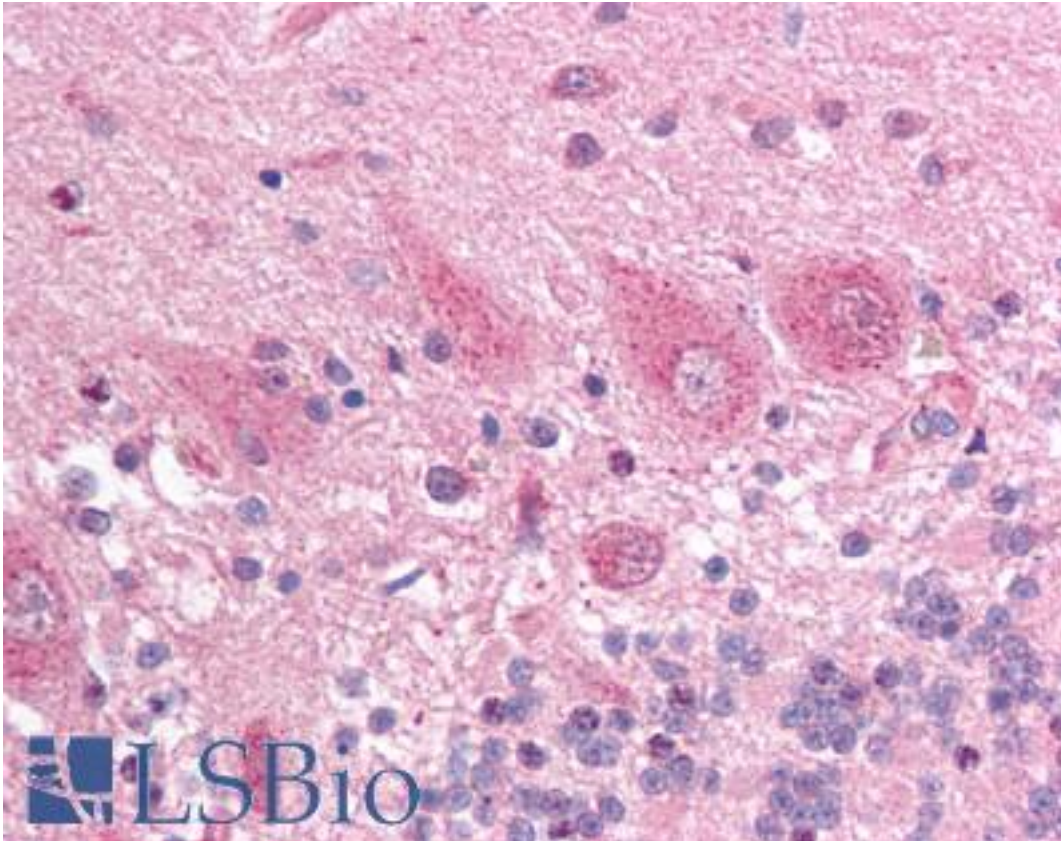


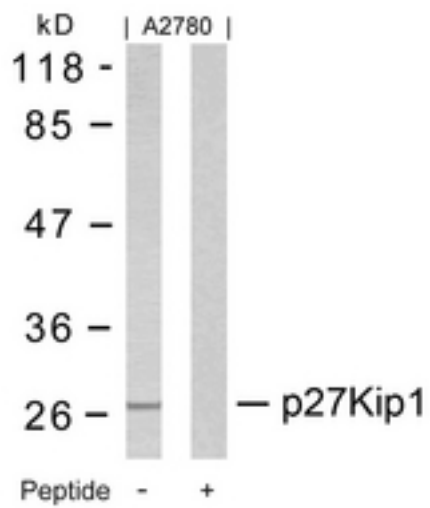
CDKN1B / p27 Kip1 Rabbit anti-Human Polyclonal (Ser10) Antibody - LS-B1465 - LSBio	
CatalogID:	LS-B1465
Validation:	This antibody replaces catalog number LS-C34369. It has been validated for use in the following assays: IHC.
Target:	cyclin-dependent kinase inhibitor 1B (p27, Kip1) (CDKN1B)
Synonyms:	CDKN1B Antibody, KIP1 Antibody, MEN1B Antibody, P27 Kip1 Antibody, p27KIP1 Antibody, MEN4 Antibody, CDKN4 Antibody
Host	CDKN1B antibody was produced in Rabbit
Clonality:	Polyclonal
Isotype:	IgG
Immunogen Species:	CDKN1B / p27 Kip1 antibody was raised against Human
Antigen Type:	Synthetic peptide
Immunogen:	CDKN1B / p27 Kip1 antibody was raised against synthetic peptide from human CDKN1B / p27 Kip1.
Specificity:	Amino acids surrounding Ser 10 of human CDKN1B
Epitope:	Ser10
Reactivity:	Human, Mouse, Rat
Purification:	Immunoaffinity purified
Presentation:	PBS, 0.02% sodium azide, 50% glycerol.
Recommended Storage:	Long term: -70°C; Short term: -20°C
Usage Summary:	Immunohistochemistry: LS-B1465 was validated for use in immunohistochemistry on a panel of 21 formalin-fixed, paraffin-embedded (FFPE) human tissues after heat induced antigen retrieval in pH 6.0 citrate buffer. After incubation with the primary antibody, slides were incubated with biotinylated secondary antibody, followed by alkaline phosphatase-streptavidin and chromogen. The stained slides were evaluated by a pathologist to confirm staining specificity. The optimal working concentration for LS-B1465 was determined to be 1:500-1:1000.
Uses:	IHC - Paraffin (1:500 - 1:1000), Western blot (Optimal dilution to be determined by the researcher)
Size:	50 µg

Immunohistochemistry Image:



Anti-CDKN1B / p27 Kip1 antibody IHC of human brain, cerebellum. Immunohistochemistry of formalin-fixed, paraffin-embedded tissue after heat-induced antigen retrieval. Antibody LS-B1465 dilution 1:500.

Western Blot Image:



Western blot of extracts from A2780 cells using p27Kip1(Ab-10)

Requested From:

Japan

Laboratory Reagent For In Vitro Research Use Only

Not for resale without prior written consent from LifeSpan BioSciences, Inc.

Created on 9/23/2014

© 2014 LifeSpan BioSciences