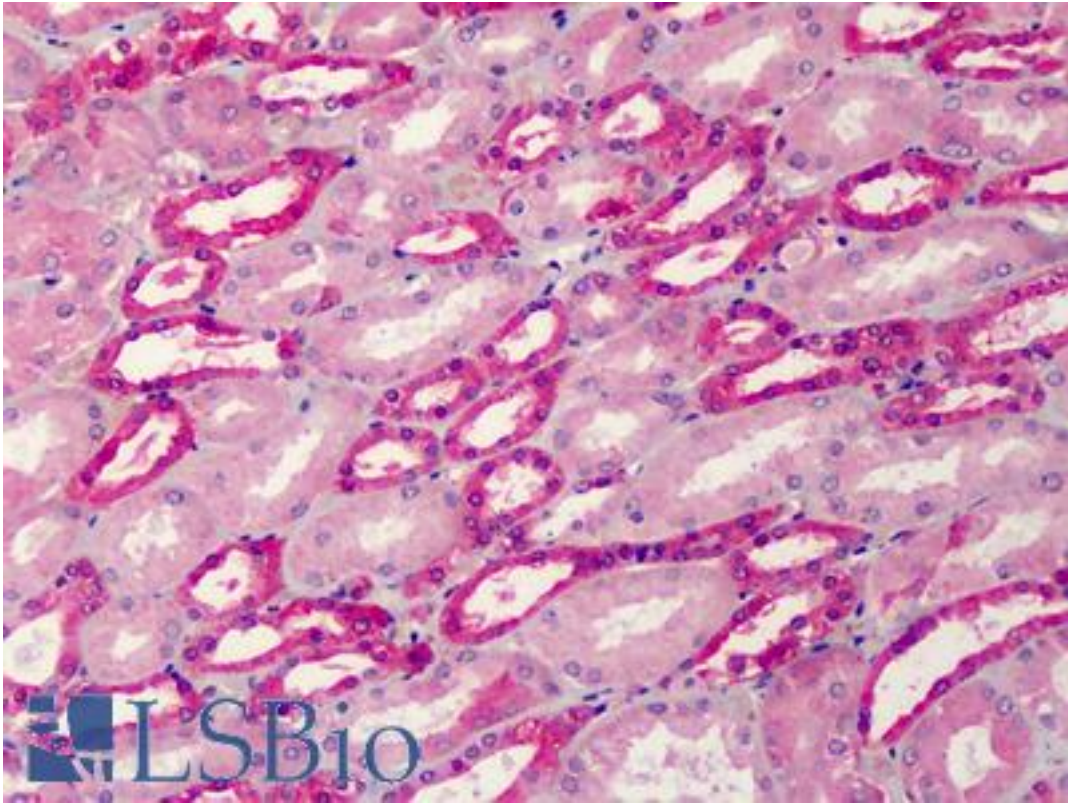


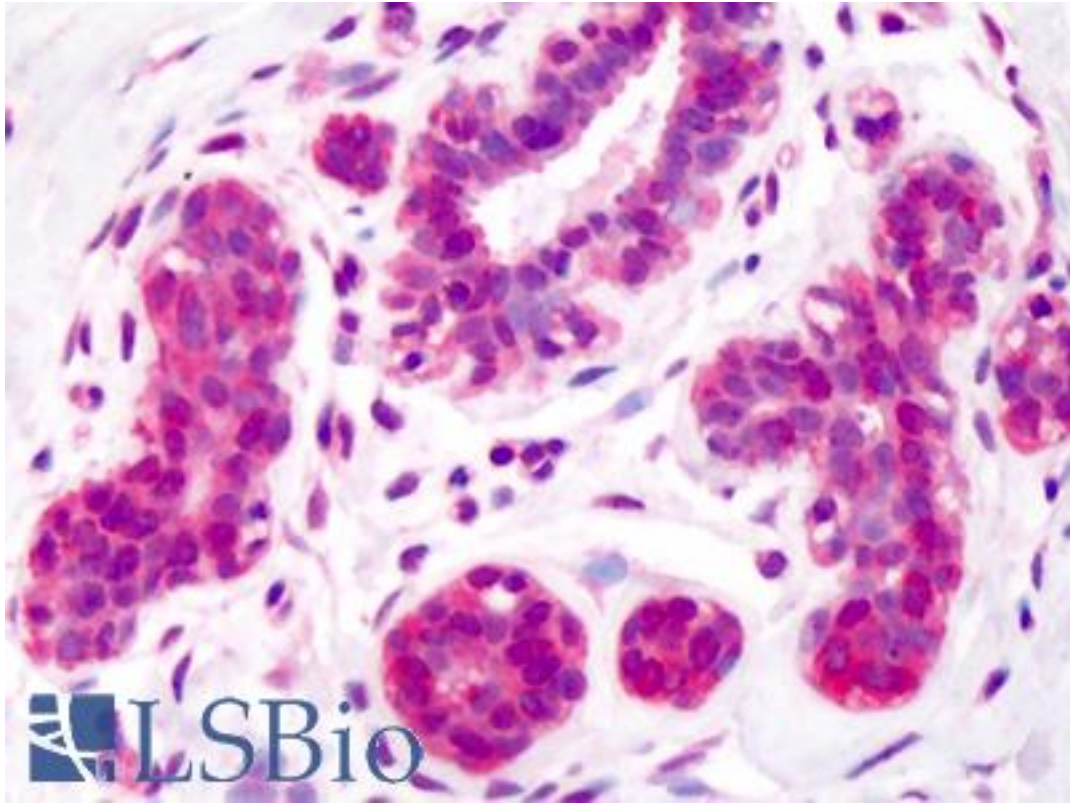
ALDOA / Aldolase Goat anti-Rabbit Polyclonal Antibody - LS-B1461 - LSBio	
CatalogID:	LS-B1461
Validation:	This antibody replaces catalog number LS-C19090. It has been validated for use in the following assays: IHC.
Target:	aldolase A, fructose-bisphosphate (ALDOA)
Synonyms:	ALDOA Antibody, ALDA Antibody, Aldolase Antibody, GSD12 Antibody, Muscle-type aldolase Antibody, Lung cancer antigen NY-LU-1 Antibody
Host	ALDOA antibody was produced in Goat
Clonality:	Polyclonal
Immunogen Species:	ALDOA / Aldolase antibody was raised against Rabbit
Antigen Type:	Purified protein
Immunogen:	ALDOA / Aldolase antibody was raised against purified aldolase from rabbit muscle
Specificity:	Aldolase [Rabbit Muscle].
Reactivity:	Rabbit, Human
Purification:	Ion exchange chromatography
Presentation:	0.02M PBS, pH 7.2, 0.01% sodium azide
Recommended Storage:	+4°C or -20°C, Avoid repeated freezing and thawing.
Usage Summary:	Immunohistochemistry: LS-B1461 was validated for use in immunohistochemistry on a panel of 21 formalin-fixed, paraffin-embedded (FFPE) human tissues after heat induced antigen retrieval in pH 6.0 citrate buffer. After incubation with the primary antibody, slides were incubated with biotinylated secondary antibody, followed by alkaline phosphatase-streptavidin and chromogen. The stained slides were evaluated by a pathologist to confirm staining specificity. The optimal working concentration for LS-B1461 was determined to be 5 ug/ml.
Uses:	IHC - Paraffin (5 µg/ml), Immunofluorescence, Western blot (1:1000), Immunoprecipitation, ELISA (Optimal dilution to be determined by the researcher)
Size:	500 µg
Concentration:	10 mg/ml

Immunohistochemistry Image:



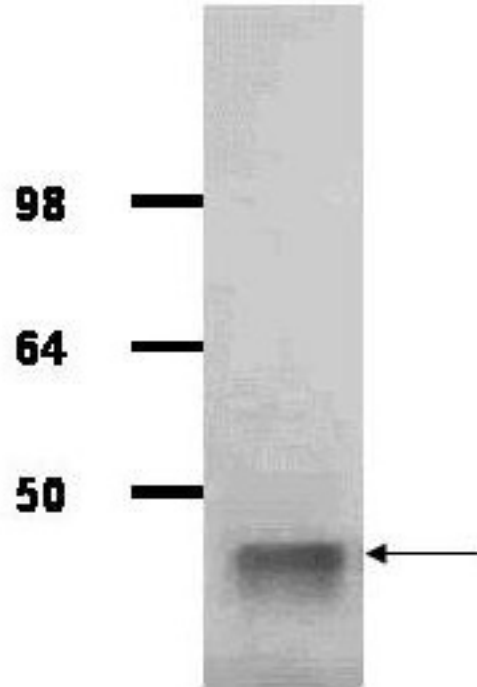
Anti-Aldolase antibody IHC of human kidney. Immunohistochemistry of formalin-fixed, paraffin-embedded tissue after heat-induced antigen retrieval. Antibody LS-B1461 concentration 5 ug/ml.

Immunohistochemistry Image:



Anti-Aldolase antibody IHC of human breast. Immunohistochemistry of formalin-fixed, paraffin-embedded tissue after heat-induced antigen retrieval. Antibody LS-B1461 concentration 5 ug/ml.

Western Blot Image:



Anti-Aldolase Antibody - Western Blot. IgG purified antibody to rabbit muscle aldolase was used at a 1:1000 dilution to detect human aldolase by Western blot. A whole cell lysate prepared from human derived A293 cells was loaded on a 4-12% Tris glycine gradient gel for SDS-PAGE. The gel was transferred to nitro-cellulose using standard techniques. Antibody reaction with the membrane occurred overnight at 4° C in TTBS supplemented with 2% non-fat dry milk. Color was allowed to develop using SuperSignal West Pico Chemiluminescent Substrate (PIERCE). Other detection methods will yield similar results. This antibody clearly detects a band at ~41 kD consistent with human aldolase.

Western Blot Image:



Anti-Aldolase (Rabbit Muscle) was used at a 1:1000 dilution to detect human aldolase by Western blot. This antibody clearly detects a band at ~41 kDa consistent with human aldolase.

Requested From:

Japan

Laboratory Reagent For In Vitro Research Use Only

Not for resale without prior written consent from LifeSpan BioSciences, Inc.

Created on 9/23/2014

© 2014 LifeSpan BioSciences