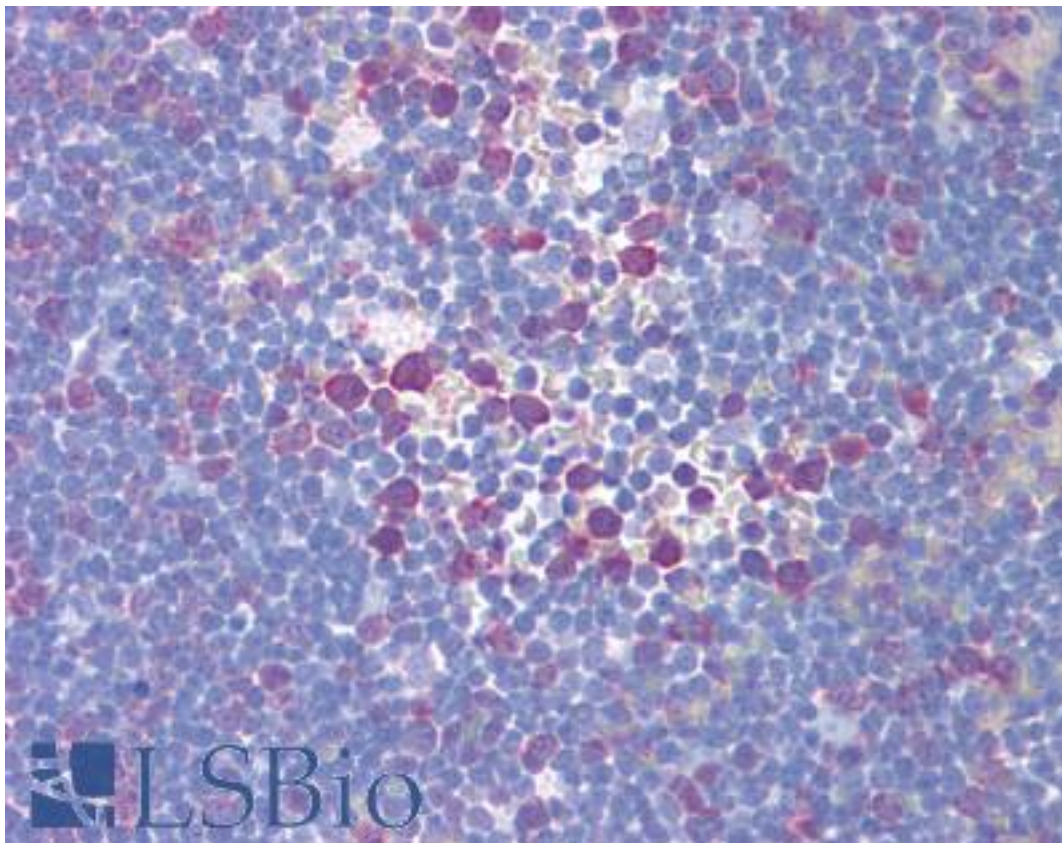


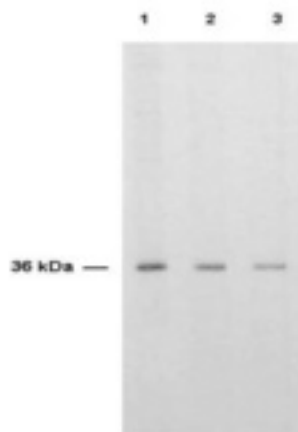
TYMS/TS/Thymidylate Synthase Sheep anti-Human Polyclonal Antibody - LS-B1460 - LSBio	
<b>CatalogID:</b>	LS-B1460
<b>Validation:</b>	This antibody replaces catalog number LS-C19029. It has been validated for use in the following assays: IHC.
<b>Target:</b>	thymidylate synthetase (TYMS)
<b>Synonyms:</b>	TYMS Antibody, HST422 Antibody, Thymidylate synthetase Antibody, TMS Antibody, TS Antibody, Thymidylate synthase Antibody, Tsase Antibody
<b>Host</b>	TYMS antibody was produced in Sheep
<b>Clonality:</b>	Polyclonal
<b>Immunogen Species:</b>	TYMS/TS/Thymidylate Synthase antibody was raised against Human
<b>Immunogen:</b>	TYMS/TS/Thymidylate Synthase antibody was raised against recombinant human TYMS.
<b>Specificity:</b>	Recombinant human Thymidylate Synthase (36 kD) produced in E. coli.
<b>Reactivity:</b>	Human
<b>Purification:</b>	Purified IgG
<b>Presentation:</b>	0.02 M Potassium Phosphate, 0.15 M Sodium Chloride, pH 7.2 with 0.01% (w/v) Sodium Azide
<b>Recommended Storage:</b>	+4°C or -20°C, Avoid repeated freezing and thawing.
<b>Usage Summary:</b>	Immunohistochemistry: LS-B1460 was validated for use in immunohistochemistry on a panel of 21 formalin-fixed, paraffin-embedded (FFPE) human tissues after heat induced antigen retrieval in pH 6.0 citrate buffer. After incubation with the primary antibody, slides were incubated with biotinylated secondary antibody, followed by alkaline phosphatase-streptavidin and chromogen. The stained slides were evaluated by a pathologist to confirm staining specificity. The optimal working concentration for LS-B1460 was determined to be 5 ug/ml.
<b>Uses:</b>	IHC - Paraffin (5 µg/ml), Immunofluorescence, Western blot, Immunoprecipitation, ELISA (Optimal dilution to be determined by the researcher)
<b>Size:</b>	50 µl
<b>Concentration:</b>	10 mg/ml

**Immunohistochemistry Image:**



Anti-TYMS antibody IHC of human thymus. Immunohistochemistry of formalin-fixed, paraffin-embedded tissue after heat-induced antigen retrieval. Antibody LS-B1460 concentration 5 ug/ml.

**Western Blot Image:**



Anti-Thymidylate Synthase Antibody - Western Blot. Anti-TS is shown to detect thymidylate synthase present in a HeLa cell extract. Each lane is estimated to contain 4 ug of protein. Lanes 1, 2 and 3 represent 1:2000, 1:5000 and 1:10000 fold dilutions of the antibody. Detection was made using HRP Rabbit-a-Sheep IgG (LS-C61113) diluted 1:1000 and color development using TMB (TMBM-100) substrate for approximately 4.

**Requested From:**

Japan

Laboratory Reagent For In Vitro Research Use Only

Not for resale without prior written consent from LifeSpan BioSciences, Inc.

Created on 9/23/2014

© 2014 LifeSpan BioSciences