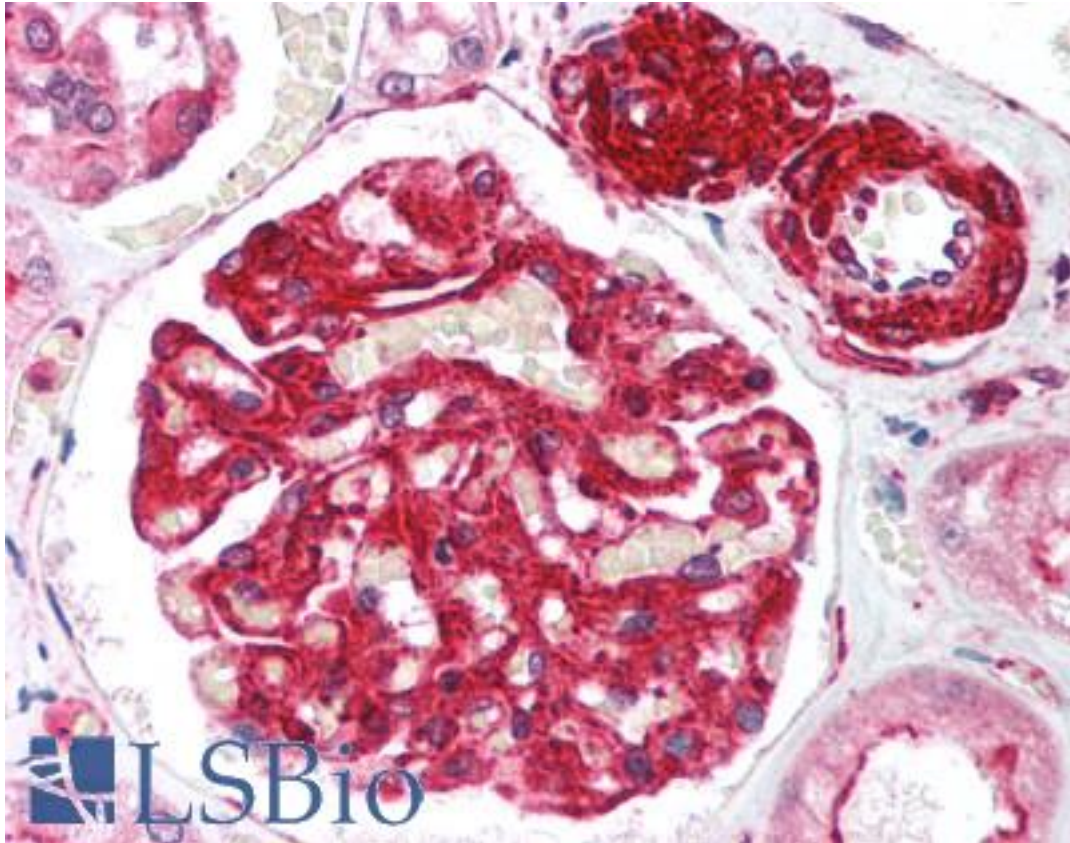


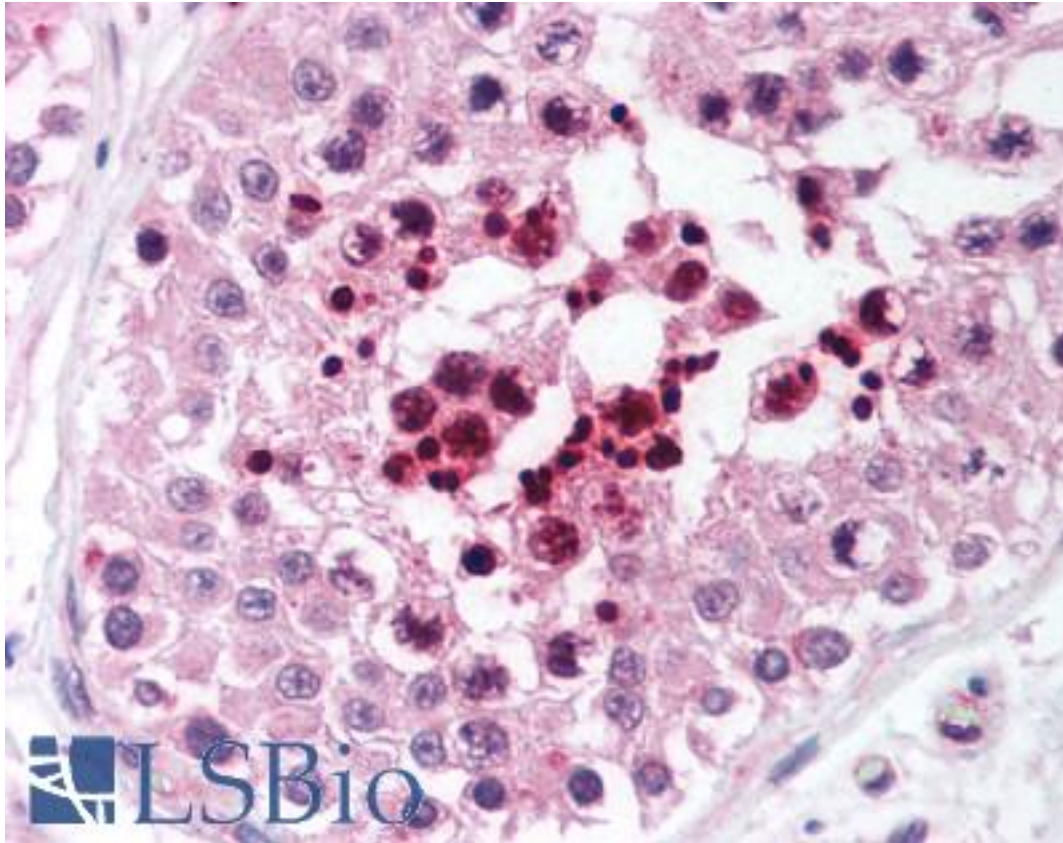
RIF1 Rabbit anti-Mouse Polyclonal (aa2406-2419) Antibody - LS-B1455 - LSBio	
CatalogID:	LS-B1455
Validation:	This antibody replaces catalog number LS-C18976. It has been validated for use in the following assays: IHC.
Target:	RAP1 interacting factor homolog (yeast) (RIF1)
Synonyms:	RIF1 Antibody
Host	RIF1 antibody was produced in Rabbit
Clonality:	Polyclonal
Immunogen Species:	RIF1 antibody was raised against Mouse
Antigen Type:	Synthetic peptide
Immunogen:	RIF1 antibody was raised against synthetic peptide from mouse RIF1.
Specificity:	Amino acids 2406-2419 of Mouse Rif1.
Epitope:	aa2406-2419
Reactivity:	Mouse, Human
Purification:	Immunoaffinity purified
Presentation:	0.02 M potassium phosphate, 0.15 M sodium chloride, pH 7.2, 0.01% sodium azide.
Recommended Storage:	Store vial at -20 C prior to opening. Dilute only prior to immediate use. For extended storage aliquot contents and freeze at -20 C or below. Avoid cycles of freezing and thawing.
Usage Summary:	Immunohistochemistry: LS-B1455 was validated for use in immunohistochemistry on a panel of 21 formalin-fixed, paraffin-embedded (FFPE) human tissues after heat induced antigen retrieval in pH 6.0 citrate buffer. After incubation with the primary antibody, slides were incubated with biotinylated secondary antibody, followed by alkaline phosphatase-streptavidin and chromogen. The stained slides were evaluated by a pathologist to confirm staining specificity. The optimal working concentration for LS-B1455 was determined to be 5 ug/ml.
Uses:	IHC - Paraffin (5 µg/ml), Western blot (1:500 - 1:3000), ELISA (1:5000 - 1:40000) (Optimal dilution to be determined by the researcher)
Size:	50 µg
Concentration:	1 mg/ml

Immunohistochemistry Image:



Anti-RIF1 antibody IHC of human kidney. Immunohistochemistry of formalin-fixed, paraffin-embedded tissue after heat-induced antigen retrieval. Antibody LS-B1455 concentration 5 ug/ml.

Immunohistochemistry Image:



Anti-RIF1 antibody IHC of human testis. Immunohistochemistry of formalin-fixed, paraffin-embedded tissue after heat-induced antigen retrieval. Antibody LS-B1455 concentration 5 ug/ml.

Western Blot Image:



Anti-Rif1 Antibody - Western Blot. Western blot of Affinity Purified anti-Rif1 antibody shows detection of a band ~265 kD corresponding to mouse Rif1 (arrowhead). Specific reactivity with this band is blocked when the antibody is pre-incubated with the immunizing peptide (data not shown). Approximately 25 ug of MEF whole cell lysate was separated by SDS-PAGE and transferred onto nitrocellulose. After blocking the membrane was probed with the primary antibody diluted to 1.0 ug/ml for 2 h at room temperature followed by washes and reaction with a 1:10000 dilution of IRDye800 conjugated Gt-a-Rabbit IgG [H&L] MX (for 45 min at room temperature. IRDye800 fluorescence image was captured using the Odyssey Infrared Imaging System developed by LI-COR. IRDye is a trademark of LI-COR, Inc. Other detection systems will yield similar results.

Requested From:

Japan

Laboratory Reagent For In Vitro Research Use Only

Not for resale without prior written consent from LifeSpan BioSciences, Inc.

Created on 9/23/2014

© 2014 LifeSpan BioSciences