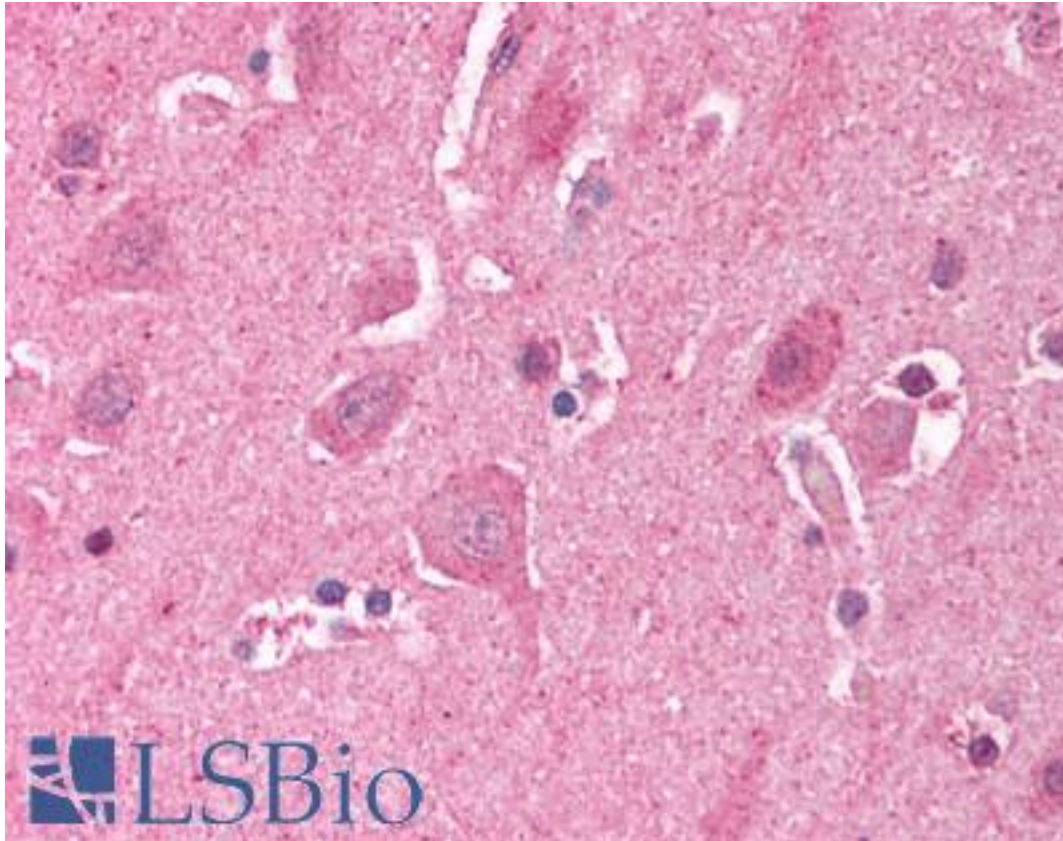


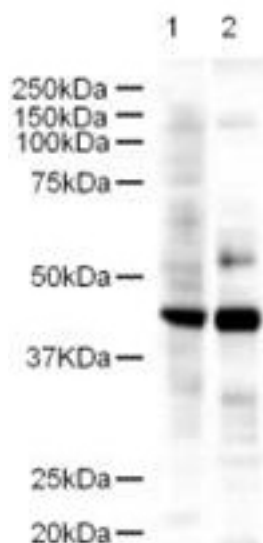
LDB2 Rabbit anti-Mouse Polyclonal (aa107-120) Antibody - LS-B1453 - LSBio	
<b>CatalogID:</b>	LS-B1453
<b>Validation:</b>	This antibody replaces catalog number LS-C18946. It has been validated for use in the following assays: IHC.
<b>Target:</b>	LIM domain binding 2 (LDB2)
<b>Synonyms:</b>	LDB2 Antibody, CLIM-1 Antibody, CLIM1 Antibody, LIM binding domain 2 Antibody, LIM domain binding 2 Antibody, LIM domain-binding protein 2 Antibody, LDB-2 Antibody, LIM domain-binding factor-2 Antibody
<b>Host</b>	LDB2 antibody was produced in Rabbit
<b>Clonality:</b>	Polyclonal
<b>Immunogen Species:</b>	LDB2 antibody was raised against Mouse
<b>Antigen Type:</b>	Synthetic peptide
<b>Immunogen:</b>	LDB2 antibody was raised against synthetic peptide from mouse LDB2.
<b>Specificity:</b>	aa 107-120 of Mouse LDB2.
<b>Epitope:</b>	aa107-120
<b>Reactivity:</b>	Mouse, Human, Chimpanzee, Rat, Dog, Chicken
<b>Purification:</b>	Immunoaffinity purified
<b>Presentation:</b>	0.02 M potassium phosphate, 0.15 M sodium chloride, pH 7.2, 0.01% sodium azide.
<b>Recommended Storage:</b>	Store vial at -20 C prior to opening. Dilute only prior to immediate use. For extended storage aliquot contents and freeze at -20 C or below. Avoid cycles of freezing and thawing.
<b>Usage Summary:</b>	Immunohistochemistry: LS-B1453 was validated for use in immunohistochemistry on a panel of 21 formalin-fixed, paraffin-embedded (FFPE) human tissues after heat induced antigen retrieval in pH 6.0 citrate buffer. After incubation with the primary antibody, slides were incubated with biotinylated secondary antibody, followed by alkaline phosphatase-streptavidin and chromogen. The stained slides were evaluated by a pathologist to confirm staining specificity. The optimal working concentration for LS-B1453 was determined to be 5 ug/ml.
<b>Uses:</b>	IHC - Paraffin (5 µg/ml), Immunofluorescence, Western blot (1:500 - 1:2000), ELISA (1:5000 - 1:20000) (Optimal dilution to be determined by the researcher)
<b>Size:</b>	50 µg
<b>Concentration:</b>	1 mg/ml

**Immunohistochemistry Image:**



Anti-LDB2 antibody IHC of human brain, cortex. Immunohistochemistry of formalin-fixed, paraffin-embedded tissue after heat-induced antigen retrieval. Antibody LS-B1453 concentration 5 ug/ml.

**Western Blot Image:**



Anti-LDB2 Antibody - Western Blot. Western blot of Affinity Purified anti-LDB2 antibody shows detection of a 43-kD band corresponding to LDB2 in a lysates prepared from human kidney (lane 1) and mouse spleen (lane 2) tissues. Approximately 18 ug of lysate was run on a SDS-PAGE and transferred onto nitrocellulose followed by reaction with a 1:500 dilution of anti-LDB2 antibody. Detection occurred using a 1:5000 dilution of HRP-labeled Goat anti-Rabbit IgG for 1 hour at room temperature. A chemiluminescence system was used for signal detection (Roche) using a 1 min exposure time.

**Requested From:**

Japan

Laboratory Reagent For In Vitro Research Use Only

Not for resale without prior written consent from LifeSpan BioSciences, Inc.

Created on 9/23/2014

© 2014 LifeSpan BioSciences