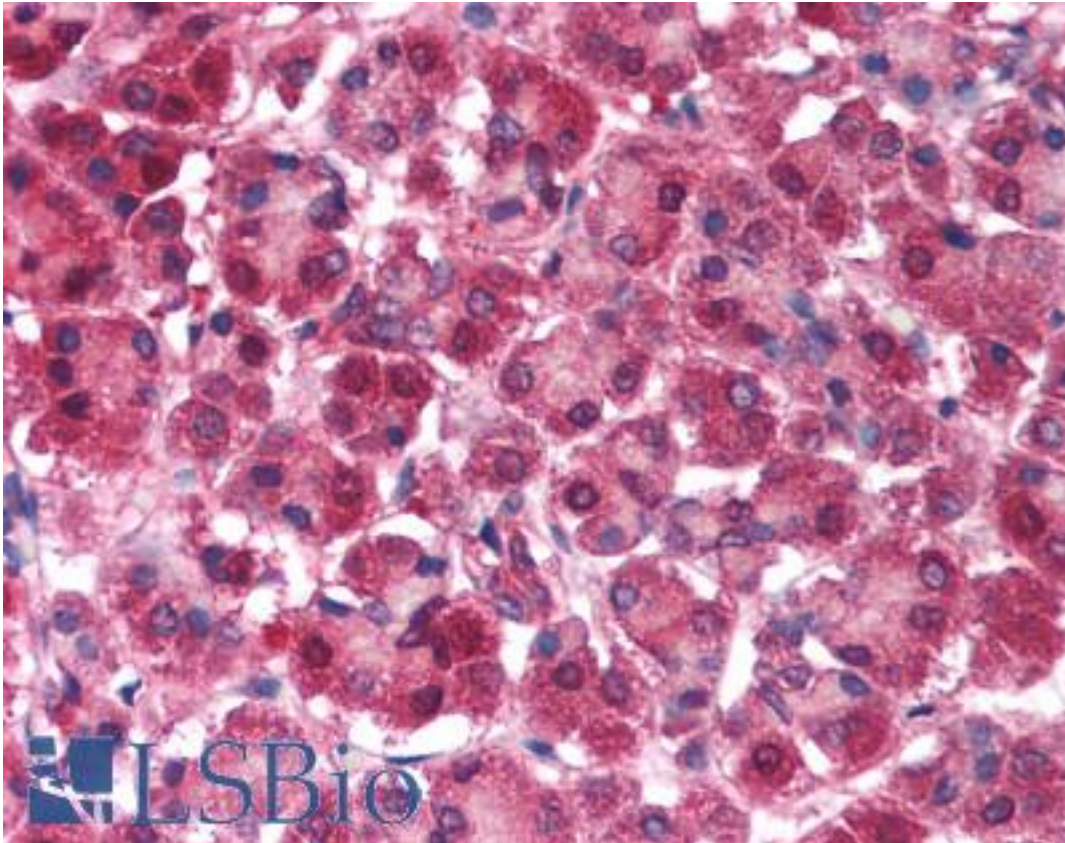


**PARK7 / DJ-1 Rabbit anti-Human Polyclonal (aa177-189) Antibody - LS-B1452 - LSBio**

<b>CatalogID:</b>	LS-B1452
<b>Validation:</b>	This antibody replaces catalog number LS-C18938. It has been validated for use in the following assays: IHC.
<b>Target:</b>	parkinson protein 7 (PARK7)
<b>Synonyms:</b>	PARK7 Antibody, DJ-1 Antibody, DJ1 Antibody, Parkinson disease protein 7 Antibody, Park-7 Antibody, Oncogene DJ1 Antibody, Parkinson protein 7 Antibody, Protein DJ-1 Antibody
<b>Host</b>	PARK7 antibody was produced in Rabbit
<b>Clonality:</b>	Polyclonal
<b>Immunogen Species:</b>	PARK7 / DJ-1 antibody was raised against Human
<b>Antigen Type:</b>	Synthetic peptide
<b>Immunogen:</b>	PARK7 / DJ-1 antibody was raised against synthetic peptide from human PARK7 / DJ-1.
<b>Specificity:</b>	aa 177-189 of Human PARK7 protein.
<b>Epitope:</b>	aa177-189
<b>Reactivity:</b>	Human, Chimpanzee, Zebrafish, African green monkey
<b>Purification:</b>	Immunoaffinity purified
<b>Presentation:</b>	0.02 M potassium phosphate, 0.15 M sodium chloride, pH 7.2, 0.01% sodium azide.
<b>Recommended Storage:</b>	Store vial at -20 C prior to opening. Dilute only prior to immediate use. For extended storage aliquot contents and freeze at -20 C or below. Avoid cycles of freezing and thawing.
<b>Usage Summary:</b>	Immunohistochemistry: LS-B1452 was validated for use in immunohistochemistry on a panel of 21 formalin-fixed, paraffin-embedded (FFPE) human tissues after heat induced antigen retrieval in pH 6.0 citrate buffer. After incubation with the primary antibody, slides were incubated with biotinylated secondary antibody, followed by alkaline phosphatase-streptavidin and chromogen. The stained slides were evaluated by a pathologist to confirm staining specificity. The optimal working concentration for LS-B1452 was determined to be 2.5 ug/ml.
<b>Uses:</b>	IHC - Paraffin (2.5 ug/ml), Western blot (1:500 - 1:2000), ELISA (1:10000 - 1:50000) (Optimal dilution to be determined by the researcher)
<b>Size:</b>	50 ug
<b>Concentration:</b>	1 mg/ml

**Immunohistochemistry Image:**



Anti-PARK7 / DJ-1 antibody IHC of human pancreas. Immunohistochemistry of formalin-fixed, paraffin-embedded tissue after heat-induced antigen retrieval. Antibody LS-B1452 concentration 5 ug/ml.

**Western Blot Image:**



Anti-Human PARK7 Antibody - Western Blot. Western blot analysis is shown using Affinity Purified anti-Human PARK7 antibody to detect PARK7 present in Jurkat whole cell lysate. This western blot shows reactivity with human PARK7 protein. Comparison to a molecular weight marker indicates a predominant band of ~28.0 kD. Peptide competition blocks specific reactivity of the antibody with PARK7 (not shown). A 16% Tris-Tricine gel was used to separate proteins prior to transfer to 0.2 micron nitrocellulose. The blot was incubated with a 1:1300 dilution of the antibody overnight at 4C followed by detection using IRDye800 labeled Goat-a-Rabbit IgG [H&L] ( diluted 1:5000 for 45 min at RT. IRDye800 fluorescence image was captured using the Odyssey Infrared Imaging System developed by LI-COR. IRDye is a trademark of LI-COR, Inc. Other detection systems will yield similar results.

**Requested From:**

Japan

Laboratory Reagent For In Vitro Research Use Only

Not for resale without prior written consent from LifeSpan BioSciences, Inc.

Created on 9/23/2014

© 2014 LifeSpan BioSciences