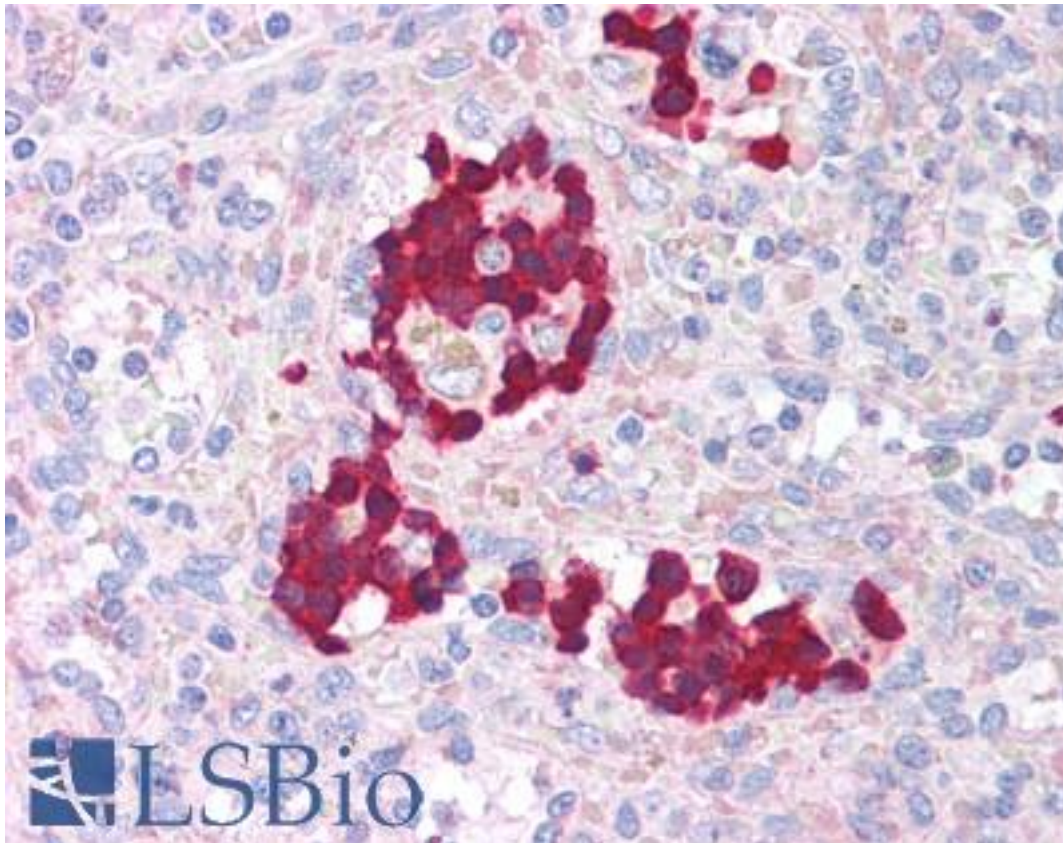


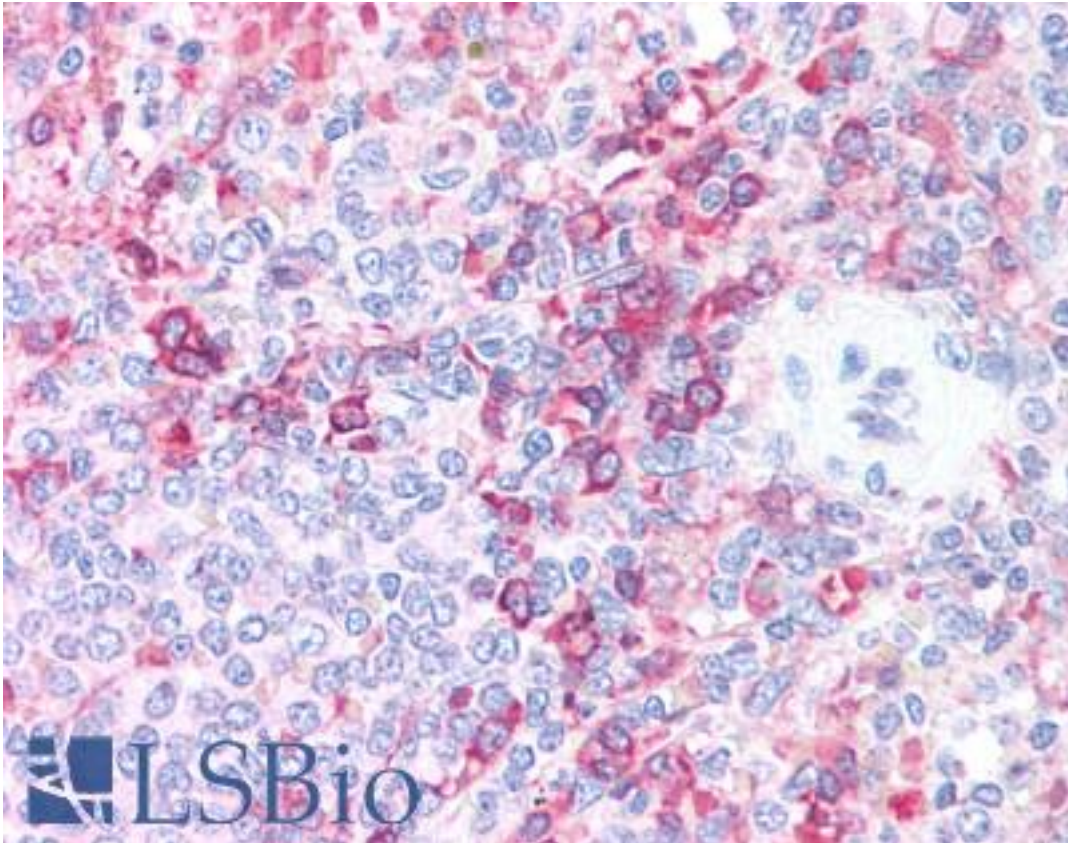
AURKB / Aurora-B Rabbit anti-Human Polyclonal (aa227-238) Antibody - LS-B1451 - LSBio	
<b>CatalogID:</b>	LS-B1451
<b>Validation:</b>	This antibody replaces catalog number LS-C18930. It has been validated for use in the following assays: IHC.
<b>Target:</b>	aurora kinase B (AURKB)
<b>Synonyms:</b>	AURKB Antibody, AIRK2 Antibody, AIK2 Antibody, Aurora kinase B Antibody, Aurora kinase B-Sv1 Antibody, Aurora-related kinase 2 Antibody, Aurora/IPL1-related kinase 2 Antibody, ARK-2 Antibody, ARK2 Antibody, Aurkb-sv1 Antibody, Aurkb-sv2 Antibody, Aurora 1 Antibody, Aurora-B Antibody, AIM-1 Antibody, IPL1 Antibody, STK-1 Antibody, STK5 Antibody, PPP1R48 Antibody, AurB Antibody, Aurora B Antibody, Aurora kinase B-Sv2 Antibody, Aurora-1 Antibody, Aurora1 Antibody, Serine/threonine kinase 12 Antibody, STK1 Antibody, STK12 Antibody
<b>Family / Subfamily:</b>	Protein Kinase / Aurora/IPL1-like
<b>Host</b>	AURKB antibody was produced in Rabbit
<b>Clonality:</b>	Polyclonal
<b>Immunogen Species:</b>	AURKB / Aurora-B antibody was raised against Human
<b>Antigen Type:</b>	Synthetic peptide
<b>Immunogen:</b>	AURKB / Aurora-B antibody was raised against synthetic peptide from human AURKB / Aurora-B.
<b>Specificity:</b>	aa 227-238 of Human Aurora Kinase B protein.
<b>Epitope:</b>	aa227-238
<b>Reactivity:</b>	Human
<b>Purification:</b>	Immunoaffinity purified
<b>Presentation:</b>	0.02 M potassium phosphate, 0.15 M sodium chloride, pH 7.2, 0.01% sodium azide.
<b>Recommended Storage:</b>	Long term: -20°C; Short term: +4°C. Avoid repeat freeze-thaw cycles.
<b>Usage Summary:</b>	Immunohistochemistry: LS-B1451 was validated for use in immunohistochemistry on a panel of 21 formalin-fixed, paraffin-embedded (FFPE) human tissues after heat induced antigen retrieval in pH 6.0 citrate buffer. After incubation with the primary antibody, slides were incubated with biotinylated secondary antibody, followed by alkaline phosphatase-streptavidin and chromogen. The stained slides were evaluated by a pathologist to confirm staining specificity. The optimal working concentration for LS-B1451 was determined to be 5 ug/ml.
<b>Uses:</b>	IHC - Paraffin (5 µg/ml), Immunofluorescence, Western blot (1:500 - 1:2000), ELISA (1:5000 - 1:20000) (Optimal dilution to be determined by the researcher)
<b>Size:</b>	50 µg
<b>Concentration:</b>	1 mg/ml

**Immunohistochemistry Image:**



Anti-AURKB / Aurora-B antibody IHC of human spleen. Immunohistochemistry of formalin-fixed, paraffin-embedded tissue after heat-induced antigen retrieval. Antibody LS-B1451 concentration 5 ug/ml.

**Immunohistochemistry Image:**



Anti-AURKB / Aurora-B antibody IHC of human spleen. Immunohistochemistry of formalin-fixed, paraffin-embedded tissue after heat-induced antigen retrieval. Antibody LS-B1451 concentration 5 ug/ml.

**Requested From:**

Japan

Laboratory Reagent For In Vitro Research Use Only

Not for resale without prior written consent from LifeSpan BioSciences, Inc.

Created on 9/23/2014

© 2014 LifeSpan BioSciences