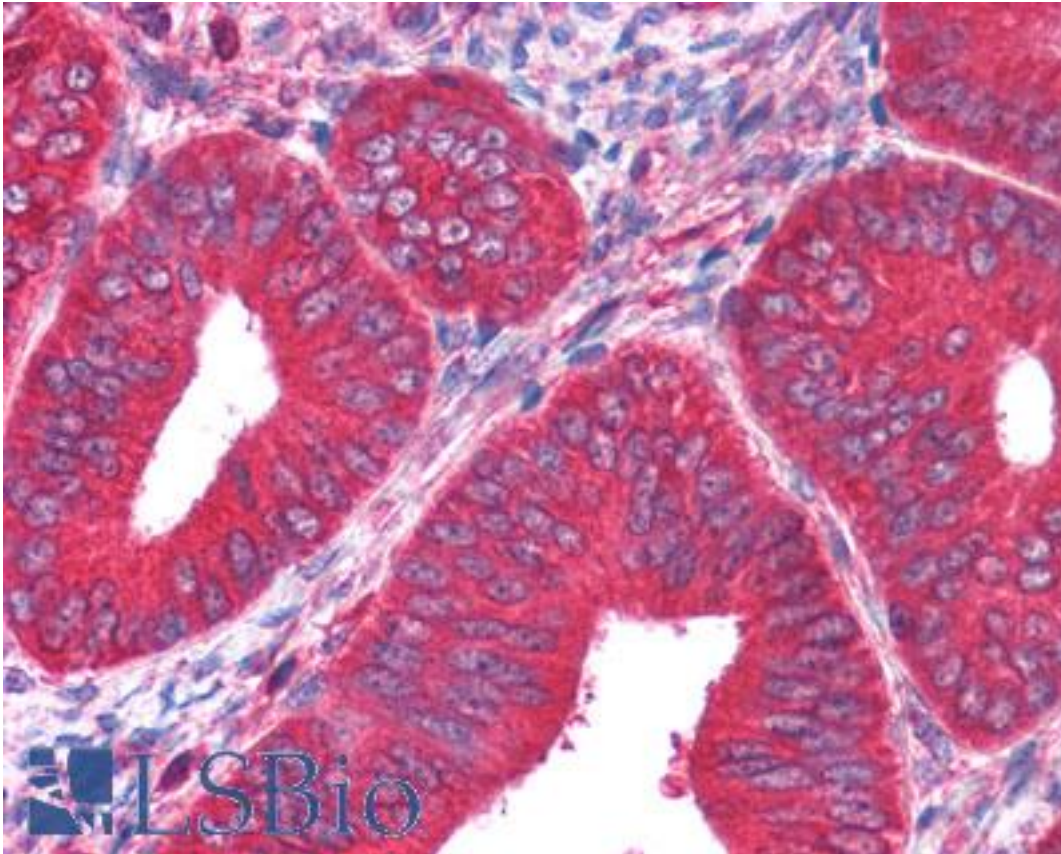


**PKM / Pyruvate Kinase Goat anti-Rabbit Polyclonal Antibody - LS-B1450 - LSBio**

<b>CatalogID:</b>	LS-B1450
<b>Validation:</b>	This antibody replaces catalog number LS-C18879. It has been validated for use in the following assays: IHC.
<b>Target:</b>	pyruvate kinase, muscle (PKM)
<b>Synonyms:</b>	PKM Antibody, p58 Antibody, PK3 Antibody, PKM2 Antibody, Pyruvate Kinase Antibody, Pyruvate kinase 2/3 Antibody, Pyruvate kinase, m1 Antibody, Pyruvate kinase, muscle Antibody, TCB Antibody, Tumor M2-PK Antibody, OIP-3 Antibody, OIP3 Antibody, Opa-interacting protein 3 Antibody, CTHBP Antibody, PK, muscle type Antibody, PK2 Antibody, Pyruvate kinase isozymes M1/M2 Antibody, Pyruvate kinase muscle isozyme Antibody, THBP1 Antibody
<b>Host</b>	PKM antibody was produced in Goat
<b>Clonality:</b>	Polyclonal
<b>Immunogen Species:</b>	PKM / Pyruvate Kinase antibody was raised against Rabbit
<b>Immunogen:</b>	PKM / Pyruvate Kinase antibody was raised against pyruvate kinase purified from rabbit muscle.
<b>Specificity:</b>	Pyruvate Kinase (Rabbit Muscle).
<b>Reactivity:</b>	Rabbit, Human
<b>Purification:</b>	Purified IgG
<b>Presentation:</b>	0.02 M Potassium Phosphate, 0.15 M Sodium Chloride, pH 7.2 with 0.01% (w/v) Sodium Azide
<b>Recommended Storage:</b>	+4°C or -20°C, Avoid repeated freezing and thawing.
<b>Usage Summary:</b>	Immunohistochemistry: LS-B1450 was validated for use in immunohistochemistry on a panel of 21 formalin-fixed, paraffin-embedded (FFPE) human tissues after heat induced antigen retrieval in pH 6.0 citrate buffer. After incubation with the primary antibody, slides were incubated with biotinylated secondary antibody, followed by alkaline phosphatase-streptavidin and chromogen. The stained slides were evaluated by a pathologist to confirm staining specificity. The optimal working concentration for LS-B1450 was determined to be 5 ug/ml.
<b>Uses:</b>	IHC - Paraffin (5 µg/ml), Western blot (1:500 - 1:2000), Immunoprecipitation, ELISA (1:4000 - 1:20000) (Optimal dilution to be determined by the researcher)
<b>Size:</b>	50 µl
<b>Concentration:</b>	10 mg/ml

**Immunohistochemistry Image:**



Anti-PKM antibody IHC of human uterus. Immunohistochemistry of formalin-fixed, paraffin-embedded tissue after heat-induced antigen retrieval. Antibody LS-B1450 concentration 5 ug/ml.

**Requested From:**

Japan

Laboratory Reagent For In Vitro Research Use Only

Not for resale without prior written consent from LifeSpan BioSciences, Inc.

Created on 9/23/2014

© 2014 LifeSpan BioSciences